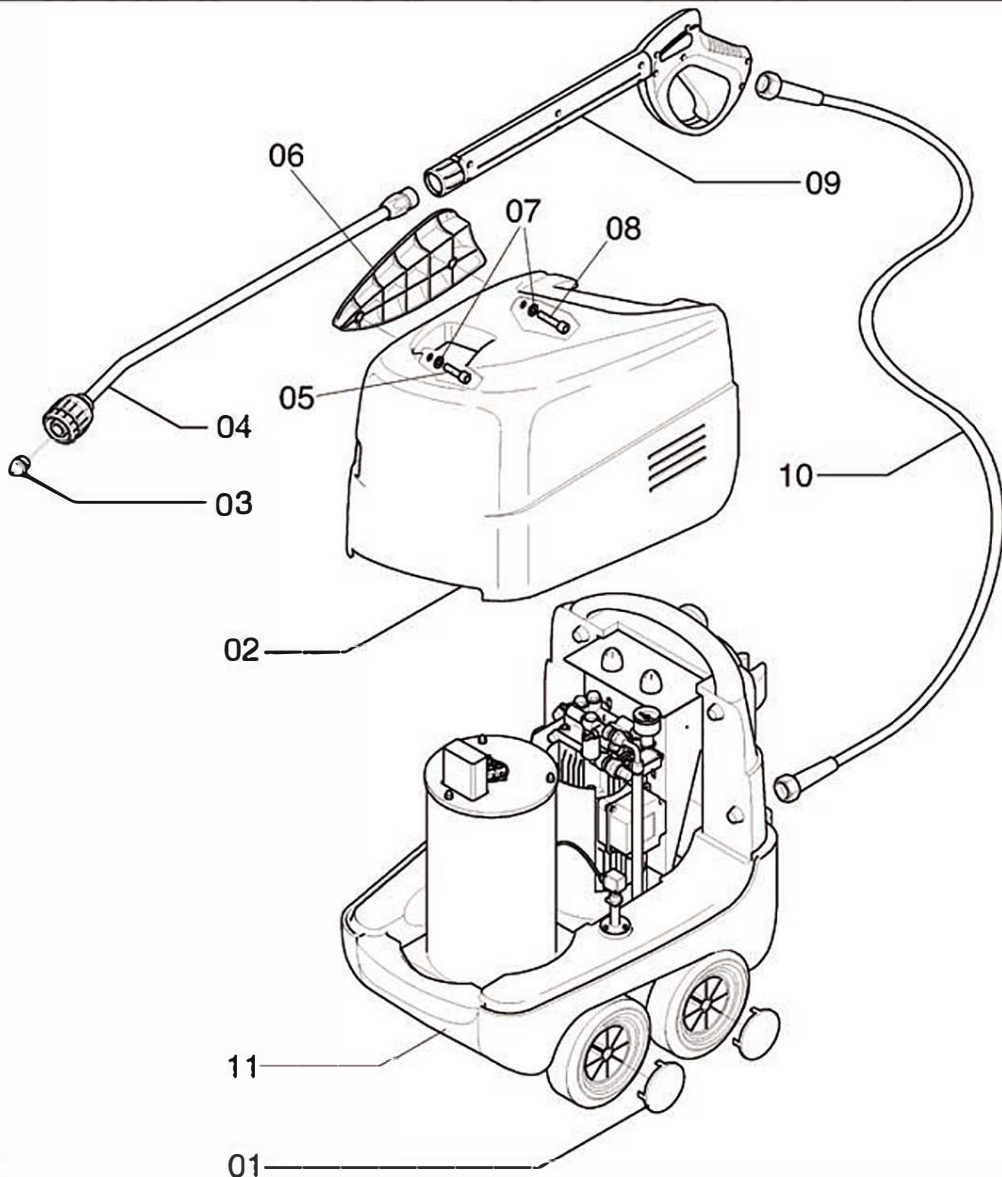


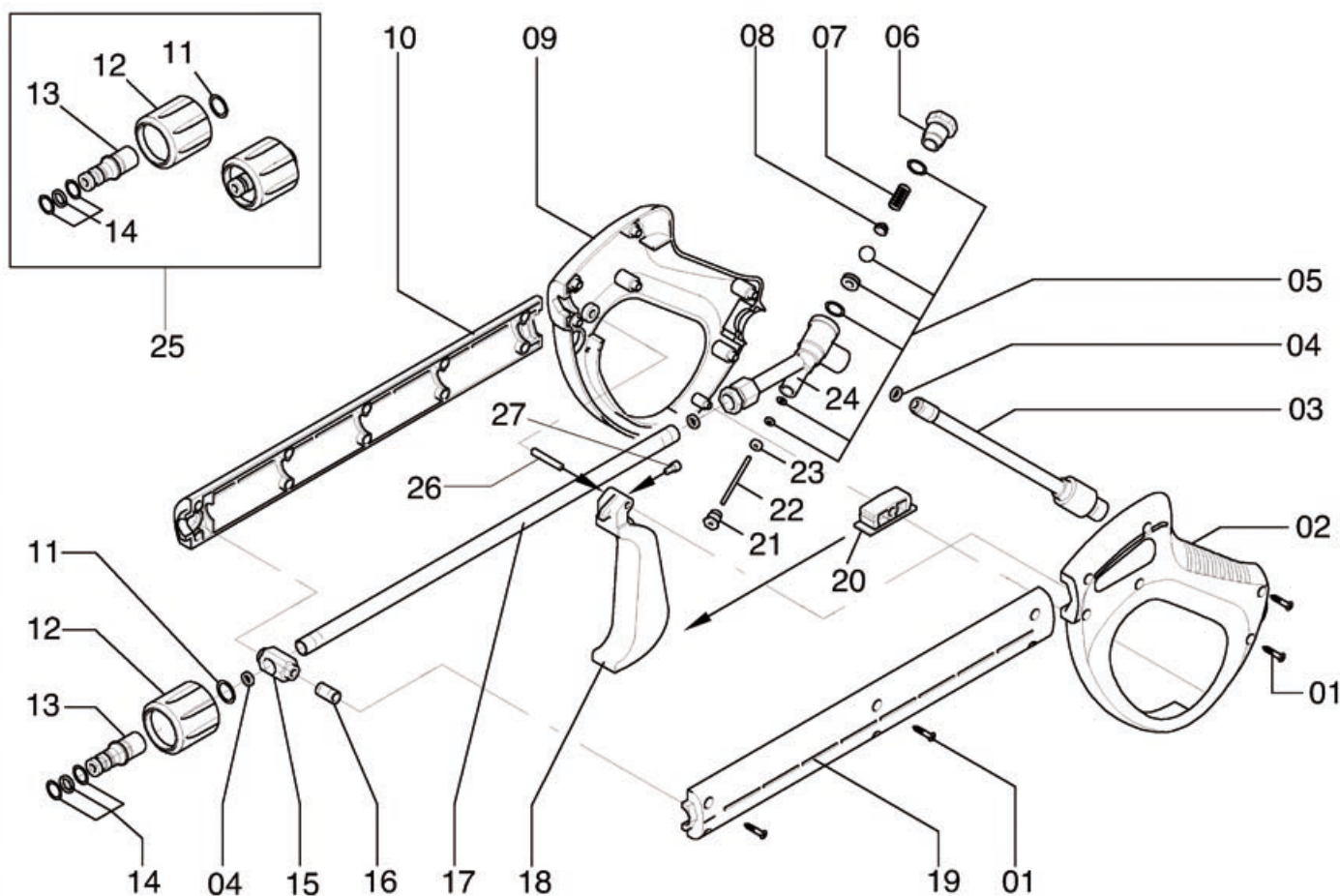
Despiece KH140C



Tab. 05.01

Pos.	Cod.	Descrizione	Description	Descripción	Nº
01a	1.085.04.002	Coprimozzo Blu	Blue Hub-cap	Tapacubos azul	2
01b	1.085.04.007	Coprimozzo Rosso	Red Hub-cap	Tapacubos rojo	2
01c	1.085.04.006	Coprimozzo Giallo	Yellow Hub-cap	Tapacubos amarillo	2
02a	1.014.14.001	Scocca Blu	Blue Cover	Bastidor azul	1
02b	1.014.14.029	Scocca Rossa	Red Cover	Bastidor rojo	1
02c	1.014.14.050	Scocca Gialla	Yellow Cover	Bastidor amarillo	1
03	4.027.02.028	Ugello (1504)	Nozzle (1504)	Tobera (1504)	1
04	3.020.22.021	Prolunga	Extension	Alargadera	1
05	4.002.12.007	Vite	Screw	Tornillo	1
06	1.011.04.003	Supporto porta lancia	Washing gun holder support	Soporte porta-pistola de lavado	1
07	4.008.24.001	Rondella	Washer	Arandela	2
08	4.002.12.018	Vite	Screw	Tornillo	1
09	3.021.22.001	Pistola	Trigger gun	Pistola	1
10	2.006.24.003	Tubo	Tube	Tubo	1
11a	2.049.14.005	Idropulitrice 1 ~ 50 Hz	High pressure cleaner 1 ~ 50 Hz	Idrolimpiadora 1 ~ 50 Hz	1
11b	2.049.14.008	Idropulitrice 1 ~ 60 Hz	High pressure cleaner 1 ~ 60 Hz	Idrolimpiadora 1 ~ 60 Hz	1

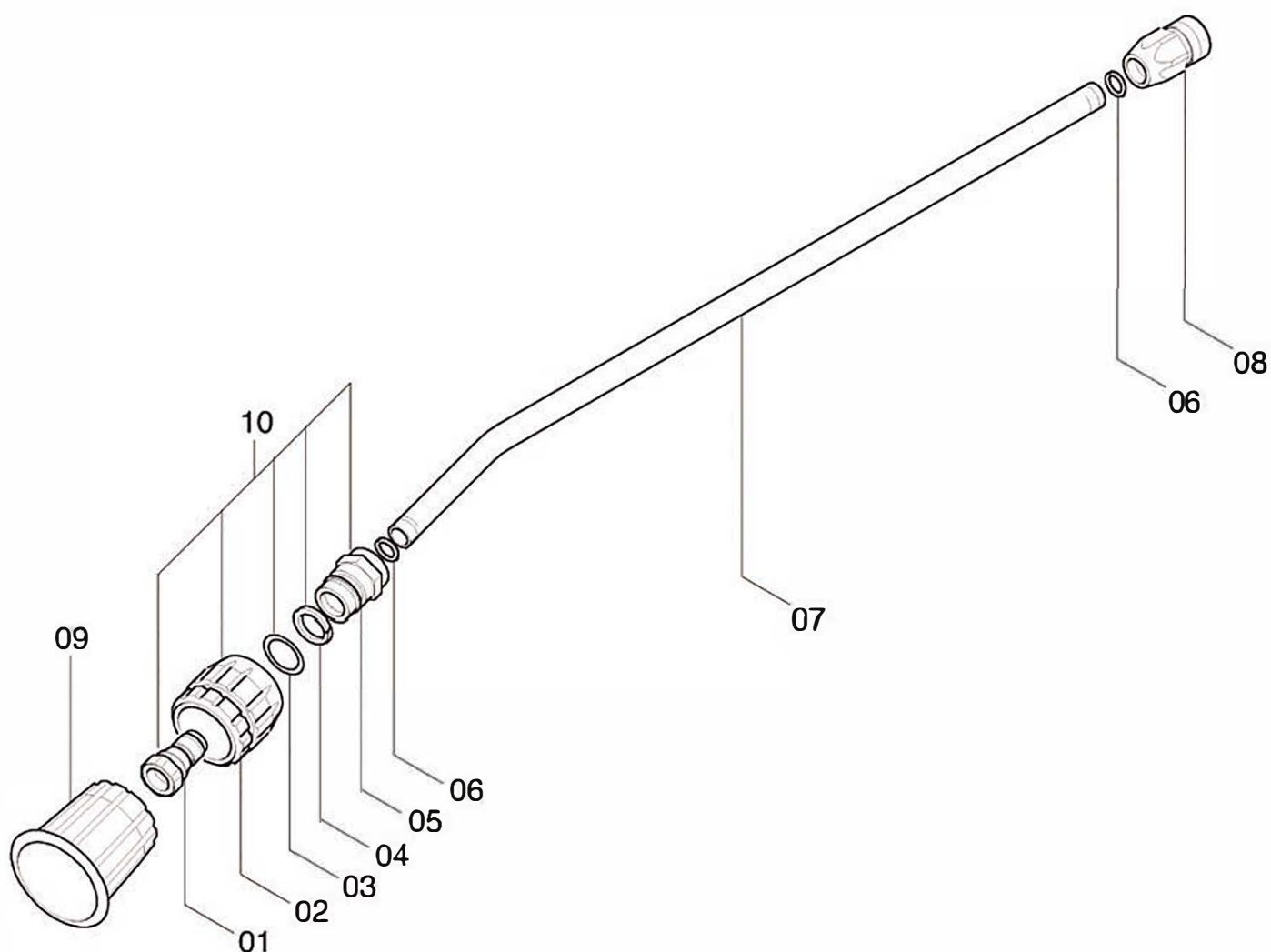
PISTOLA - TRIGGER GUN - PISTOLA



Tab. 03.02 R2

Pos.	Cod.	Descrizione	Description	Descripción	N°
01	4.002.92.001	Vite	Screw	Tornillo	12
02	1.014.02.006	Scocca superiore	Top cover	Bastidor superior	1
03	1.001.02.010	Raccordo Entrata	Intake connection	Racor entrada	1
04	4.008.12.003	Rondella Rame	Copper washer	Arandela	3
05	9.010.02.001	Tenute Pistola	Trigger gun seals	Cierre pistola	1
06	1.012.12.002	Tappo	Plug	Tapón	1
07	1.025.12.001	Molla	Spring	Muelle	1
08	1.072.02.009	Premimolla	Spring clamp	Prensamuelle	1
09	1.014.02.007	Scocca Inferiorre	Bottom cover	Bastidor inferior	1
10	1.017.02.004	Impugnatura Inferiore	Lower grip	Empuñadura inferior	1
11	1.027.22.001	Anello elastico	Elastic ring	Anillo elástico	1
12	2.007.02.003	Ghiera	Ring nut	Abrazadera	1
13	1.005.02.002	Innesto	Connection	Empalme	1
14	3.017.02.002	Tenute A.R.F.	Quick Connection seals	Cierre A.R.F.	1
15	1.036.02.006	Innesto	Connection	Empalme	1
16	4.004.12.001	Grano	Nut	Tornillo prisionero	1
17	1.044.32.003	Tubo	Tube	Tubo	1
18	1.016.02.002	Leva	Lever	Palanca	1
19	1.017.02.003	Impugnatura Superiore	Upper grip	Empuñadura superior	1
20	1.002.32.001	Sicura	Safety device	Seguro	1
21	1.001.02.036	Raccordo	Connection	Racor	1
22	1.002.12.001	Perno	Pin	Perno	1
23	1.003.02.003	Rondella	Washer	Arandela	1
24	1.020.22.003	Corpo	Body	Cuerpo	1
25	3.012.02.005	Attacco Fisso	Fixed Coupling	Ataque fijo	1
26	1.013.12.001	Perno	Pin	Perno	1
27	1.036.02.004	Inserto	Insert	Legajo	1

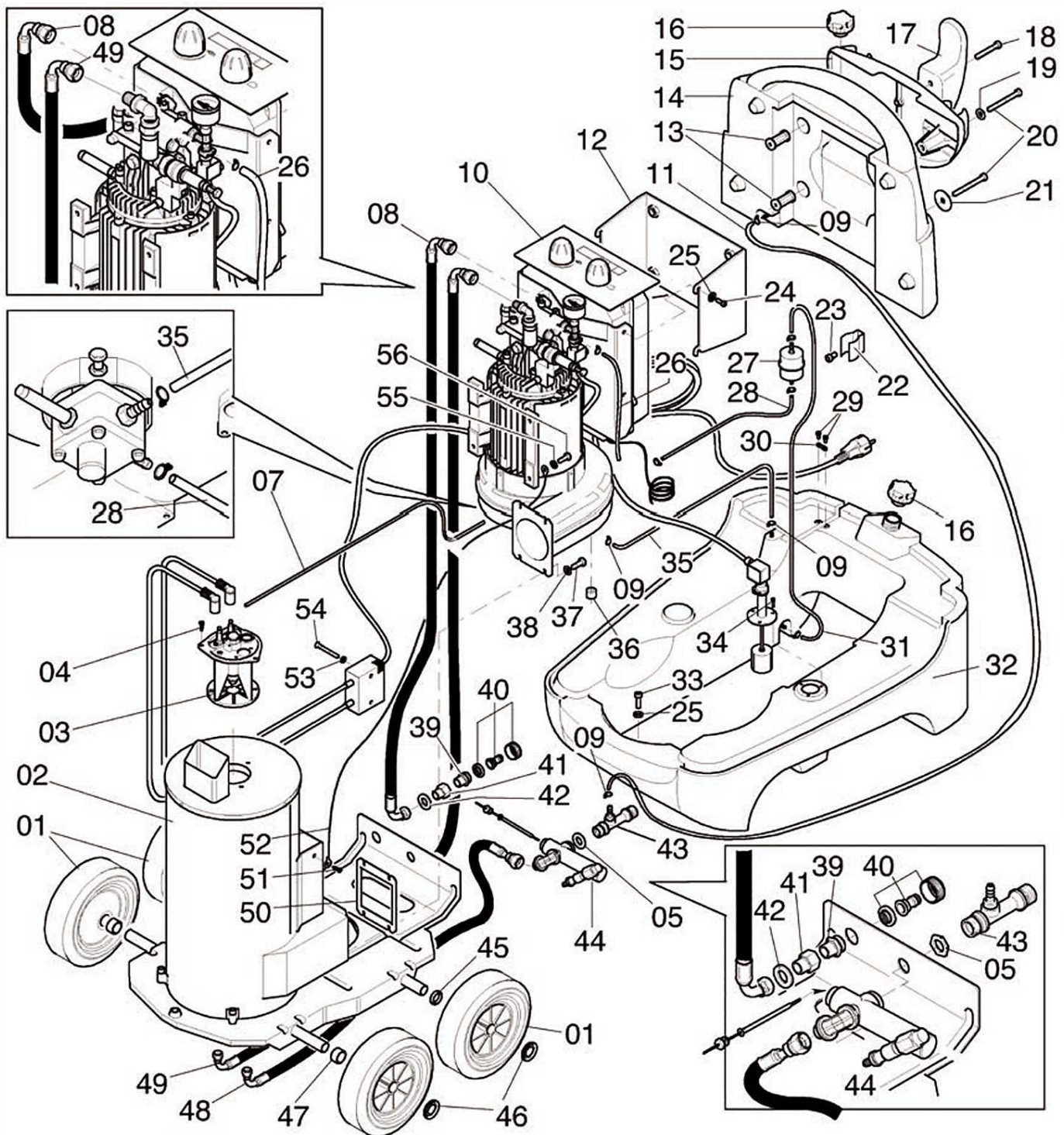
PROLUNGA - EXTENSION - ALARGADOR



Tab. 04.03

Pos.	Cod.	Descrizione	Description	Descripción	Nº
01	1.024.02.004	Diffusore	Diffusor	Difusor	1
02	2.007.02.005	Ghiera Testina	Head Knob	Abrazadera cabeza	1
03	4.005.31.007	OR	O-Ring	OR	1
04	1.027.12.011	Anello Tenuta	Seal Ring	Anillo de cierre	1
05	1.001.02.034	Raccordo	Union	Racor	1
06	4.008.12.003	Rondella Rame	Copper washer	Arandela	2
07	1.044.32.011	Tubo Prolunga	Tube	Tubo alargadera	1
08	1.001.02.011	Raccordo	Union	Racor	1
09	1.046.02.015	Protezione	Protection	Protección	1
10	3.005.02.012	Testina Regolabile	Adjustable head	Cabeza regulable	1

PREMONTATO IDRO - PREASSEMBLED IDRO - PREENSAMBLADO

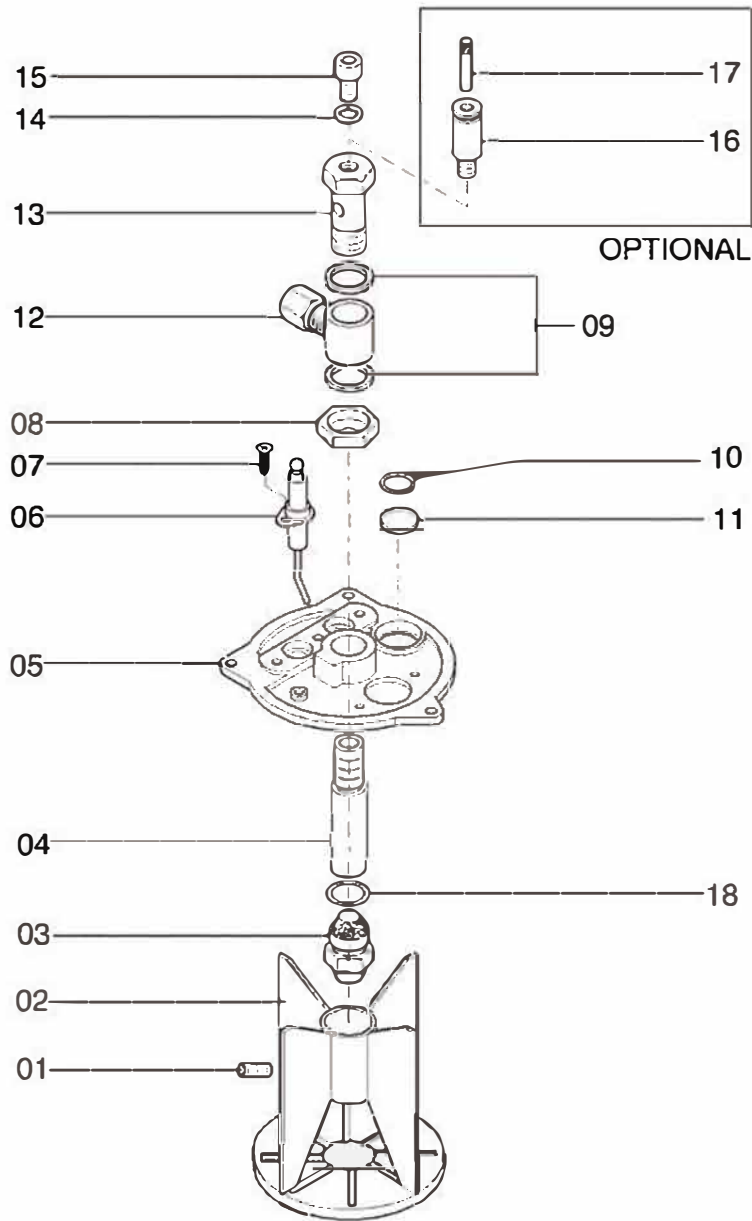


Tab. 05.04

PREMONTATO IDRO - PREASSEMBLED IDRO - PREENSAMBLADO IDRO

Pos.	Cod.	Descrizione	Description	Descripción	Nº
01	1.086.04.001	Ruota	Wheel	Rueda	4
02	2.041.04.004	Premontato caldaia telaio	Preassembled boiler frame	Preensamblado caldera bastidor	1
03	2.012.04.005	Premontato coperchio elettrodi	Preassembled electrodes cover	Preensamblado tapón electrodos	1
04	4.002.94.017	Vite autofilettante	Self-tapping screw	Tornillo autorroscador	3
05	1.015.02.019	Ghiera	Ring nut	Abrazadera	1
06					
07	1.044.54.004	Tubo rigido gasolio	Diesel fuel rigid tube	Tubo rígido gasóleo	1
08	2.006.24.001	Tubo	Tube	Tubo	1
09	4.022.04.001	Fascetta	Clip	Abrazadera	1
10a	2.034.04.004	Premontato motopompa 50 Hz	Preassembled motorpump 50 Hz	Preensamblado motobomba 50 Hz	1
10b	2.034.04.010	Premontato motopompa 60 Hz	Preassembled motorpump 60 Hz	Preensamblado motobomba 60 Hz	1
11	1.044.44.026	Tubo	Tube	Tubo	1
12	1.089.04.019	Staffa per serbatoio	Flask for tank	Estribo para tanque	1
13	1.060.04.005	Distanziale serbatoio	Tank spacer	Riostra tanque	4
14	1.033.04.002	Serbatoio detergente	Tank for detergent	Tanque detergente	1
15	1.011.04.026	Supporto portalanca	Washing gun holder support	Soporte porta-pistola de lavado	1
16	1.012.04.001	Tappo serbatoio	Tank cover	Tapón tanque	2
17	1.126.04.001	Gancio universale	Universal hook	Gancho universal	1
18	4.002.12.008	Vite	Screw	Tornillo	2
19	4.008.02.001	Rondella	Washer	Arandela	2
20	4.002.14.010	Vite	Screw	Tornillo	4
21	4.008.04.003	Rondella	Washer	Arandela	2
22	1.011.02.003	Supporto	Support	Soporte	1
23	4.002.94.002	Vite autofilettante	Self-tapping screw	Tornillo autorroscador	1
24	4.002.14.014	Vite	Screw	Tornillo	4
25	4.008.04.002	Rondella	Washer	Arandela	5
26	1.044.44.023	Tubo	Tube	Tubo	1
27	4.028.04.001	Filtro	Filter	Filtro	1
28	1.044.44.024	Tubo	Tube	Tubo	1
29	4.002.72.002	Vite	Screw	Tornillo	5
30	1.045.04.003	Fascetta	Clamp	Faja	1
31	1.044.44.027	Tubo	Tube	Tubo	1
32	1.033.04.001	Serbatoio carburante	Fuel tank	Tanque carburante	1
33	4.002.11.002	Vite	Screw	Tornillo	1
34	4.002.74.005	Vite	Screw	Tornillo	1
35	1.044.44.025	Tubo trasparente	Transparent tube	Tubo trasparente	1
36	1.060.04.013	Distanziale	Spacer	Distancial	1
37	4.002.42.003	Vite	Screw	Tornillo	1
38	4.008.24.002	Rondella	Washer	Arandela	1
39	1.001.02.007	Raccordo	Connection	Racor	1
40	2.021.02.001	Inserto a sfera	Spheric insert	Inserto esférico	1
41	1.019.04.001	Riduzione	Adapter	Reducción	1
42	4.008.12.001	Rondella	Washer	Arandela	1
43	3.016.04.003	Iniettore	Injector	Inyector	1
44	2.048.04.003	Premontato collettore	Preassembled manifold	Preensamblado colector	1
45	4.008.24.003	Rondella	Washer	Arandela	2
46	4.025.04.001	Seeger	Seeger	Seeger	4
47	1.060.04.007	Distanziali	Spacers	Distanciales	2
48	2.006.24.002	Tubo	Tube	Tubo	1
49	2.006.24.011	Tubo	Tube	Tubo	1
50	1.032.04.004	Manicotto caldaia	Boiler coupling	Manguito caldera	1
51	4.002.94.009	Vite autofilettante	Self-tapping screw	Tornillo autorroscador	1
52	2.020.04.012	Premontato cavi elettrodi	Preassembled electrodes cables	Preensamblado cables electrodos	1
53	4.008.04.001	Rondella	Washer	Arandela	1
54	4.002.74.001	Vite	Screw	Tornillo	1
55	4.008.24.002	Rondella	Washer	Arandela	1
56	4.002.42.003	Vite	Screw	Tornillo	1

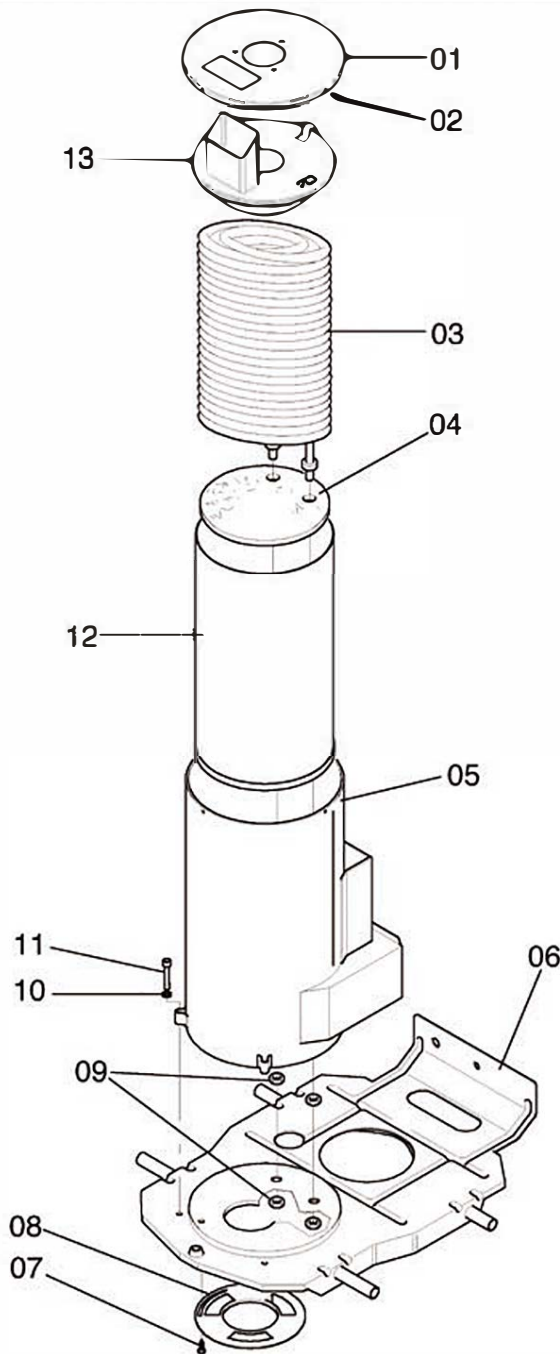
COPERCHIO PORTAELETTRODI - ELECTRODES HOLDER - TAPA PORTAELECTRODOS



Tab. 05.05

Pos.	Cod.	Descrizione	Description	Descripción	N°
01	4.004.34.001	Grano	Nut	Tornillo prigionero	1
02	2.009.04.001	Deflettore	Deflector	Deflector	1
03	4.027.14.004	Ugello	Nozzle	Tobera	1
04	1.001.04.006	Raccordo Portaugello	Nozzle holder	Racor porta-tobera	1
05	1.074.04.003	Flangia Portaelettrodi	Electrodes holder	Arandela porta-electrodos	1
06	2.032.04.003	Elettrodo	Electrode	Electrodo	2
07	4.002.94.005	Vite	Screw	Tornillo	1
08	1.015.24.003	Ghiera	Ring nut	Abrazadera	1
09	4.008.12.005	Rondella	Washer	Arandela	2
10	4.025.04.002	Seeger	Seeger	Seeger	1
11	1.102.04.001	Vetro Spia	Glass	Vidrio indicador	1
12	3.050.34.001	Raccordo	Union	Racor	1
13	1.012.14.012	Tappo Forato	Plug	Tapón	1
14	4.008.14.003	Rondella	Washer	Arandela	1
15	4.002.14.022	Vite	Screw	Tornillo	1
16	4.012.04.006	Raccordo Controllo Pressione	Pression control union	Conector rápido	1
17	4.036.04.007	Tappo	Plug	Tapón	1
18	4.005.14.004	OR	O-ring	OR	1

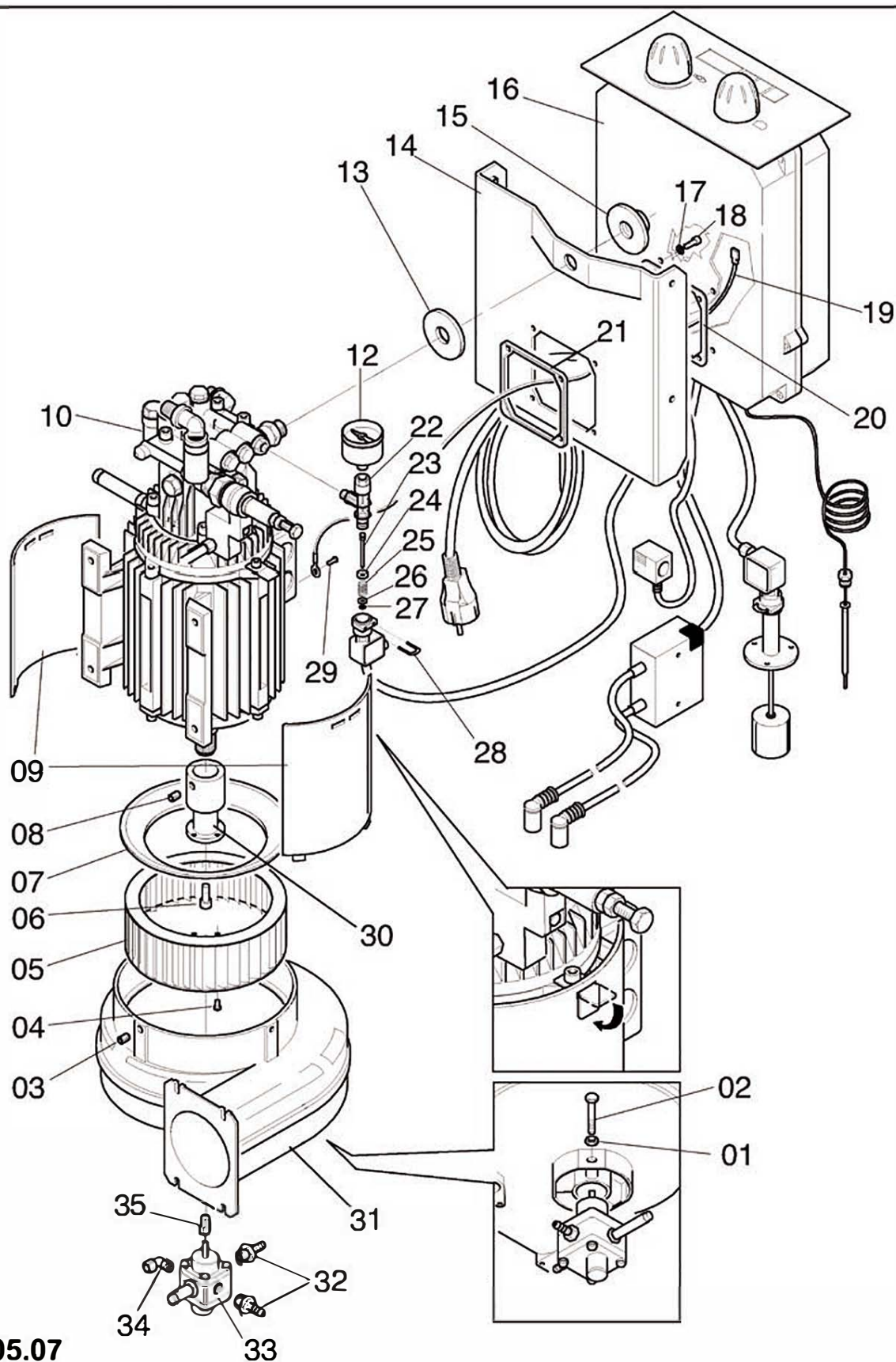
PREMONTATO CALDAIA/TELAIO - PREASSEMBLED BOILER/FRAME- PREENSAMBLADO CALDERA/ESTRUCTURA



Tab. 05.06

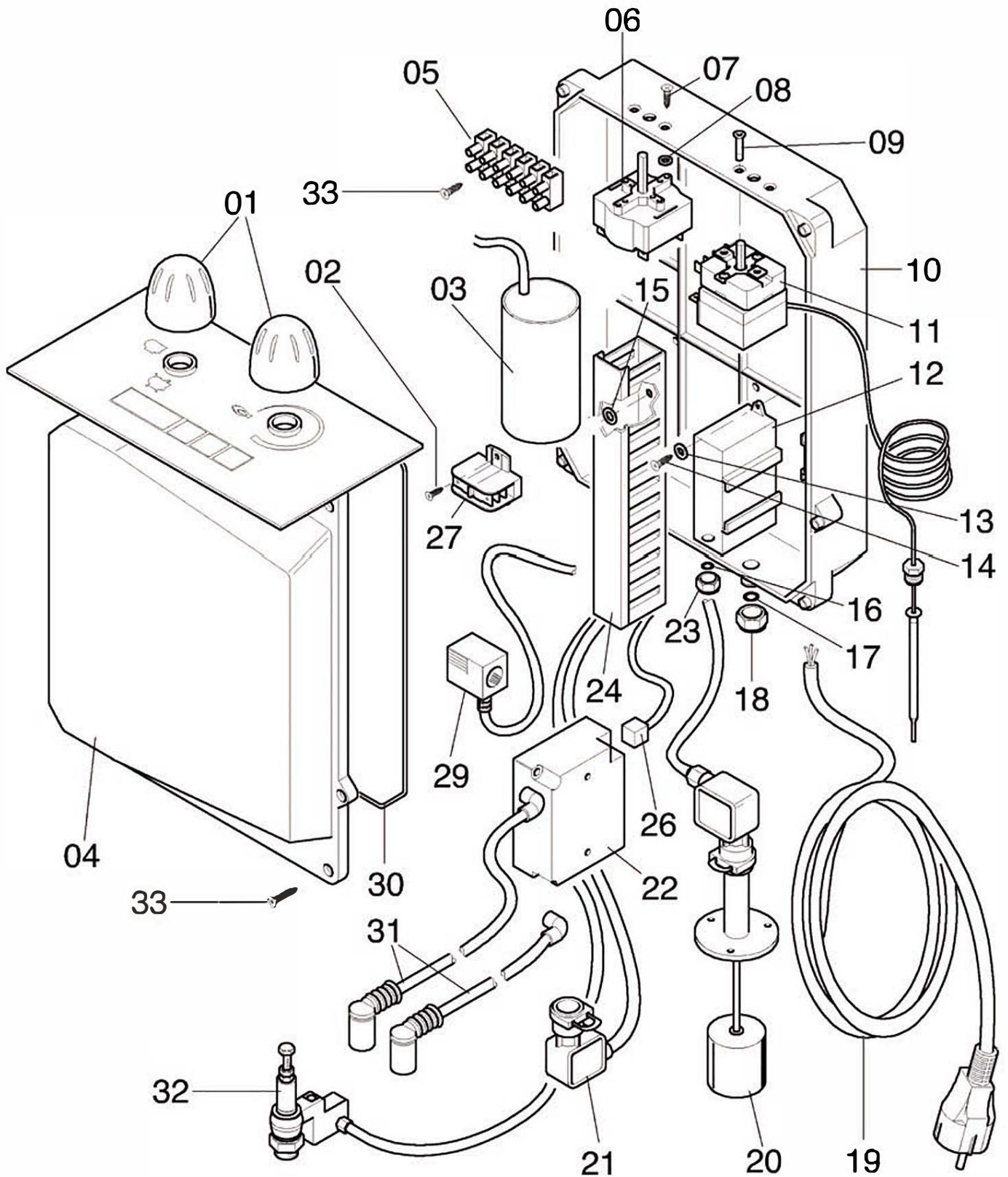
Pos.	Cod.	Descrizione	Description	Descripción	Nº
01	1.054.04.016	Coperchio caldaia	Boiler cover	Tapa caldera	1
02	4.002.94.005	Vite	Screw	Tomillo	3
03	2.029.04.006	Premontato serpentina	Preassembled warming	Preensamblado serpentín	1
04	1.094.04.010	Isolante cementato	Cemented insulator	Aislante cementado	1
05	2.023.04.005	Premontato camicia	Preassembled jacket	Preensamblado camisa	1
06	2.022.04.006	Premontato basamento	Preassembled block	Preensamblado bancada	1
07	4.002.94.020	Vite	Screw	Tomillo	2
08	1.009.02.001	Griglia controllo aria convogliatore	Grating for conveyor air control	Rejilla de control aire transportador	1
09	1.015.04.002	Ghiera	Ring nut	Abrazadera	4
10	4.008.02.001	Rondella	Washer	Arandela	3
11	4.002.12.007	Vite	Screw	Tomillo	3
12	4.023.04.006	Premontato camicia	Preassembled jacket	Preensamblado camisa	1
13	2.012.04.002	Premontato coperchio	Preassembled cover	Preensamblado tapa	1

**PREMONTATO MOTOPOMPA, QUADRO ELETTRICO,
VENTOLA, POMPA GASOLIO - PREASSEMBLED PUMP-SET,
SWITCHBOARD, FAN, DIESEL PUMP - PREENSAMBLADO MOTOBOMBA,
CUADRO ELÉCTRICO, ROTOR, BOMBA GASÓLEO**



Tab. 05.07

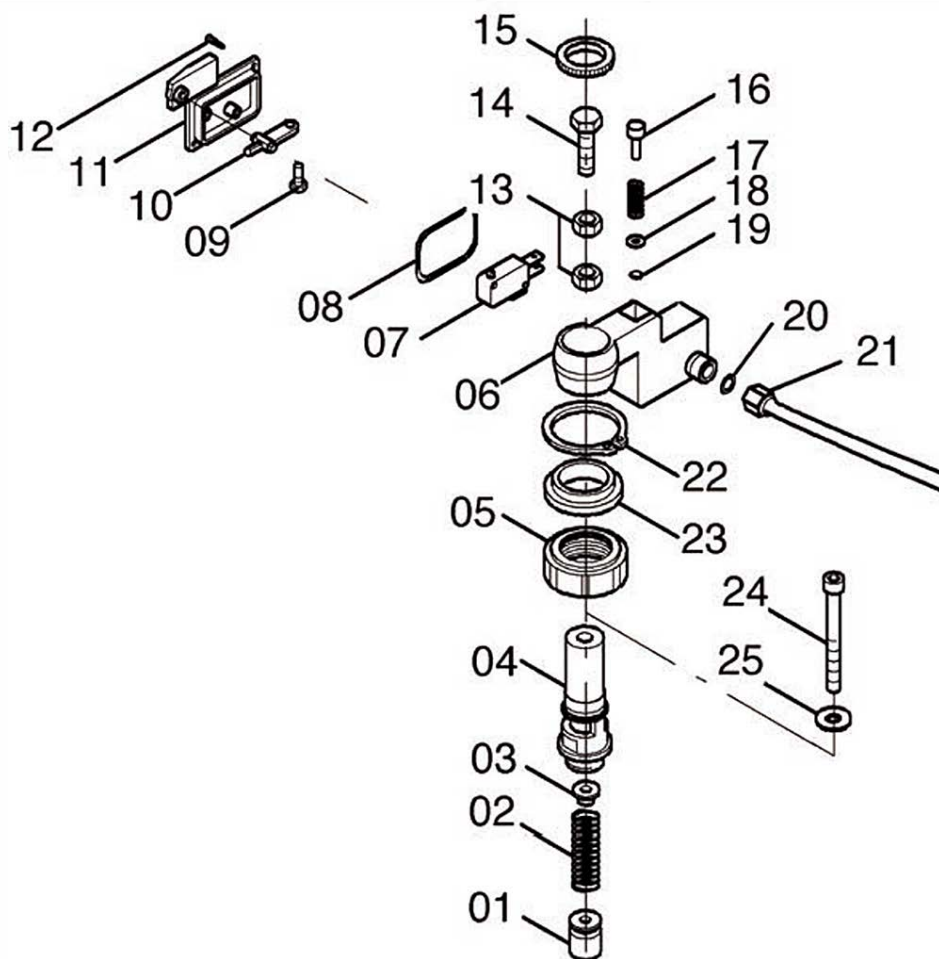
PREMONTATO SCATOLA ELETTRICA - PREASSEMBLED
ELECTRIC CASE - PREENSAMBLADO CAJA ELÉCTRICA



Tab. 05.08

PREMONTATO TOTALSTOP - PREASSEMBLED

TOTALSTOP - PREENSAMBLADO TOTALSTOP

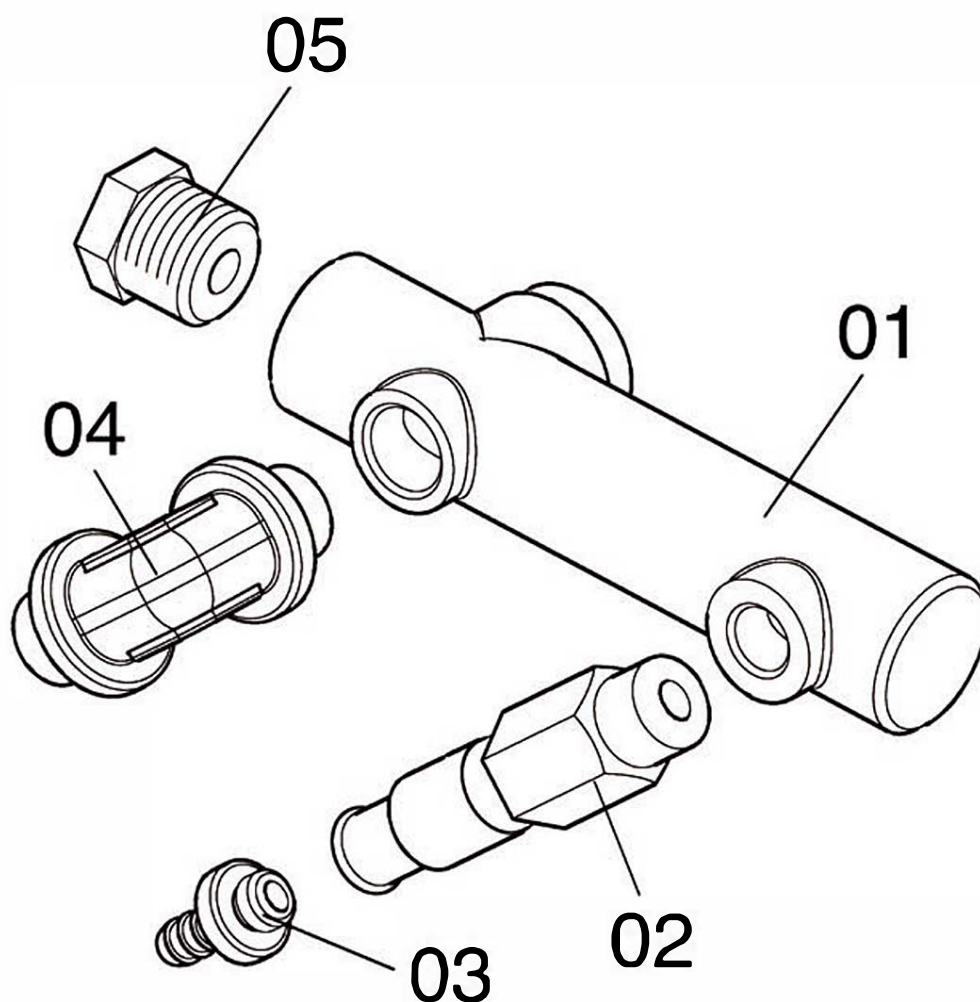


Tab. 03.09

Pos.	Cod.	Descrizione	Description	Descripción	Nº
01	1.072.02.005	Premimolla	Spring clamp	Prensamuella	1
02	1.025.22.005	Molla	Spring	Muelle	1
03	1.072.02.008	Premimolla Totalstop	Totalstop Spring clamp	Prensamuella Totalstop	2
04	1.021.02.008	Corpo Totalstop	Totalstop Body	Cuerpo Totalstop	1
05	1.015.02.014	Ghiera	Ring nut	Abrazadera	1
06a	1.078.02.003	Scatola	Box	Caja	1
06b	1.078.02.003	Scatola (CSA)	Box (CSA)	Caja (CSA)	1
07	2.020.02.007	Microinterruttore con cavo	Microswitch with cable	Micro con cable	1
08	4.005.22.021	OR	O-ring	OR	1
09	4.002.44.011	Vite	Screw	Tornillo	1
10a	1.016.22.001	Leva	Lever	Palanca	1
10b	1.016.22.003	Leva (CSA)	Lever (CSA)	Palanca (CSA)	1
11	1.054.02.004	Coperchio	Cover	Tapa	1
11	1.054.02.007	Coperchio (CSA)	Cover (CSA)	Tapa (CSA)	1
12	4.002.92.002	Vite autofilettante	Self-tapping screw	Tornillo autorroscador	1
13	4.009.02.002	Dado	Nut	Tuerca	2
14	4.002.42.003	Vite	Screw	Tornillo	1
15	1.015.02.012	Ghiera	Ring nut	Abrazadera	1
16	1.071.02.004	Pistone	Piston	Pistón	1
17	1.025.12.013	Molla	Spring	Muelle	1
18	4.008.02.002	Rondella	Washer	Arandela	1
19	4.005.22.003	OR	O-ring	OR	1
20	4.005.22.006	OR	O-ring	OR	1
21	1.015.32.010	Ghiera	Ring nut	Abrazadera	2
22	4.025.02.002	Seeger	Seeger	Seeger	1
23	1.030.02.014	Rondella	Washer	Arandela	1
24	4.002.12.015	Vite	Screw	Tornillo	1
25	4.008.04.001	Rondella	Washer	Arandela	1

VALVOLA INTEGRATA - INTEGRATED VALVE

VÁLVULA INTEGRADA

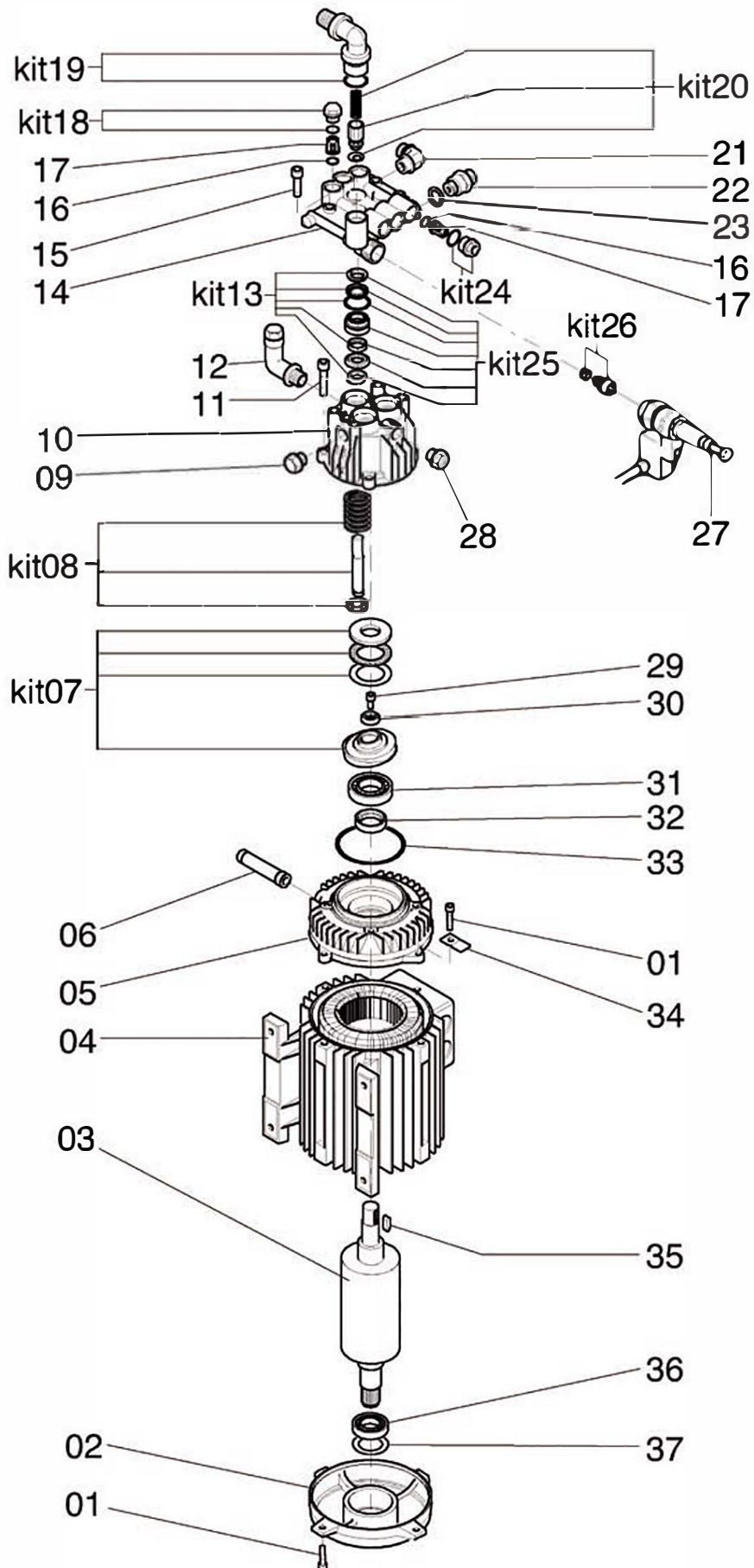


Tab. 05.12

Pos.	Cod.	Descrizione	Description	Descripción	Nº
01	1.042.24.002	Corpo	Body	Cuerpo	1
02	3.003.22.004	Valvola sicurezza	Safety valve	Válvula de seguridad	1
03	1.049.02.008	Portagomma	Tube holder	Portagoma	1
04	1.001.14.001	Raccordo	Connection	Racor	1
05	1.019.04.008	Ghiera	Ring nut	Abrazadera	1

COMPLESSIVO MOTOPOMPA - MOTORPUMP

LAY-OUT - ESQUEMA GENERAL MOTOBOMBA



Tab. 05.11



KRÜGER TECHNOLOGY S.L.
B-82526583
Polígono Agustinos C/G Parcela B2
31013 Pamplona (Navarra) - ESPAÑA
+34 948 343 393 - info@kruger.es - www.kruger.