

M6 X 12 UNI 5933

# LISTA RICAMBI

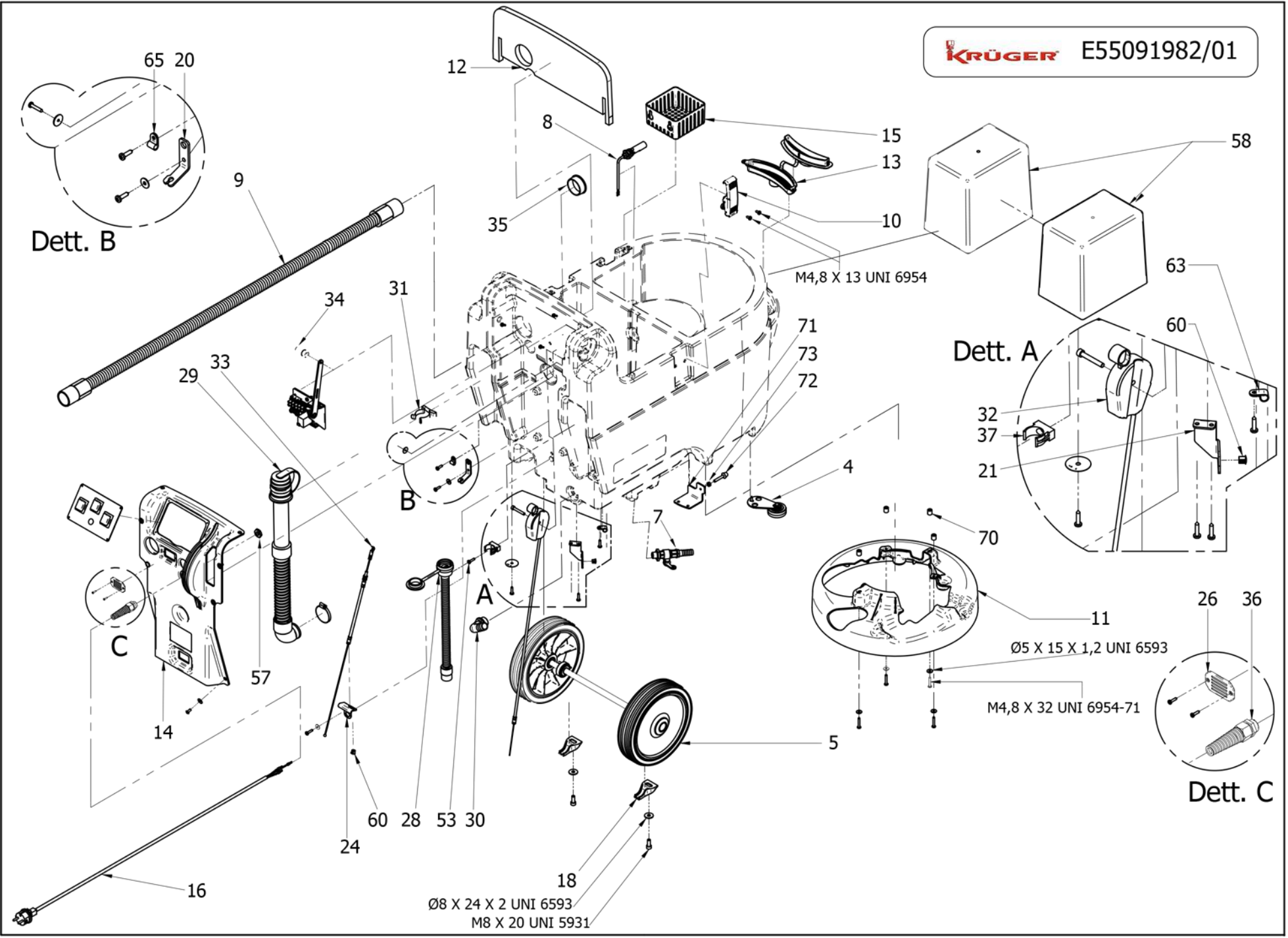
**CODICE:** 8.524.3301      **REV.:** 1      **DESCRIZIONE:** Fregadora KFL450E      220-240V/50-60Hz

**DATA INIZIO VAL.:** 02/16/2012      **DATA FINE VAL.:** 01/01/3000

**CODICE GRUPPO:** R55091824      **REV.:** 1      **DESCRIZIONE:** BRUSH PLATE ASSY

**DATA INIZIO VAL.:** 09/16/2010      **DATA FINE VAL.:** 01/01/3000      **N. TAVOLA:** E55091824/01

<b>CODICE:</b>	<b>DESCRIZIONE:</b>	<b>QTA':</b>	<b>POS:</b>	<b>ORD</b>	<b>EXTR.</b>
5.501.0075	ELECTRIC MOTOR 220-240V 50-60HZ 0,55KW	1	01		X
5.511.1673	BRUSH PLATE COMPONENTS	1	02		
3.099.1394	BRUSH BELD	1	03		X

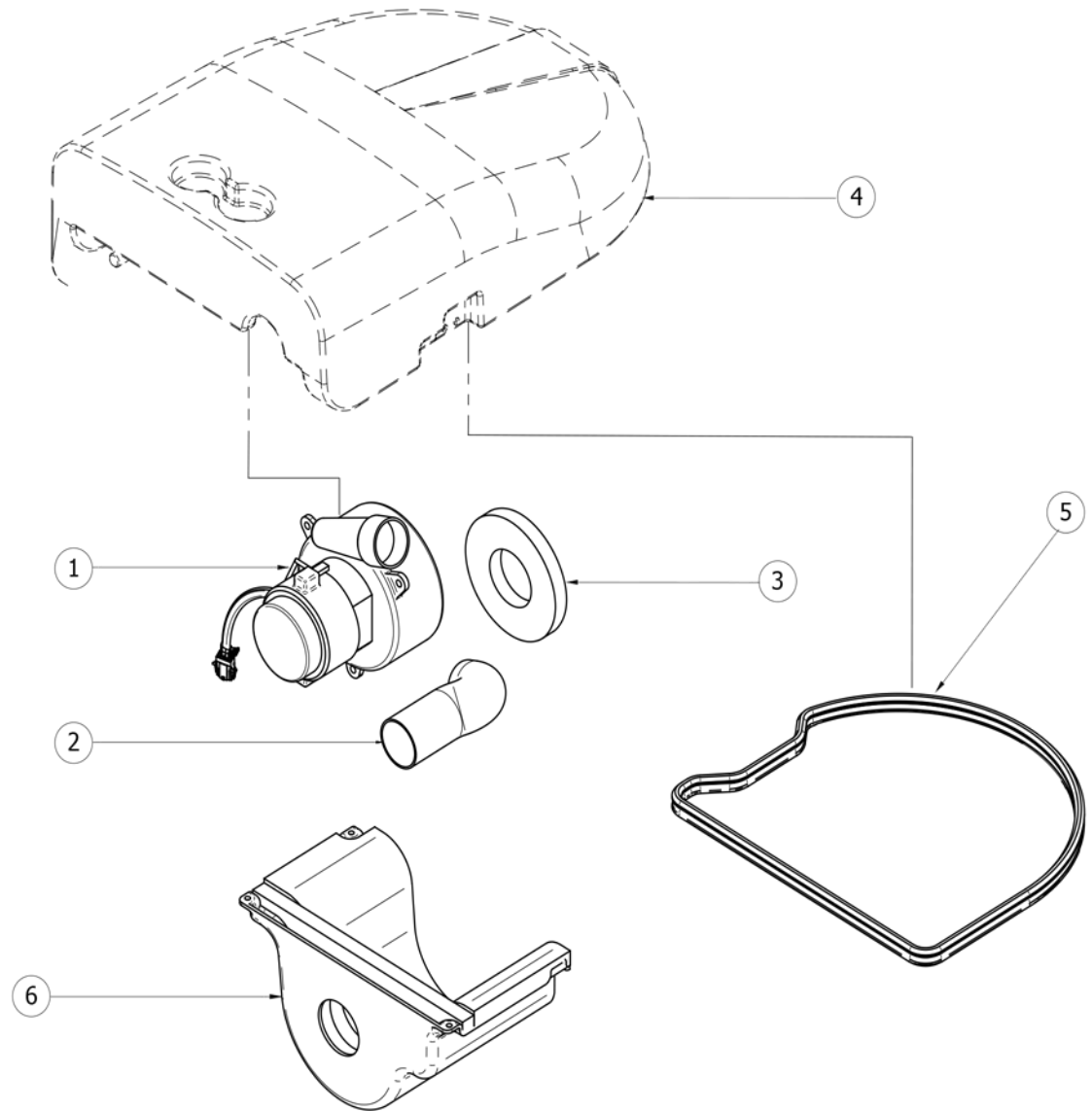


**LISTA RICAMBI**
**CODICE:** 8.524.3301      **REV.:** 1      **DESCRIZIONE:** Fregadora KFL450E      **220-240V/50-60Hz**
**DATA INIZIO VAL.:** 02/16/2012      **DATA FINE VAL.:** 01/01/3000

**CODICE GRUPPO:** R55091982      **REV.:** 1      **DESCRIZIONE:** TANK COMPONENTS

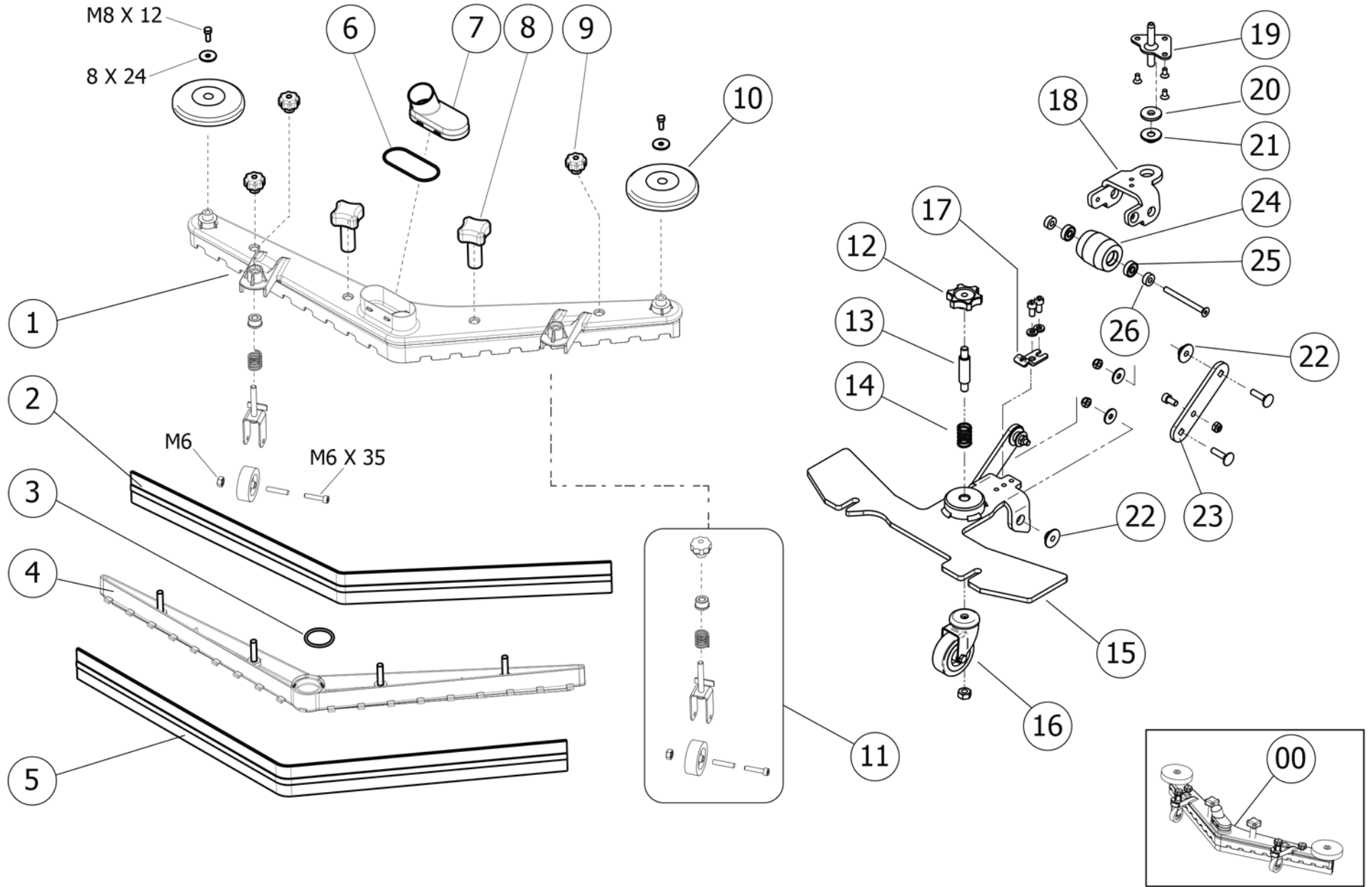
**DATA INIZIO VAL.:** 03/04/2011      **DATA FINE VAL.:** 01/01/3000      **N. TAVOLA:** E55091982/01

<b>CODICE:</b>	<b>DESCRIZIONE:</b>	<b>QTA':</b>	<b>POS:</b>	<b>ORD</b>	<b>EXTR.</b>
5.511.1678	WHEEL	1	004		
5.511.1677	AXLE WITH WHEELS	1	005		
5.511.1674	TAP SET	1	007		
3.403.0043	FLOATING SWITCH	1	008		X
5.511.0535	SUCTION HOSE ASSEMBLY	1	009		
5.209.0089	COMPLETE LOCKER FOR PROFESSIONAL VACUUM CLEANER	2	010		
4.513.0383	BRUSH COVER	1	011		
4.508.1457	CAP WITH FILTER	1	013		
4.508.1078	REAR COVER	1	014		
4.508.1076	SMALL BASKET	1	015		
3.499.0394	MAIN POWER CORDS	1	016		
4.508.0689	FIXING WHEEL AXLE - SWIFT B	2	018		
4.507.1349	BRACKET	1	020		
4.507.1360	BRACKET	1	021		
4.507.1336	BRACKET FOR SQUEEGEE CABLE	1	024		
4.505.0237	CAP	2	026		
3.752.0227	UNLOADER HOSE FOR SOLUTION TANK	1	028		
3.752.0229	UNLOADER HOSE FOR RECOVERY TANK	1	029		
3.100.0356	JOINT 3/4 D.22	1	030		
3.099.1553	HOSE HOLDER	1	031		
3.099.1723	SOLUTION TAP LEVER	1	032		X
3.099.1537	SQUEEGEE CABLE	1	033		
3.099.1536	HANDLE FOR SQUEEGEE LEVER	1	034		
3.099.1535	CAP D=51,5	1	035		
3.406.0040	CABLE TERMINAL PG.11	1	036		
3.099.1409	CLIPS	1	037		
3.406.0041	NUT FOR CABLE HOLDER PG11	1	057		
3.099.1597	BALLAST 25KG.	2	058		
3.099.1193	STOPPER IN BLACK RUBBER	2	060		
3.099.1581	CLAMP D.9,5	1	063		
3.099.1587	CLAMP D.6,4	1	065		
4.506.0269	SPACER	4	070		
4.507.1403	SUPPORT FOR MOTOR	1	071		
3.099.1628	REGULATION SCREW M6X45	1	072		



**LISTA RICAMBI****CODICE:** 8.524.3301      **REV.:** 1      **DESCRIZIONE:** Fregadora KFL450E      220-240V/50-60Hz**DATA INIZIO VAL.:** 02/16/2012      **DATA FINE VAL.:** 01/01/3000**CODICE GRUPPO:** R55091983      **REV.:** 1      **DESCRIZIONE:** HOOD PARTS**DATA INIZIO VAL.:** 03/04/2011      **DATA FINE VAL.:** 01/01/3000      **N. TAVOLA:** E55091826/01

<b>CODICE:</b>	<b>DESCRIZIONE:</b>	<b>QTA':</b>	<b>POS:</b>	<b>ORD</b>	<b>EXTR.</b>
3.755.0096	VACUUM MOTOR 230V	1	01		X
4.508.1462	WASTE HOSE	1	02		
4.508.0163	GASKET FOR SUCTION MOTOR	1	03		X
4.508.1073	VACUUM CAP	1	04		
4.508.1088	GASKET FOR VACUUM CAP	1	05		X
5.511.1746	COMMON PARTS COVER GROUP FOR ALCOR-SPEED-NEXT-MIZAR ECO	1	06		



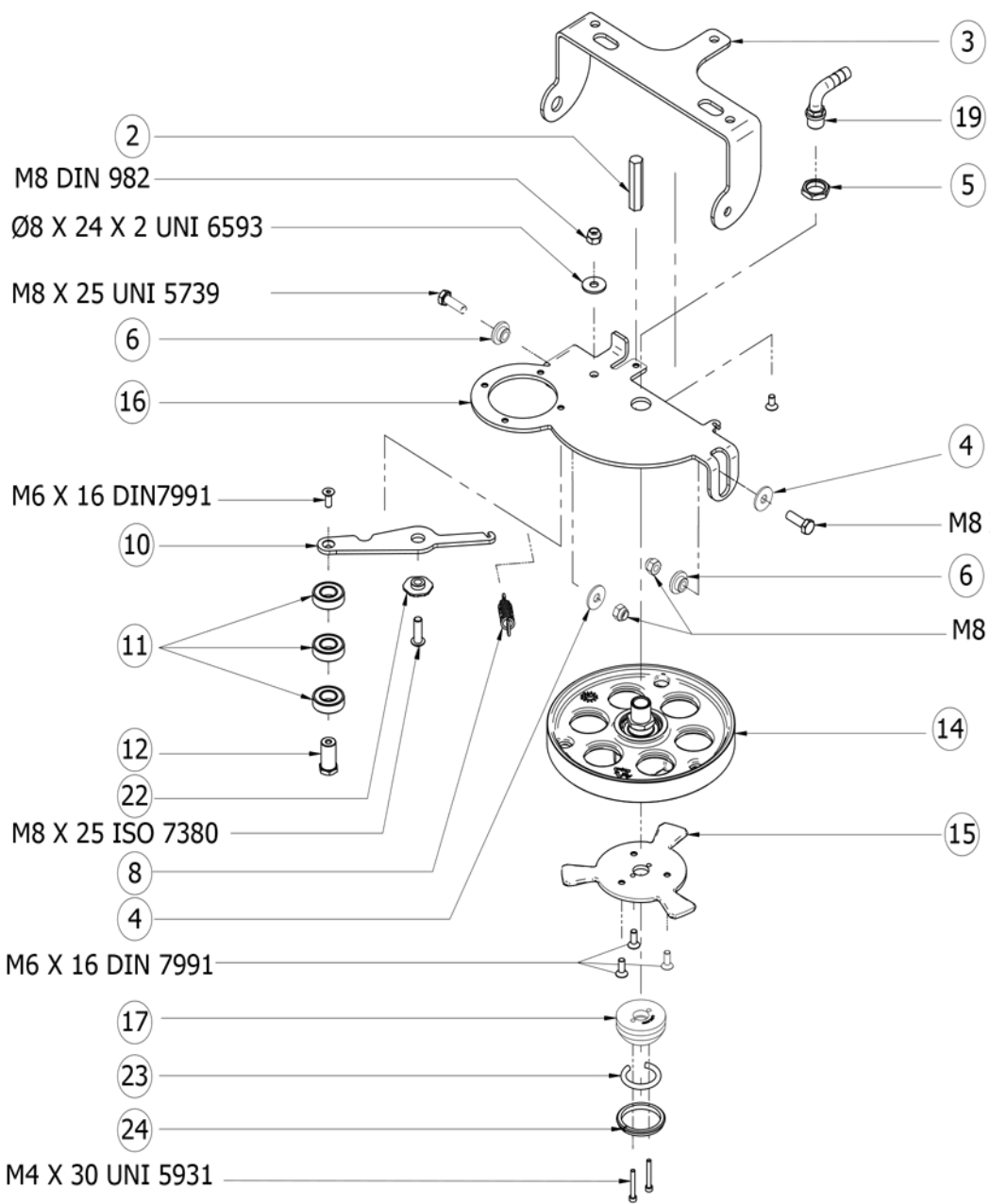
**LISTA RICAMBI**
**CODICE:** 8.524.3301      **REV.:** 1      **DESCRIZIONE:** Fregadora KFL450E      **220-240V/50-60Hz**
**DATA INIZIO VAL.:** 02/16/2012      **DATA FINE VAL.:** 01/01/3000

**CODICE GRUPPO:** R55091984      **REV.:** 1      **DESCRIZIONE:** SQUEEGEE ASSEMBLY

**DATA INIZIO VAL.:** 03/07/2011      **DATA FINE VAL.:** 01/01/3000      **N. TAVOLA:** E55091984/01

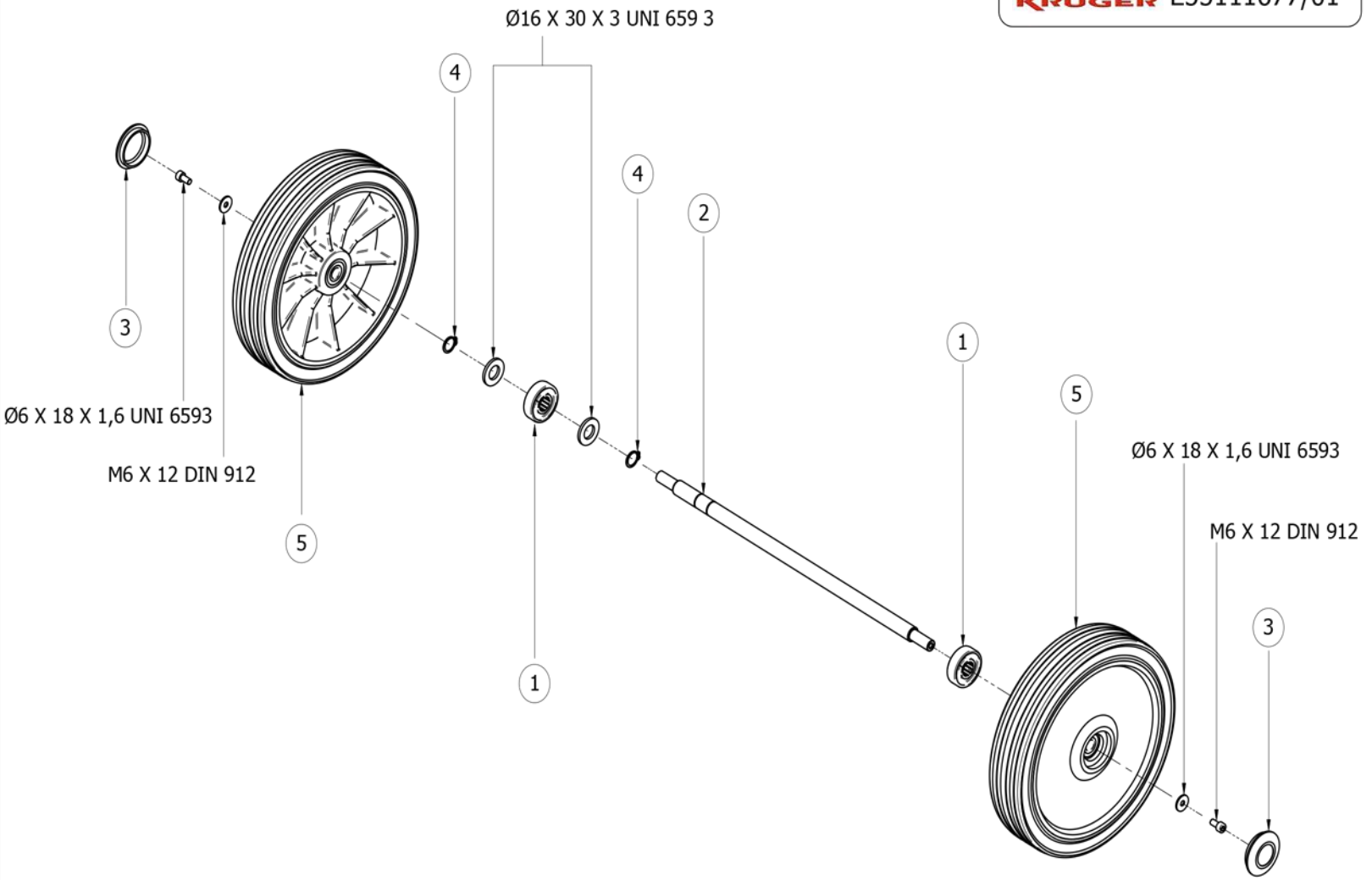
<b>CODICE:</b>	<b>DESCRIZIONE:</b>	<b>QTA':</b>	<b>POS:</b>	<b>ORD</b>	<b>EXTR.</b>
5.511.1795	SQUEEGEE ASSY	1	00		
4.505.0866	SQUEEGEE L=780 MM SANDBLAST AND CATAPHORESIS TREATMENT	1	01		
4.508.X468	FRONT SQUEEGEE BLADE L.830 TH.2,5	1	02	X	
3.200.0168	O-RING 4143	1	03		
4.508.0505	SQUEEGEE BLADES HOLDER	1	04		
4.508.X467	REAR SQUEEGEE BLADE L.870 TH.3	1	05	X	
3.200.0172	O-RING 3275	1	06		
4.508.1552C	SQUEEGEE SUCTION COMPARTMENT COVER	1	07		
3.099.1265	KNOB D.52 M8	2	08		
3.099.0467	KNOB M8	4	09		
4.508.0224	BUMPER WHEEL D.110 GREY	2	10		X
5.511.1823	SQUEEGEE WHEEL ASSEMBLY	2	11		X
3.099.1189	KNOB M8 H26	1	12		
4.507.1385	ADJUSTING PIN	1	13		
4.507.1076	SPRING	1	14		
5.513.0272	SQUEEGEE SUPPORT	1	15		
3.006.0076	SQUEEGEE WHEEL (D.50)	1	16		X
4.507.1336	BRACKET FOR SQUEEGEE CABLE	1	17		
4.507.1383	SQUEEGEE SUPPORT PLATE	1	18		
5.513.0271	SMALL PLATE FOR SQUEEGEE	1	19		
4.507.0344	WASHER	1	20		
4.508.1467	BUSHING	1	21		
4.508.1468	BUSH	4	22		
4.507.1384	CONNECTION PLATE (SQUEEGEE SUPPORT-SQUEEGEE SUPPORT PLATE)	2	23		
4.508.1509	WHEEL FOR SQUEEGEE SUPPORT ALCOR-SPEED	1	24		
3.001.0092	BALL BEARING 626 2RS1	2	25		
4.506.0068	SPACER 6.5X15x5 1	2	26		





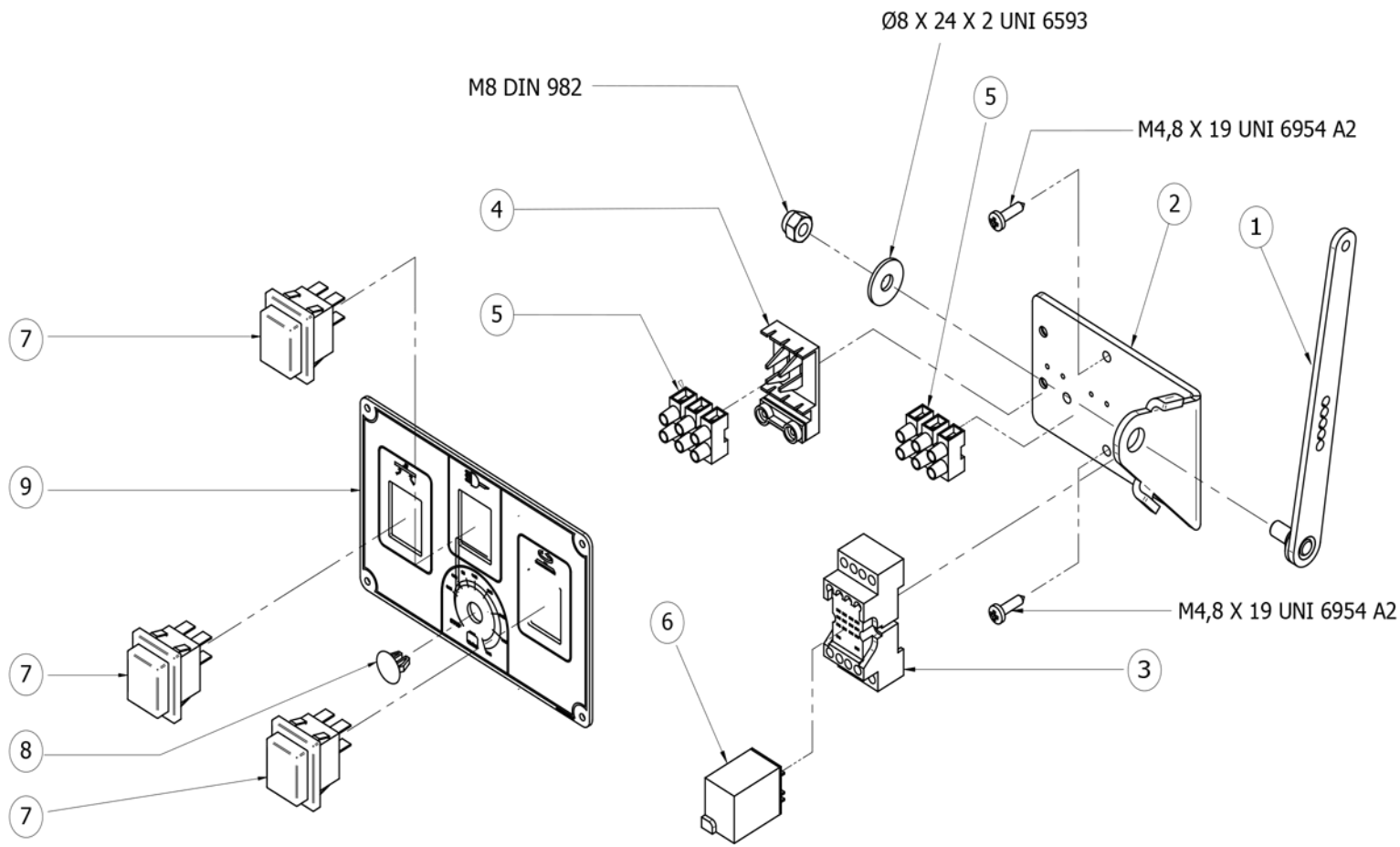
**LISTA RICAMBI****CODICE:** 8.524.3301      **REV.:** 1      **DESCRIZIONE:** Fregadora KFL450E      220-240V/50-60Hz**DATA INIZIO VAL.:** 02/16/2012      **DATA FINE VAL.:** 01/01/3000**CODICE GRUPPO:** R55111673      **REV.:** 1      **DESCRIZIONE:** BRUSH PLATE COMPONENTS**DATA INIZIO VAL.:** 09/13/2010      **DATA FINE VAL.:** 01/01/3000      **N. TAVOLA:** E55111673/01

<b>CODICE:</b>	<b>DESCRIZIONE:</b>	<b>QTA':</b>	<b>POS:</b>	<b>ORD</b>	<b>EXTR.</b>
4.507.1379	SUPPORT	1	03		
4.507.1387	KNOB M20X1,5 H=6mm	1	05		
4.506.0252	FIXING BUSH	1	06		
4.507.1272	SPRING	1	08		
4.507.1124	BELD LEVER	1	10		
3.001.0032	BEARING 6002 2RS1	3	11		
4.507.1127	BEARING SHAFT	1	12		
5.511.1691	PULLEY ASSEMBLY	1	14		
4.507.1370	BRUSH CONNECTION	1	15		
4.507.1125	SWINGING SUPPORT	1	16		
4.508.1449	BRUSH BALANCING	1	17		
3.100.0386	HOSE JOINT 3/8M FOR HOSE D.12	1	19		
4.506.0256	BELD LEVER BUSH	1	22		
3.200.0127	O-RING D=5.34 L=106	1	23		
4.508.0314	OPENED RING	1	24		



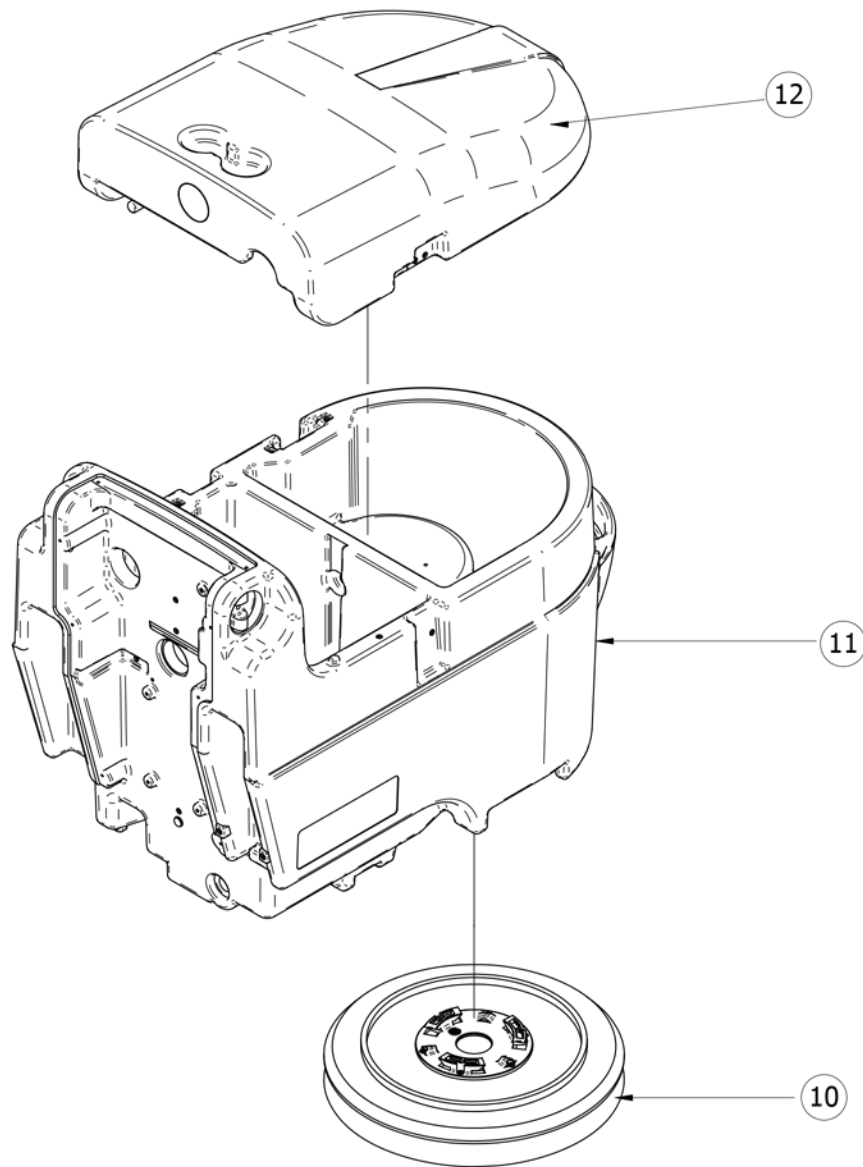
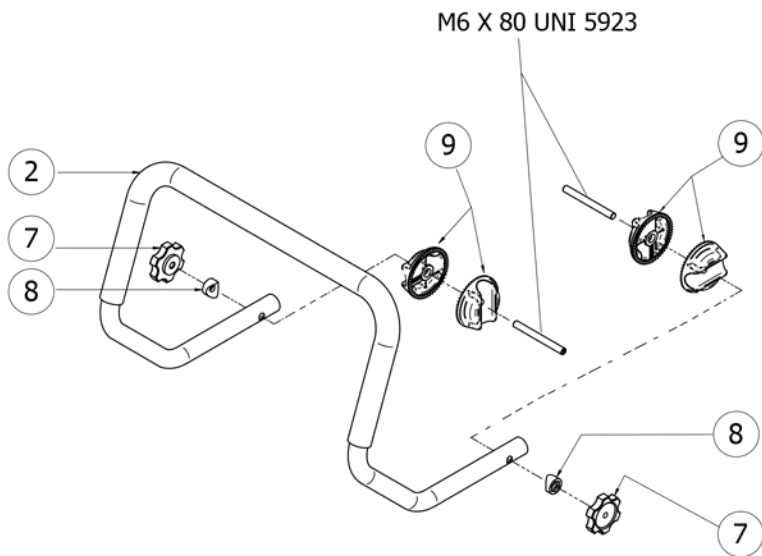
**LISTA RICAMBI****CODICE:** 8.524.3301      **REV.:** 1      **DESCRIZIONE:** Fregadora KFL450E      220-240V/50-60Hz**DATA INIZIO VAL.:** 02/16/2012      **DATA FINE VAL.:** 01/01/3000**CODICE GRUPPO:** R55111677      **REV.:** 1      **DESCRIZIONE:** AXLE**DATA INIZIO VAL.:** 09/13/2010      **DATA FINE VAL.:** 01/01/3000      **N. TAVOLA:** E55111677/01

<b>CODICE:</b>	<b>DESCRIZIONE:</b>	<b>QTA':</b>	<b>POS:</b>	<b>ORD</b>	<b>EXTR.</b>
4.508.0687	AXLE SUPPORT - SWIFT B	2	01		
4.507.1331	AXLE	1	02		
3.099.1066	CAP FOR WHEEL - GREY	2	03		
3.099.0872	SEEGER RING D.16 UNI 7435	2	04		
3.006.0145	WHEEL D.250 L.50	2	05		X



**LISTA RICAMBI****CODICE:** 8.524.3301      **REV.:** 1      **DESCRIZIONE:** Fregadora KFL450E      220-240V/50-60Hz**DATA INIZIO VAL.:** 02/16/2012      **DATA FINE VAL.:** 01/01/3000**CODICE GRUPPO:** R55111680      **REV.:** 1      **DESCRIZIONE:** DASHBOARD**DATA INIZIO VAL.:** 09/13/2010      **DATA FINE VAL.:** 01/01/3000      **N. TAVOLA:** E55111685/01

<b>CODICE:</b>	<b>DESCRIZIONE:</b>	<b>QTA':</b>	<b>POS:</b>	<b>ORD</b>	<b>EXTR.</b>
5.513.0270	SQUEEGEE LEVER	1	01		
4.507.1333	RELE' SUPPORT	1	02		
3.410.0021	RELAY SUPPORT FOR HC2SFDI	1	03		
3.405.0097	TERMINAL BOARD SUPPORT	1	04		
3.405.0096	3 STUD TERMINAL BLOCK	2	05		
3.402.0016	RELAY NAIS HJ2 AC220/240V	1	06		X
5.009.0293	RED BACKLIGHTED SWITCH WITH PR OTECTOR	3	07		X
3.099.1513	CAP D=9.5-11 SP=0.8-3.2	1	08		
4.505.0248	DASHBOARD	1	09		



**LISTA RICAMBI****CODICE:** 8.524.3301      **REV.:** 1      **DESCRIZIONE:** Fregadora KFL450E      220-240V/50-60Hz**DATA INIZIO VAL.:** 02/16/2012      **DATA FINE VAL.:** 01/01/3000**CODICE GRUPPO:** R85243301      **REV.:** 1      **DESCRIZIONE:** COMPONENTS/ACCESSORIES**DATA INIZIO VAL.:** 02/16/2012      **DATA FINE VAL.:** 01/01/3000      **N. TAVOLA:** E55091884/02

<b>CODICE:</b>	<b>DESCRIZIONE:</b>	<b>QTA':</b>	<b>POS:</b>	<b>ORD</b>	<b>EXTR.</b>
5.513.0274	HANDLEBAR -W/OUT MICRO- ALCOR-SPEED	1	02		
3.099.1566	KNOB	2	07		
3.099.1534	SPACER FOR KNOB D.22	2	08		
3.099.1533	HANDLE REGULATOR D.22	4	09		
5.511.1688	BRUSH	1	10	X	
4.508.1071	SOLUTION/RECOVERY TANK - ALCOR/SPEED - COLOUR ORANGE P822	1	11		
4.508.1073	VACUUM CAP	1	12		