



DESPIECE TÉCNICO  
HIDROLIMPIADORA  
**KH120CI**





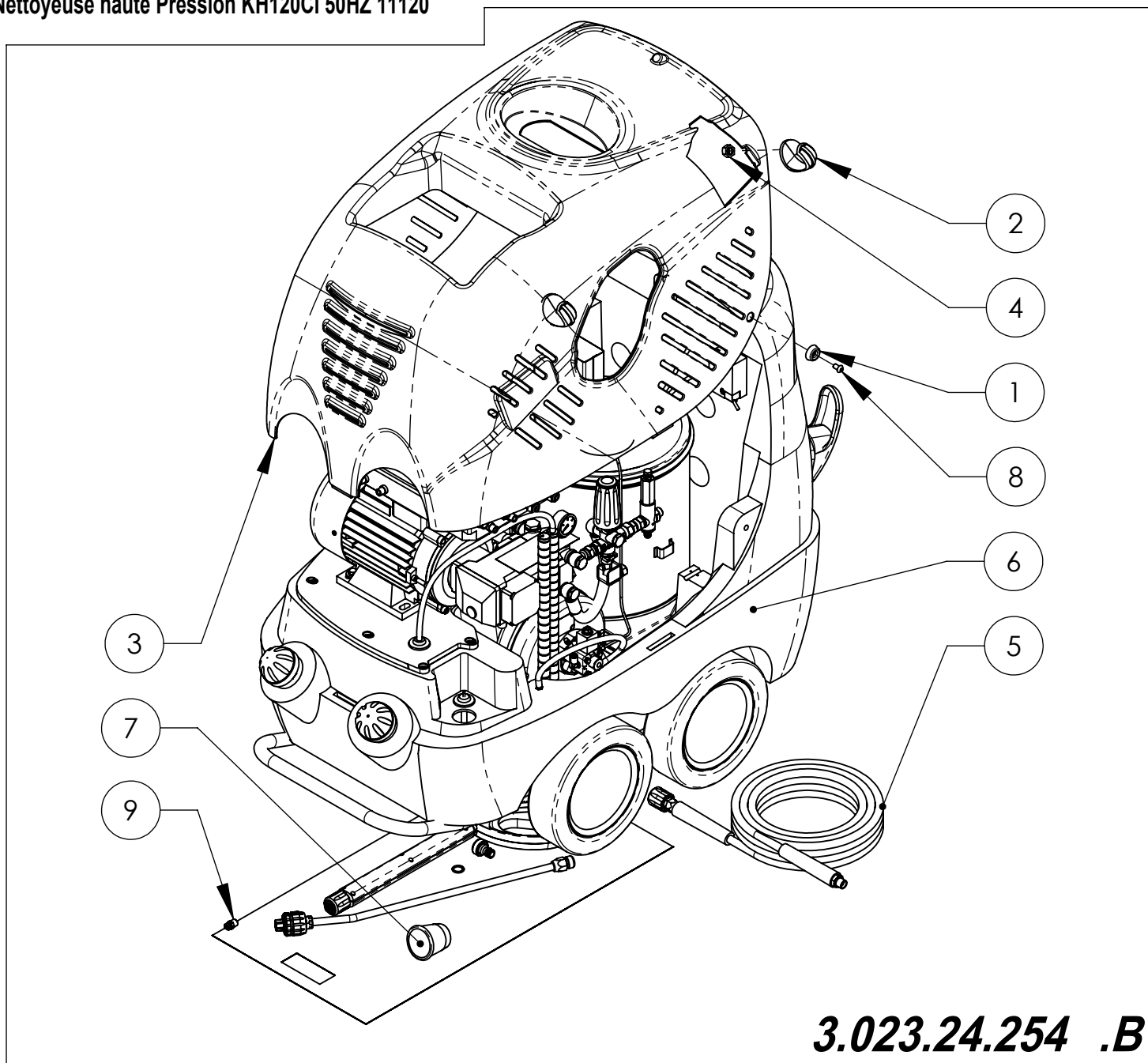
Idropulitrice KH120CI 50HZ 11120

Hochdruck Reiniger KH120CI 50HZ 11120

High Pressure Washer KH120CI 50HZ 11120

Hidrolimpiadora KH120CI 50HZ 11120

Nettoyeuse haute Pression KH120CI 50HZ 11120

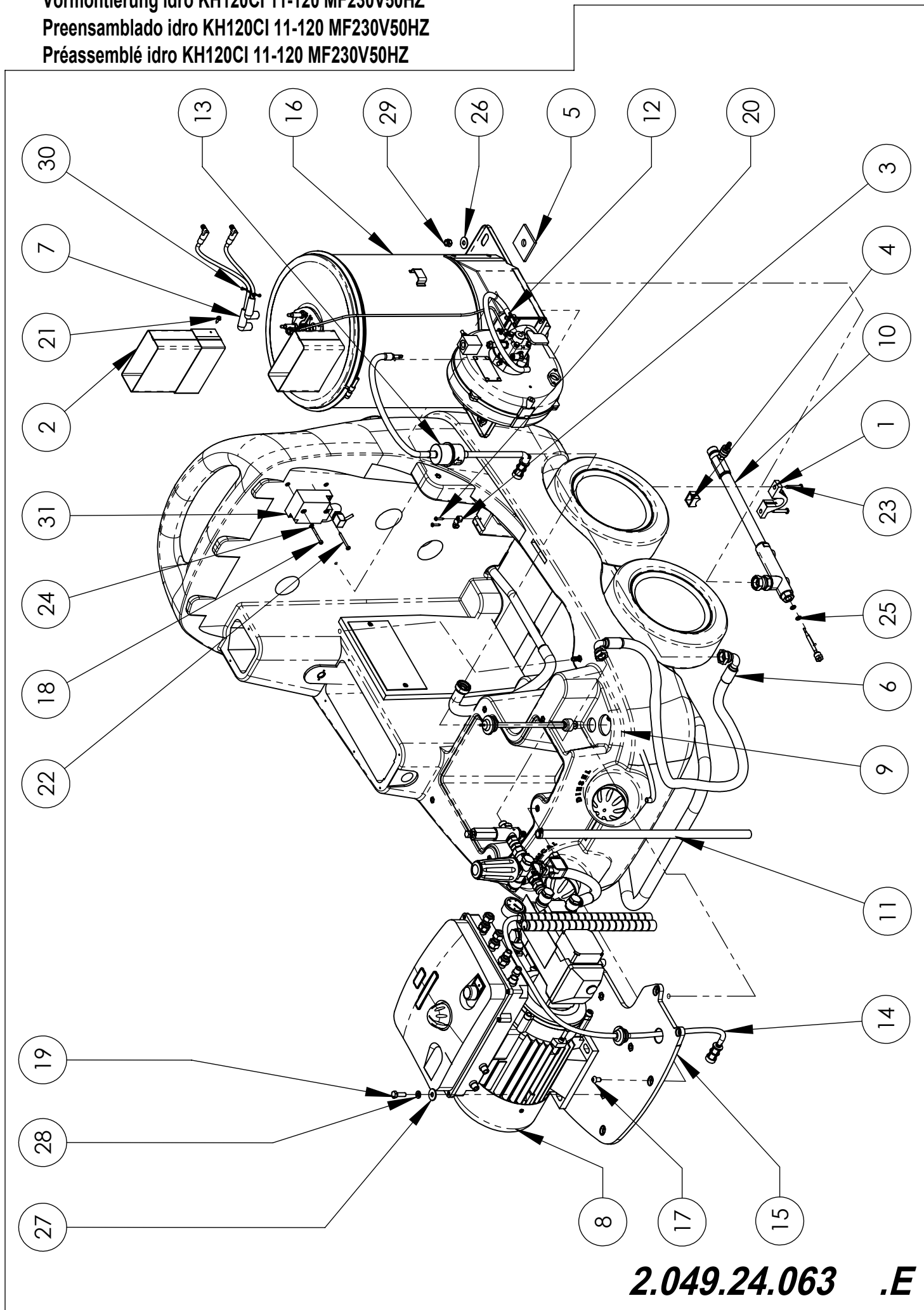


**3.023.24.254 .B**

3	1	1.014.14.048	Scocca rossa	Red cover	Rot abdeckung	Tapa rojo	Copot rouge
3	1	1.014.14.049	Scocca gialla	Yellow cover	Gelb abdeckung	Tapa jaune	Copot amarillo
3	1	1.014.14.052	Scocca verde	Green cover	Grün abdeckung	Tapa verde	Copot vert

Pos.	Q.tà	Cod.	ITALIANO	ENGLISH	DEUTSCH	ESPAÑOL	FRANCAIS
1	2	1.003.04.016	Rondella ø30	Washer ø30	Unterlegscheibe ø30	Arandela ø30	Rondelle ø30
2	2	1.011.04.049	Supporto porta lancia G1/4	lance holder G1/4	Lanzehalter G1/4	Sostenedor de la lanza G1/4	Support de lance G1/4
3	1	1.014.14.046	Scocca Blu	Blue Cover	Blauer Abdeckung	Tapa Azul	Copot Bleus
4	2	1.015.32.008	Ghiera G1/4"	Ferrule G1/4"	Zwinge G1/4"	Abrazadera G1/4"	Embout G1/4"
5	1	2.006.24.039	Tubo 5/16 400Bar L=1600	Pipe 5/16 400Bar L=1600	Rohr 5/16 400Bar L=1600	Tubo 5/16 400Bar L=1600	Tuyau 5/16 400Bar L=1600
6	1	2.049.24.063	Idro Premontato KH120CI 11-120 MF230V50HZ	Preassembled idro KH120CI 11-120 MF230V50HZ	Vormontierung idro KH120CI 11-120 MF230V50HZ	Preensamblado idro KH120CI 11-120 MF230V50HZ	Préassemblé idro KH120CI 11-120 MF230V50HZ
7	1	3.045.04.002	Kit accessori K/PH2/3/3050	Accessories kit K/PH2/3/3050	Kit Zubehör K/PH2/3/3050	Kit accesorios K/PH2/3/3050	Kit accessoires K/PH2/3/3050
8	2	4.002.14.021	Vite M8x14 ISO7380	Screw M8x14 ISO7380	Schrauben M8x14 ISO7380	Tornillo M8x14 ISO7380	Vis M8x14 ISO7380
9	1	4.027.02.007	Ugello 1505	Nozzle 1505	Duse 1505	Boquilla 1505	Buse 1505

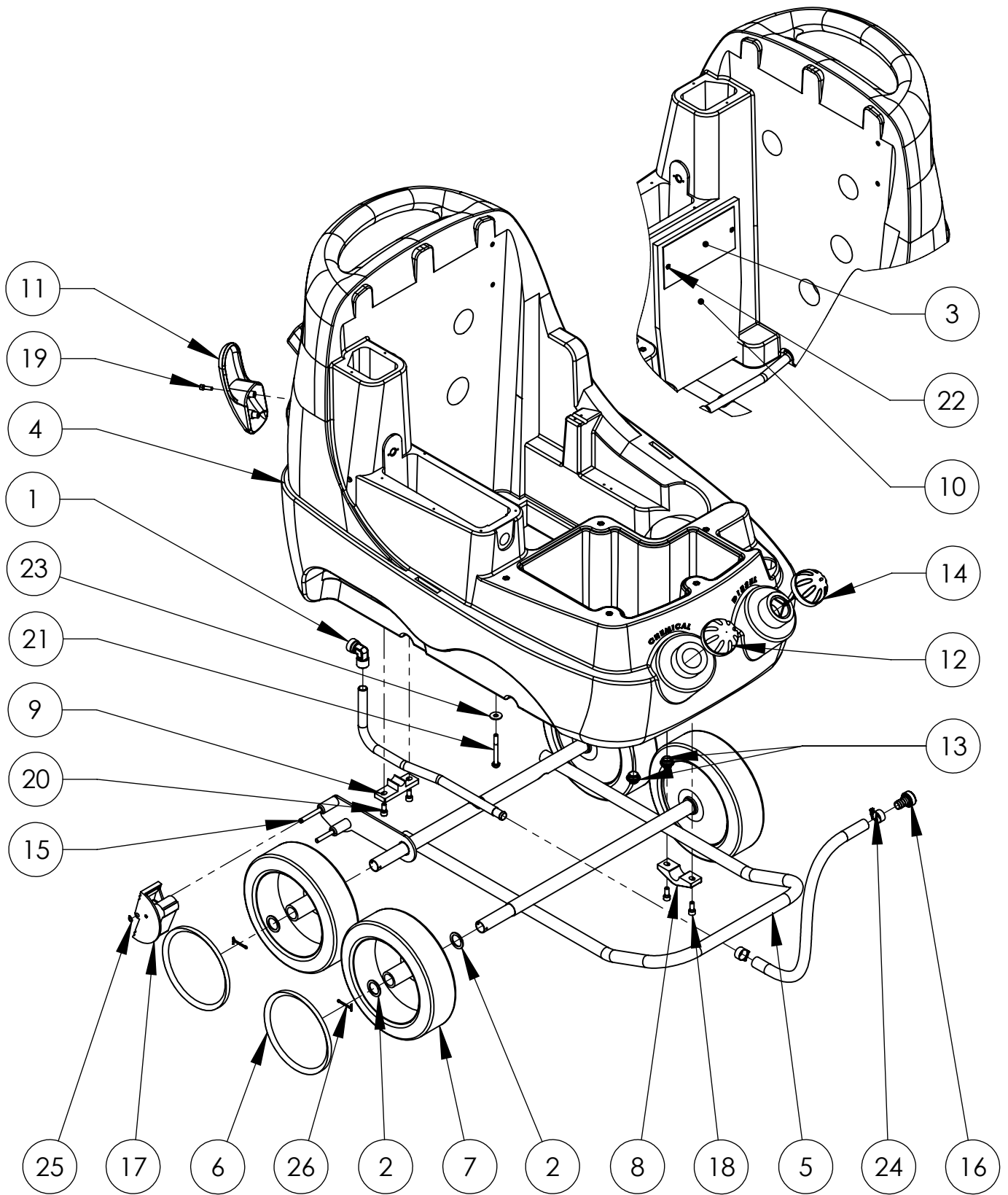
Idro Premontato KH120CI 11-120 MF230V50HZ  
 Preassembled idro KH120CI 11-120 MF230V50HZ  
 Vormontierung idro KH120CI 11-120 MF230V50HZ  
 Preensamblado idro KH120CI 11-120 MF230V50HZ  
 Préassemblé idro KH120CI 11-120 MF230V50HZ



**2.049.24.063 .E**

<b>Pos.</b>	<b>Manuale Ricambi/Quantità</b>	<b>Cod.</b>	<b>ITALIANO</b>	<b>ENGLISH</b>	<b>DEUTSCH</b>	<b>ESPAÑOL</b>	<b>FRANCAIS</b>
1	1	1.011.04.043	Supporto	Support	Halter	Soporte	Support
2	1	1.018.04.023	Prolunga KH120CI-3080	Extension KH120CI-3080	Verlängerung KH120CI-3080	Prolongacion KH120CI-3080	Rallonge KH120CI-3080
3	1	1.045.04.006	Fascetta ø11.3	Clamp ø11.3	Klemme ø11.3	Faja ø11.3	Petit bande ø11.3
4	1	1.081.04.001	Forcella	Fork	Gabel	Horquilla	Fourche
5	4	1.094.04.016	Isolante termico 55x55	Thermal insulator	Waermeschutzstoff	Aislador termal	Isolateur thermique
6	1	2.006.24.065	Tubo TUBO 3\8 400B L950 3\8-1\2	Pipe TUBO 3\8 400B L950 3\8-1\2	Rohr TUBO 3\8 400B L950 3\8-1\2	Tubo TUBO 3\8 400B L950 3\8-1\2	Tuyau TUBO 3\8 400B L950 3\8-1\2
7	2	2.020.04.033	Cavo elettrodi	Electrodes cable	Elektrode kabel	Cable electrodos	Cable electrodos
8	1	2.034.04.042	Motopompa + Quadro elettrico KH120CI	Motorpump + Electric pannel KH120CI	Motorpumpe + Schalttafel KH120CI	Motobomba + Cuadro eléctrico KH120CI	Motopompe + Cadre électrique KH120CI
9	1	2.040.04.014	Serbatoio premontato KH120CI	Preassembled tank KH120CI	Vormontierung tank KH120CI	Preensamblado tanque KH120CI	Préassemblé réservoir KH120CI
10	1	2.048.04.006	Collettore KH120CI DBP	Collector KH120CI DBP	Kollektor KH120CI DBP	Colector KH120CI DBP	Collecteur KH120CI DBP
11	1	2.074.04.009	Tubo ø12xø17x540	Pipe ø12xø17x540	Rohr ø12xø17x540	Tubo ø12xø17x540	Tuyau ø12xø17x540
12	1	2.074.04.010	Tubo ø6xø9 L450	Pipe ø6xø9 L450	Rohr ø6xø9 L450	Tubo ø6xø9 L450	Tuyau ø6xø9 L450
13	1	2.074.04.011	Tubo aspirazione gasolio KH120CI	Gas oil suction pipe KH120CI	Saugrohr gas oel KH120CI	Tubo de aspiración gasoleo KH120CI	Tube d'aspiration gas oil KH120CI
14	1	2.074.04.016	Tubo aspirazione L1500	Suction pipe L1500	Saugrohr L1500	Tubo de aspiración L1500	Tube d'aspiration L1500
15	1	2.105.04.002	Piastra MEC100 KH120CI	Plate MEC100 KH120CI	Platte MEC100 KH120CI	Placa MEC100 KH120CI	Plat MEC100 KH120CI
16	1	3.026.04.038	Caldia 11-15L 230V MF 50HZ H430-KH120CI	Boiler 11-15L 230V MF 50HZ H430-KH120CI	Kessel 11-15L 230V MF 50HZ H430-KH120CI	Caldera 11-15L 230V MF 50HZ H430-KH120CI	Chaudière 11-15L 230V MF 50HZ H430-KH120CI
17	5	4.002.14.021	Vite M8x14 ISO7380	Screw M8x14 ISO7380	Schrauben M8x14 ISO7380	Tornillo M8x14 ISO7380	Vis M8x14 ISO7380
18	1	4.002.14.030	Vite M4x40 UNI 5931	Screw M4x40 UNI 5931	Schrauben M4x40 UNI 5931	Tornillo M4x40 UNI 5931	Vis M4x40 UNI 5931
19	1	4.002.44.014	Vite M8x25 UNI5739	Screw M8x25 UNI5739	Schrauben M8x25 UNI5739	Tornillo M8x25 UNI5739	Vis M8x25 UNI5739
20	2	4.002.92.001	Vite autofilettante 3.5x19	Self-tapping Screw 3.5x19	Selbschneidendeschraube 3.5x19	Tornillo autoblocante 3.5x19	Vis autofiletant 3.5x19
21	1	4.002.94.017	Vite autofilettante 3.9x13	Self-tapping Screw 3.9x13	Selbschneidendeschraube 3.9x13	Tornillo autoblocante 3.9x13	Vis autofiletant 3.9x13
22	1	4.002.94.019	Vite autofilettante 3.9x45 AB D7982	Self-tapping Screw 3.9x45 AB D7982	Selbschneidendeschraube 3.9x45 AB D7982	Tornillo autoblocante 3.9x45 AB D7982	Vis autofiletant 3.9x45 AB D7982
23	2	4.002.94.027	Vite autofilettante 6.3X25 ISO7049	Self-tapping Screw 6.3X25 ISO7049	Selbschneidendeschraube 6.3X25 ISO7049	Tornillo autoblocante 6.3X25 ISO7049	Autofiletant 6.3X25 ISO7049
24	1	4.008.04.001	Rondella M4 UNI6592	Washer M4 UNI6592	Unterlegsscheibe M4 UNI6592	Arandela M4 UNI6592	Rondelle M4 UNI6592
25	2	4.008.14.005	Rondella ø11.5x7.1x1	Washer ø11.5x7.1x1	Unterlegscheibe ø11.5x7.1x1	Arandela de cobre ø11.5x7.1x1	Rondelle ø11.5x7.1x1
26	2	4.008.22.001	Rondella M8 UNI6593	Washer M8 UNI6593	Unterlegscheibe M8 UNI6593	Arandela M8 UNI6593	Rondelle M8 UNI6593
27	1	4.008.24.002	Rondella ø8.5x24x2.5 6593	Washer ø8.5x24x2.5 6593	Unterlegscheibe ø8.5x24x2.5 6593	Arandela ø8.5x24x2.5 6593	Rondelle ø8.5x24x2.5 6593
28	1	4.008.54.004	Rondella di sicurezza UNI1751 M8	Safety washer UNI1751 M8	Sicherheits Scheibe UNI1751 M8	Arandela de seguridad UNI1751 M8	Rondelle de sûreté UNI1751 M8
29	2	4.009.14.001	Dado M8 UNI7473	Nut M8 UNI7473	Mutter M8 UNI7473	Dado M8 UNI7473	Ecrou M8 UNI7473
30	1	4.022.04.016	Fascetta 2x ø5.1/ø7.6	Clamp 2x ø5.1/ø7.6	Klemme 2x ø5.1/ø7.6	Faja 2x ø5.1/ø7.6	Petit bande 2x ø5.1/ø7.6
31	1	4.030.04.010	Trasformatore 20mA 230V	Transformer 20mA 230V	Stromwandler 20mA 230V	Transformador 20mA 230V	Transformateur 20mA 230V

Serbatoio premontato KH120CI  
 Preassembled tank KH120CI  
 Preensamblado tanque KH120CI  
 Vormontierung tank KH120CI  
 Préassemblé réservoir KH120CI



**2.040.04.014 .F**

<b>Pos.</b>	<b>Q.à</b>	<b>Cod.</b>	<b>ITALIANO</b>	<b>ENGLISH</b>	<b>DEUTSCH</b>	<b>ESPAÑOL</b>	<b>FRANCAIS</b>
1	1	1.001.14.013	Raccordo	Connection	Leiste	Filete	Filet
2	7	1.003.04.006	Rondella ø25.5xø35x2	Washer 25.5x35x2	Unterlegscheibe 25.5x35x2	Arandela 25.5x35x2	Rondelle 25.5x35x2
3	1	1.008.04.035	Piastra	Plate	Platte	Placa	Plat
4	1	1.033.04.016	Serbatoio KH120CI	Tank KH120CI	Tank KH120CI	Tanque KH120CI	Reservoir KH120CI
5	1	1.044.44.064	Tubo aspirazione ø16 L=650	Suction pipe ø16 L=650	Saugrohr ø16 L=650	Tubo de aspiración ø16 L=650	Tube d'aspiration ø16 L=650
6	2	1.085.04.015	Coprimozzo	Hub Cap	Nabe Haus	Casquillo del cubo	Enjoliveur de roue
7	4	1.086.04.018	Ruota ø260 - ø25	Wheel ø260 - ø25	Rad ø260 - ø25	Rueda ø260 - ø25	Roue ø260 - ø25
8	4	1.089.04.023	Staffa	Stirrup	Buegel	Estribo	Étrier
9	1	1.089.04.034	Staffa	Stirrup	Buegel	Estribo	Étrier
10	1	1.094.04.023	Isolante termico (200x370)	Thermal insulator (200x370)	Waermeschutzstoff (200x370)	Aislador termal (200x370)	Isolateur thermique (200x370)
11	2	1.126.04.001	Gancio	Hook	Haken	Gancho	Crochet
12	1	2.013.04.013	Tappo grigio ø73	Grey cap ø73	Graue Kappe ø73	Casquillo Gris ø73	Couvercle gris ø73
13	2	2.013.04.020	Tappo 1/2 Gas	Plug 1/2 Gas	Deckel 1/2 Gas	Tapón 1/2 Gas	Bouchon 1/2 Gas
14	1	2.013.04.023	Tappo rosso	Red cap	Rote Kappe	Casquillo Rojo	Couvercle rouge
15	1	2.015.04.016	Telaio macchina KH120CI	Machine frame KH120CI	Maschinenrahmen KH120CI	Estructura máquina KH120CI	Chassis de la machine KH120CI
16	1	2.021.02.003	Attacco rapido	Quick coupling	Schnelle Kupplung	Ataque rapido	Connection rapide
17	1	2.052.04.002	Freno	Brake	Bremse	Freno	Frein
18	8	4.002.14.005	Vite M8x20 UNI5931	Screw M8x20 UNI5931	Schrauben M8x20 UNI5931	Tornillo M8x20 UNI5931	Vis M8x20 UNI5931
19	4	4.002.14.020	Vite M6x20 UNI5931	Screw M6x20 UNI5931	Schrauben M6x20 UNI5931	Tornillo M6x20 UNI5931	Vis M6x20 UNI5931
20	2	4.002.14.026	Vite M8X18 UNI 5931	Screw M8X18 UNI 5931	Schrauben M8X18 UNI 5931	Tornillo M8X18 UNI 5931	Vis M8X18 UNI 5931
21	2	4.002.44.009	Vite M8x70 UNI5737	Screw M8x70 UNI5737	Schrauben M8x70 UNI5737	Tornillo M8x70 UNI5737	Vis M8x70 UNI5737
22	2	4.002.94.030	Vite autofilettante UNI 6955 5x25 ZEB	Self-tapping Screw UNI 6955 5x25 ZEB	Selbschneidendeschraube UNI 6955 5x25 ZEB	Tornillo autoblocante UNI 6955 5x25 ZEB	Vis autofiletant UNI 6955 5x25 ZEB
23	2	4.008.24.002	Rondella ø8.5x24x2.5 6593	Washer ø8.5x24x2.5 6593	Unterlegscheibe ø8.5x24x2.5 6593	Arandela ø8.5x24x2.5 6593	Rondelle ø8.5x24x2.5 6593
24	2	4.022.04.020	Fascetta Ø16-27 H12 AISI304	Clamp Ø16-27 H12 AISI304	Klemme Ø16-27 H12 AISI304	Faja Ø16-27 H12 AISI304	Petit bande Ø16-27 H12 AISI304
25	1	4.025.04.009	Seeger A8 UNI 7435	Seeger A8 UNI 7435	Seeger A8 UNI 7435	Seeger A8 UNI 7435	Seeger A8 UNI 7435
26	4	4.044.04.004	Copiglia ø3.2x36 UNI1336	Spit-pin ø3.2x36 UNI1336	Splint ø3.2x36 UNI1336	Chaveta ø3.2x36 UNI1336	Goupille ø3.2x36 UNI1336

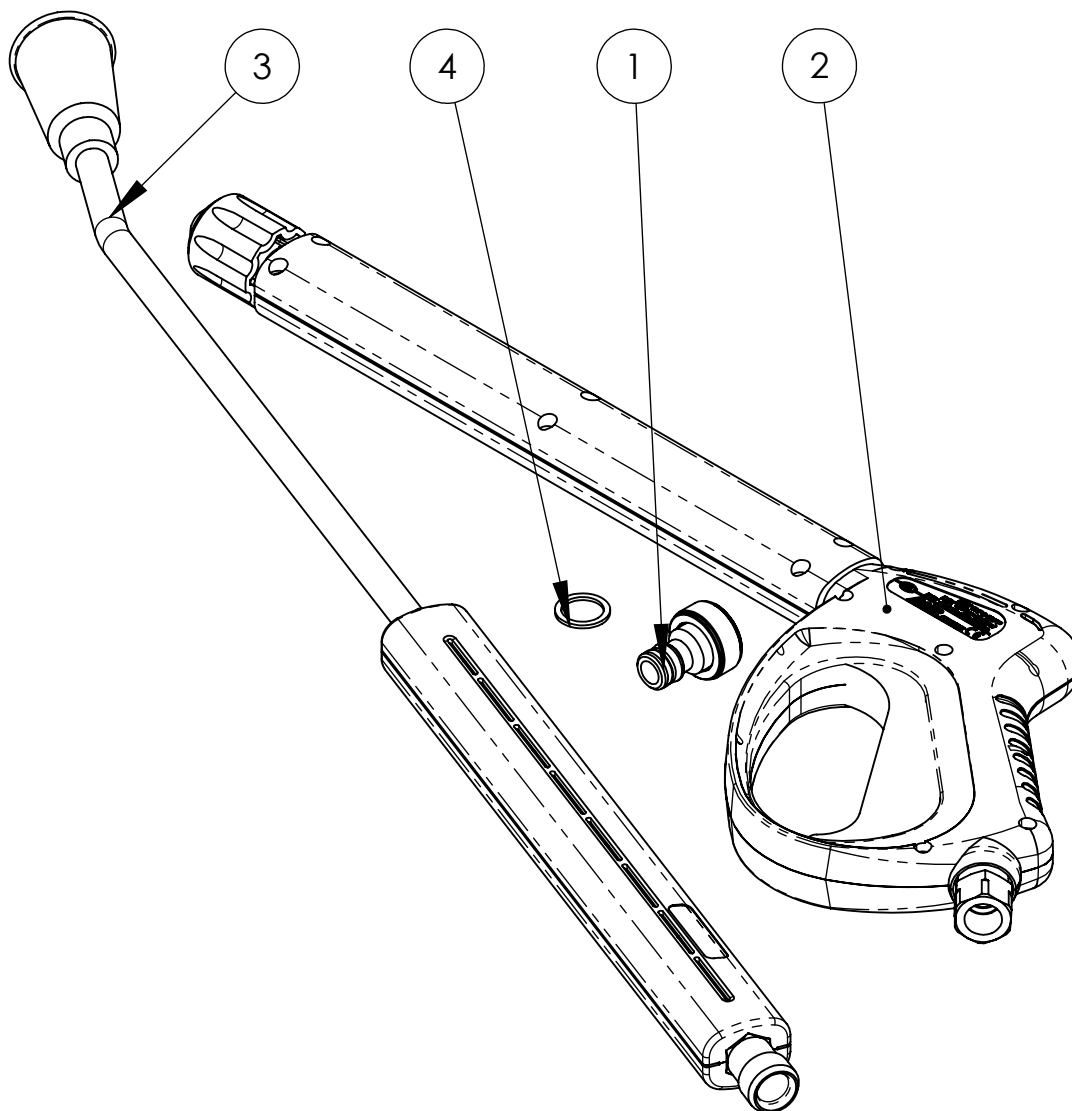
Kit accessori KH120CI/4000

Accessories kit KH120CI

Kit accessoires KH120CI

Kit Zubehör KH120CI

Kit accessorios KH120CI



**3.045.04.003 .A**

Pos.	Q.tà	Cod.	ITALIANO	ENGLISH	DEUTSCH	ESPAÑOL	FRANCAIS
1	1	2.021.02.001	Innesto rapido	Quick coupling	Schnelle kupplung	Enchufe rapido	Raccord rapid
2	1	3.021.22.003	Pistola + Impugnatura "LASER" G3/8" F Sweevel	Trigger Gun + Grip "LASER" G3/8" F Sweevel	Pistole + Handgriff "LASER" G3/8" F Sweevel	Pistola + Empunadura "LASER" G3/8" F Sweevel	Pistolet + Branche "LASER" G3/8" F Sweevel
3	1	3.022.12.034	Lancia SC10 L=700 M22x1.5	Lance SC10 L=700 M22x1.5	Lanze SC10 L=700 M22x1.5	Lanza SC10 L=700 M22x1.5	Lance SC10 L=700 M22x1.5
4	1	4.008.12.001	Rondella Rame G3/8	Copper washer G3/8	Kupferunterlegsscheibe G3/8	Arandela de cobre G3/8	Rondelle cuivre G3/8



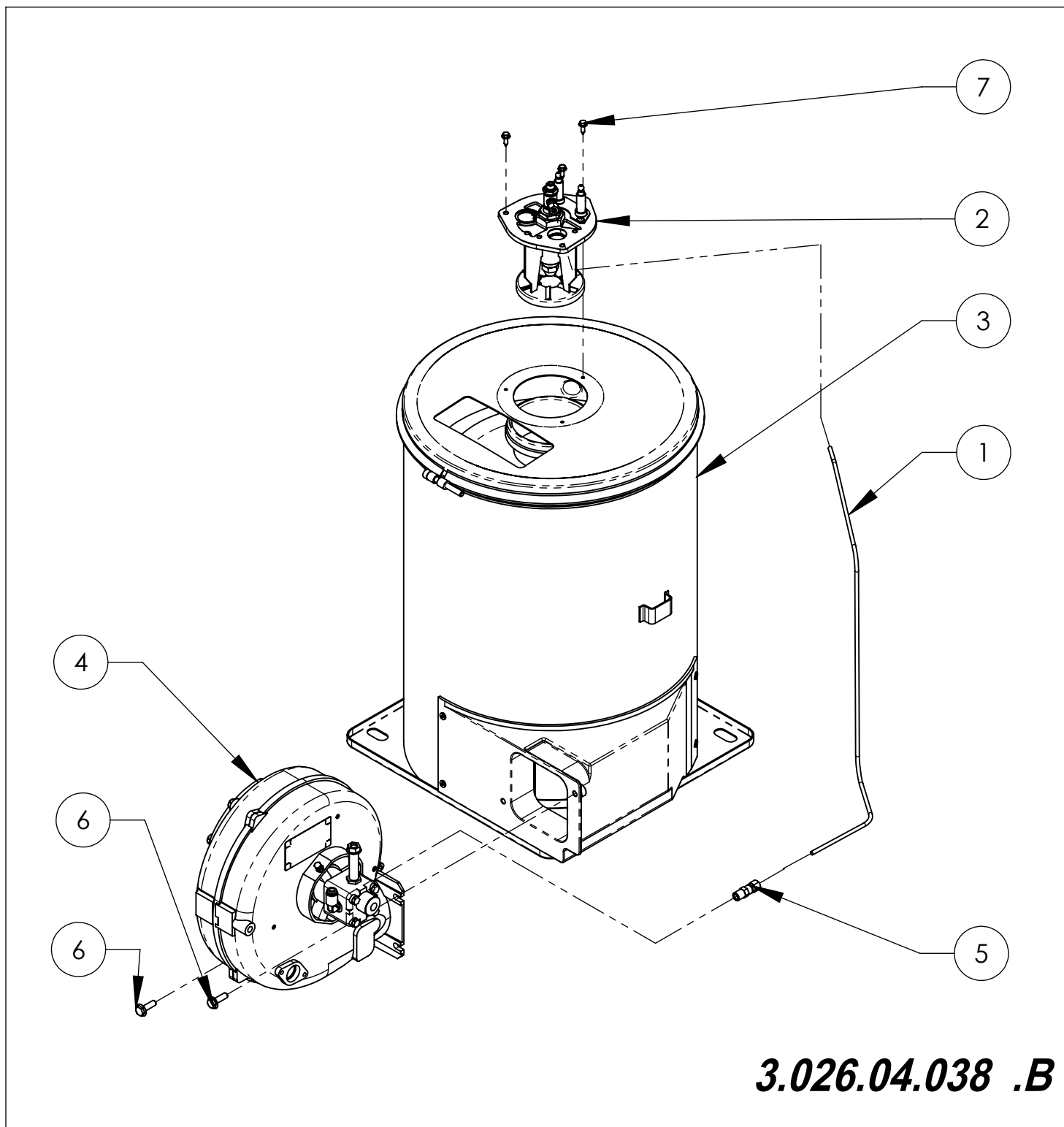
Caldaia 11-15L 230V MF 50HZ H430-KH120CI

Boiler 11-15L 230V MF 50HZ H430-KH120CI

Chaudière 11-15L 230V MF 50HZ H430-KH120CI

Kessel 11-15L 230V MF 50HZ H430-KH120CI

Caldera 11-15L 230V MF 50HZ H430-KH120CI



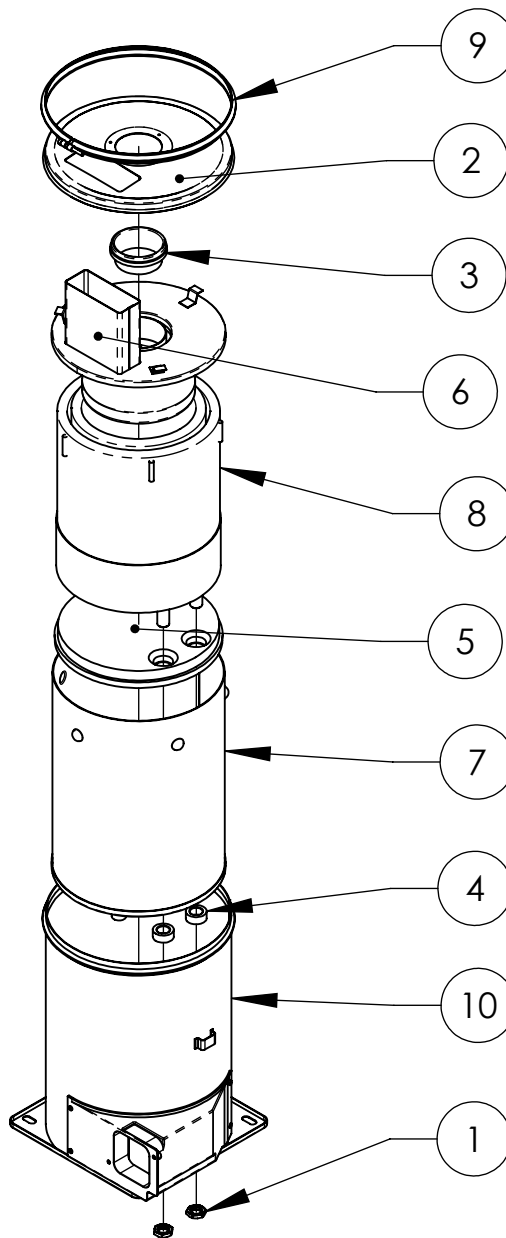
**3.026.04.038 .B**

Pos.	Q.tà	Cod.	ITALIANO	ENGLISH	DEUTSCH	ESPAÑOL	FRANCAIS
1	1	1.044.54.014	Tubo di rame MH3001-3061	Branch tube MH3001-3061	Niederlassung Schlauch MH3001-3061	Tubo del rama MH3001-3061	tube de cuivre MH3001-3061
2	1	2.012.04.008	Coperchio elettrodi UG 1.25	Electrodes cover UG 1.25	Elektrodendeckel UG 1.25	Tapón electrodos UG 1.25	Coouvercle électrodes UG 1.25
3	1	2.041.04.021	Caldaia 15L	Boiler 15L	Kessel 15L	Caldera 15L	Chaudière 15L
4	1	3.038.02.007	Convogliatore 230V 50Hz SX KH120CI	Conveyor 230V 50Hz SX KH120CI	Foerderer 230V 50Hz SX KH120CI	Convoyador 230V 50Hz SX KH120CI	Convoyeur 230V 50Hz SX KH120CI
5	1	3.050.04.001	Raccordo	Connection	Leiste	Filete	Filet
6	2	4.002.92.011	Vite M6x20 UNI 8111	Screw M6x20 UNI 8111	Schrauben M6x20 UNI 8111	Tornillo M6x20 UNI 8111	Vis M6x20 UNI 8111
7	3	4.002.94.017	Vite autofilettante 3.9x13	Self-tapping Screw 3.9x13	Selbschneidendeschraube 3.9x13	Tornillo autoblocante 3.9x13	Vis autofiletant 3.9x13

# Caldaia 15L

Boiler 15L  
Chaudière 15L

Kessel 15L  
Caldera 15L



**2.041.04.021 .C**

Pos.	Q.tà	Cod.	ITALIANO	ENGLISH	DEUTSCH	ESPAÑOL	FRANCAIS
1	2	1.015.24.002	Ghiera	Ferrule	Zwinge	Abrazadera	Embout
2	1	1.054.04.006	Coperchio	Cover	Deckel	Tapa	Couvercle
3	1	1.056.04.024	Boccaglio h40	Pipe union h40	Stutzen h40	Boca h40	Mamelon h40
4	2	1.060.04.027	Distanziale 15mm	Spacer 15mm	Distanzstueck 15mm	Distanciador 15mm	Entretoise 15mm
5	1	1.094.04.005	Isolante termico 20-25L	Thermal insulator 20-25L	Waermeschutzstoff 20-25L	Aislador termal 20-25L	Isolateur termique 20-25L
6	1	2.012.04.013	Coperchio W 20L	Cover W 20L	Deckel W 20L	Tapa W 20L	Couvercle W 20L
7	1	2.023.04.024	Camicia	Jacket	Mantel	Camisa	Chemise
8	1	2.029.04.014	Serpentina 15L	Coil 15L	Schlange 15L	Serpentin 15L	Serpentin 15L
9	1	2.056.04.001	Fascetta ø317	Clamp ø317	Klemme ø317	Faja ø317	Petit bande ø317
10	1	2.111.04.006	Camicia esterna PH	External jacket PH	Äusserer Mantel PH	Camisa externa PH	Chemise externe PH

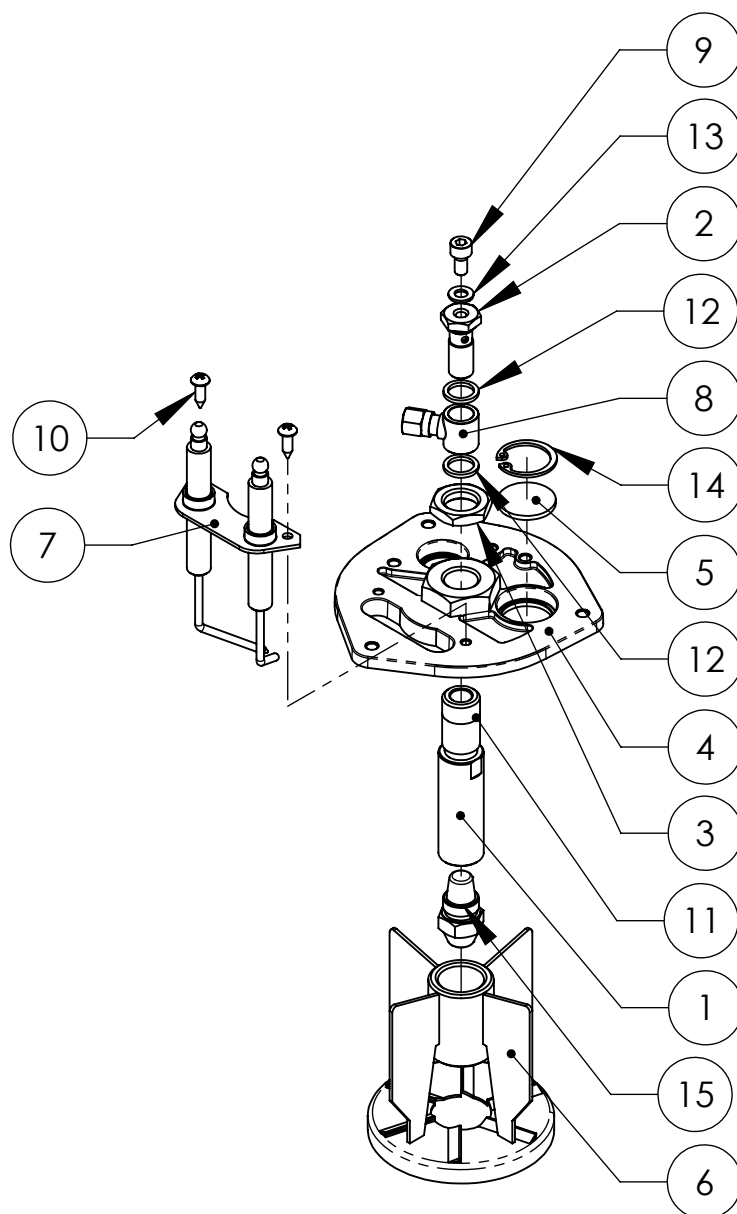
Coperchio elettrodi UG 1.25

Electrodes cover UG 1.25

Couvercle électrodes UG 1.25

Elektrodendeckel UG 1.25

Tapón electrodos UG 1.25



**2.012.04.008 .G**

Pos.	Q.ta	Cod.	ITALIANO	ENGLISH	DEUTSCH	ESPAÑOL	FRANCAIS
1	1	1.001.04.006	Raccordo 9/19 - G1/8	Connection 9/19 - G1/8	Leiste 9/19 - G1/8	Filete 9/19 - G1/8	Filet 9/19 - G1/8
2	1	1.012.14.012	Tappo FORATO G1/8+CONTR.PRESS.M5	Cap FORATO G1/8+CONTR.PRESS.M5	Deckel FORATO G1/8+CONTR.PRESS.M5	Tapón FORATO G1/8+CONTR.PRESS.M5	Bouchon FORATO G1/8+CONTR.PRESS.M5
3	1	1.015.24.003	Ghiera	Ferrule	Zwinge	Abrazadera	Embout
4	1	1.074.04.011	Flangia	Flange	Flansch	Borde	Bride
5	1	1.102.04.001	Vetrino	Glass	Glass	Vidrio	Vèrre
6	1	2.009.04.002	Deflettore Work	Deflector Work	Deflektor Work	Deflector Work	Défecteur Work
7	1	2.032.04.004	Elettrodi	Electrodes	Elektrode	Electrodos	Electrodes
8	1	3.050.34.001	Raccordo	Connection	Leiste	Filete	Filet
9	1	4.002.14.022	Vite M5x10 UNI5931	Screw M5x10 UNI5931	Schrauben M5x10 UNI5931	Tornillo M5x10 UNI5931	Vis M5x10 UNI5931
10	2	4.002.94.005	Vite autofilettante 3.9x13	Self-tapping Screw 3.9x13	Gewindeschneidschraube 3.9x13	Tornillo Self-tapping 3.9x13	Vies Autofilettante 3.9x13
11	1	4.005.14.004	OR 0130-1	O-ring 0130-1	O-ring 0130-1	OR 0130-1	Joint torique 0130-1
12	2	4.008.12.005	Rondella Rame G1/8	Copper washer G1/8	Kupferunterlegsscheibe G1/8	Arandelade cobre G1/8	Rondelle cuivre G1/8
13	1	4.008.14.003	Rondella Rame M5	Copper washer M5	Kupferunterlegsscheibe M5	Arandela de cobre M5	Rondelle cuivre M5
14	1	4.025.04.002	Seeger	Seeger	Seeger	Seeger	Seeger
15	1	4.027.14.005	Ugello 1.25 (60°S)	Nozzle 1.25 (60°S)	Duse 1.25 (60°S)	Boquilla 1.25 (60°S)	Buse 1.25 (60°S)

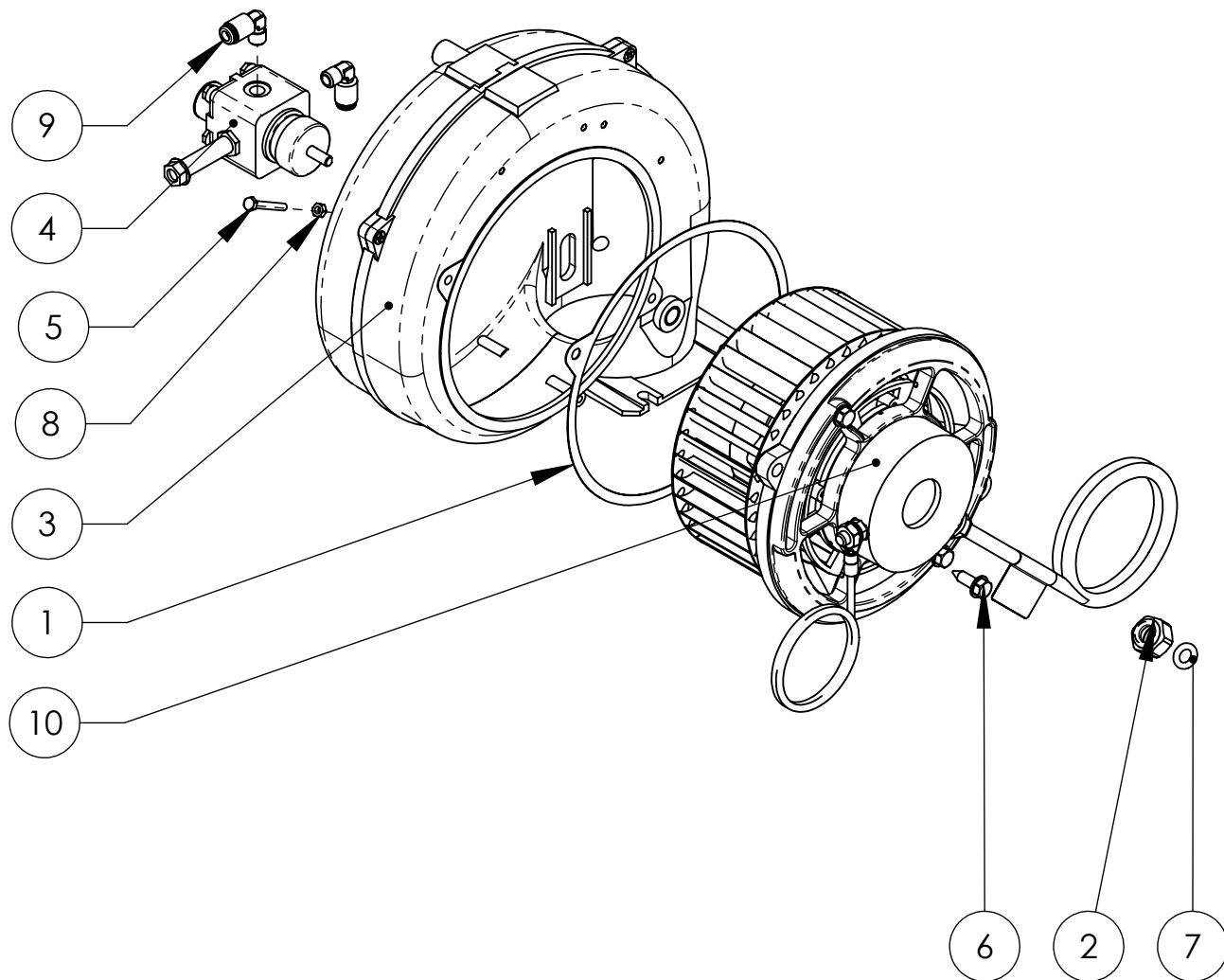
# Convogliatore 230V 50Hz SX KH120CI

Conveyor 230V 50Hz SX KH120CI

Foerderer 230V 50Hz SX KH120CI

Convoyeur 230V 50Hz SX KH120CI

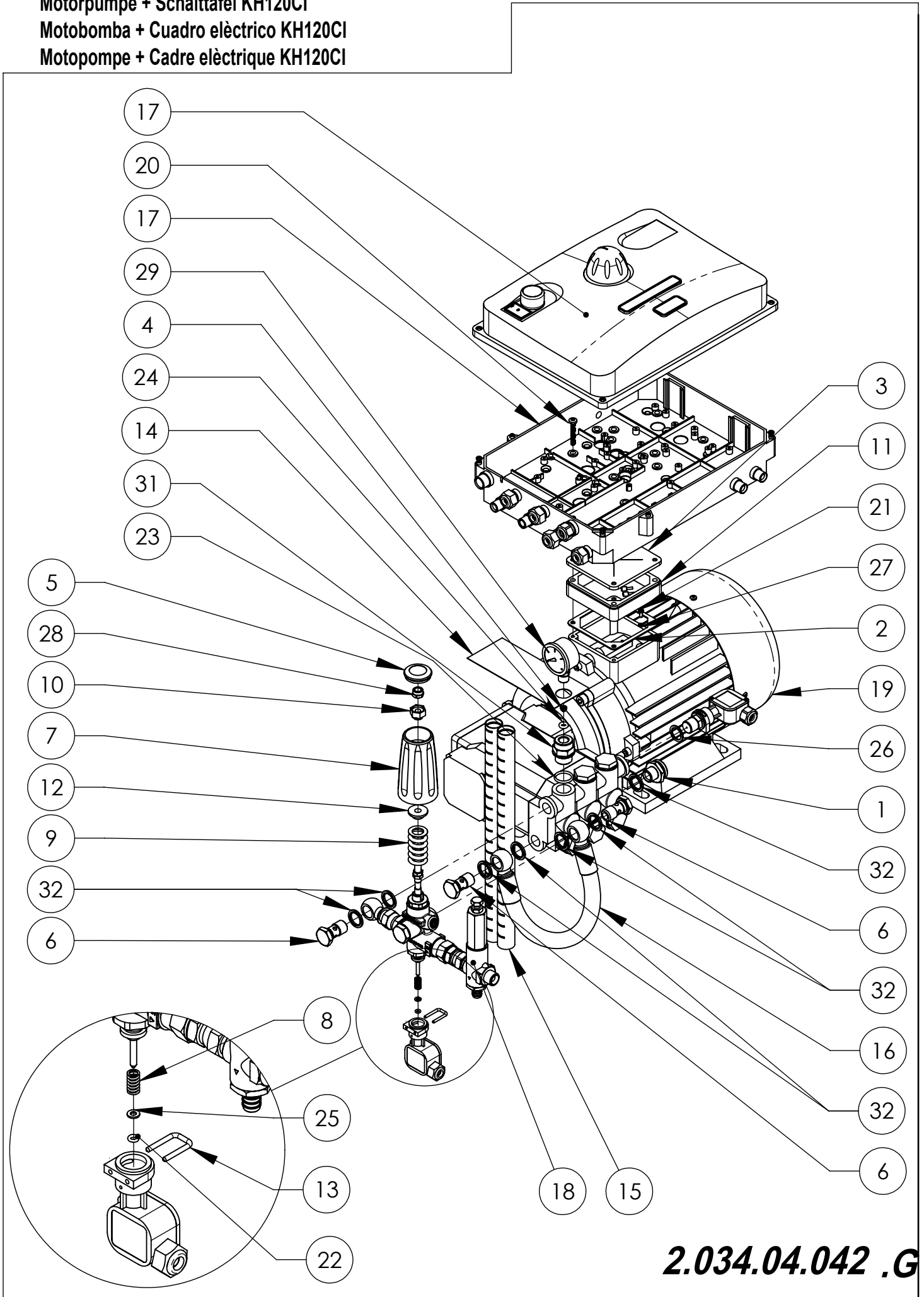
Convoyador 230V 50Hz SX KH120CI



**3.038.02.007 .K**

Pos.	Q.tà	Cod.	ITALIANO	ENGLISH	DEUTSCH	ESPAÑOL	FRANCAIS
1	1	1.006.22.002	Guarnizione	Gasket	Dichtung	Guarnición	Garniture
2	1	1.015.32.011	Ghiera	Ferrule	Zwinge	Abrazadera	Embout
3	1	2.017.22.001	Carter Montato	Assembled Guard	Montiertes Gehäuse	Ensamblado Càrter	Carter assemblé
4	1	3.015.24.006	Pompa gasolio	Diesel pump	Heizölpumpe	Bomba gasóleo	Pompe gasoil
5	3	4.002.44.012	Vite M4x30 UNI5739	Screw M4x30 UNI5739	Schrauben M4x30 UNI5739	Tornillo M4x30 UNI5739	Vis M4x30 UNI5739
6	2	4.002.94.012	Vite autofilettante 6.3x20 AB 6950	Self-tapping Screw 6.3x20 AB 6950	Selbschneidendeschraube 6.3x20 AB 6950	Tornillo autobloccante 6.3x20 AB 6950	Vis autofiletant 6.3x20 AB 6950
7	1	4.005.22.028	OR 0080-35	O-ring 0080-35	O-ring 0080-35	OR 0080-35	Joint torique ORM 0080-35
8	3	4.009.02.006	Dado M4 UNI5588	Nut M4 UNI5588	Mutter M4 UNI5588	Dado M4 UNI5588	Ecrou M4 UNI5588
9	2	4.012.04.013	Raccordo a L G1/4	L Connection G1/4	Leiste L G1/4	Filete L G1/4	Filet L G1/4
10	1	9.014.02.006	Motore Elettrico 230V 50Hz	Electric Motor 230V 50Hz	Elektromotor 230V 50Hz	Motor Eléctrico 230V 50Hz	Moteur électrique 230V 50Hz

**Motopompa + Quadro elettrico KH120CI**  
**Motorpump + Electric pannel KH120CI**  
**Motorpumpe + Schalttafel KH120CI**  
**Motobomba + Cuadro elèctrico KH120CI**  
**Motopompe + Cadre elèctrique KH120CI**



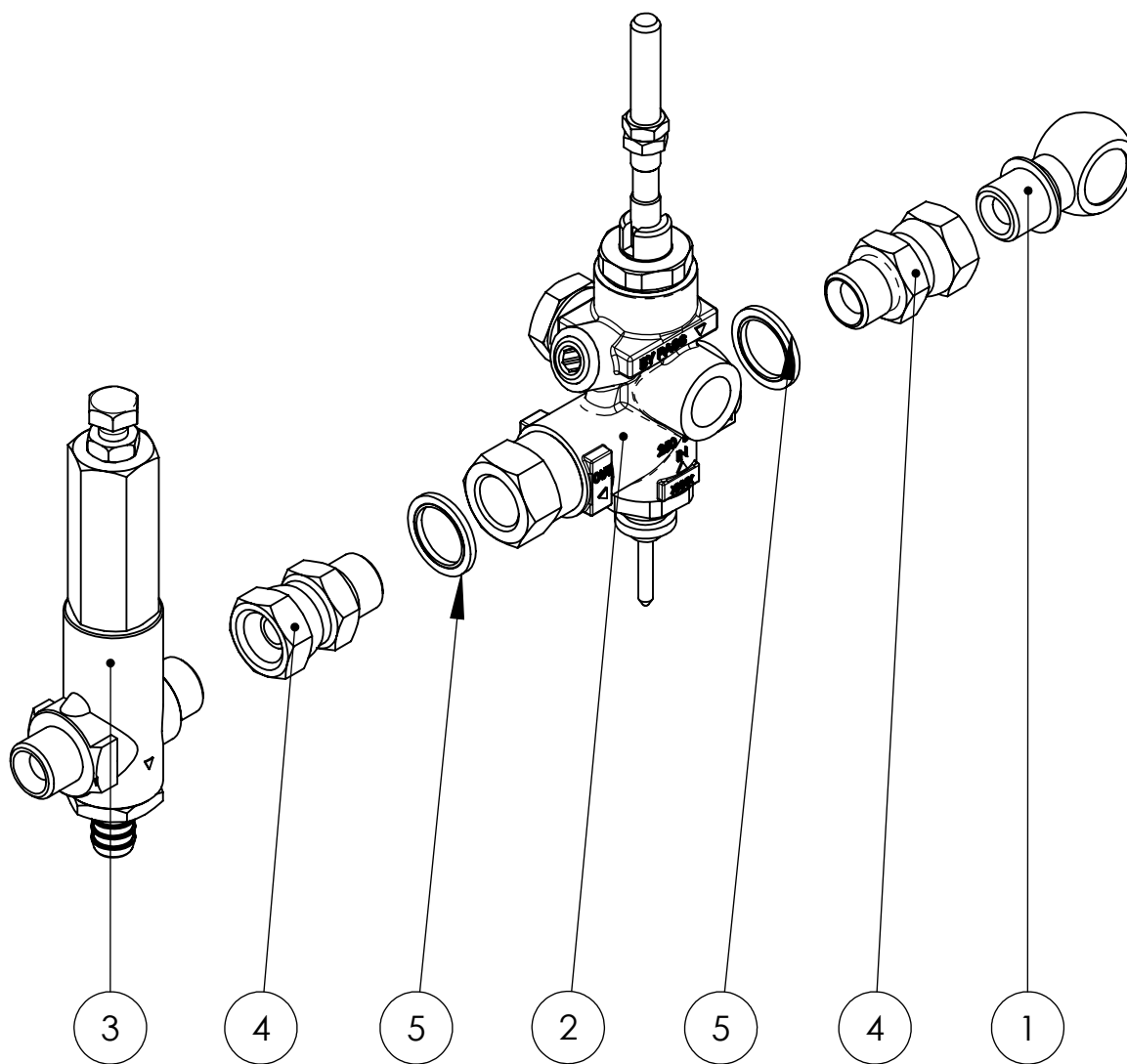
**2.034.04.042 .G**

<b>Pos.</b>	<b>Q.tà</b>	<b>Cod.</b>	<b>ITALIANO</b>	<b>ENGLISH</b>	<b>DEUTSCH</b>	<b>ESPAÑOL</b>	<b>FRANCAIS</b>
1	1	1.001.02.030	Raccordo G3/4-G3/8 M-M	Connection G3/4-G3/8 M-M	Leiste G3/4-G3/8 M-M	Filete G3/4-G3/8 M-M	Filet G3/4-G3/8 M-M
2	1	1.006.12.003	Guarnizione COPRIBASETTA	Gasket COPRIBASETTA	Dichtung COPRIBASETTA	Guarnición COPRIBASETTA	Garniture COPRIBASETTA
3	1	1.006.14.005	Guarnizione 86x86	Gasket 86x86	Dichtung 86x86	Guarnición 86x86	Garniture 86x86
4	1	1.007.24.003	Otturatore	Shutter	Obturator	Verschluss	Obturateur
5	1	1.012.02.005	Tappo	Cap	Deckel	Tapón	Bouchon
6	3	1.012.14.003	Tappo 3/8	Cap 3/8	Deckel 3/8	Tapón 3/8	Bouchon 3/8
7	1	1.021.02.012	Manopla	Knob	Griff	Pomo	Poignée
8	1	1.025.12.010	Molla P115	Spring P115	Feder P115	Muelle P115	Ressort P115
9	1	1.025.22.003	Molla	Spring	Feder	Muelle	Ressort
10	1	1.036.02.001	Inserito M8	Insert M8	Einsatz M8	Inserito M8	Insert M8
11	1	1.060.02.001	Distanziale H20	Spacer H20	Distanzstueck H20	Distanciador H20	Entretoise H20
12	1	1.072.02.004	Premimolla	Spring clamp	Federdrücker	Prensamuelle	Presse-ressort
13	1	1.081.02.001	Forcella	Fork	Gabel	Horquilla	Fourche
14	1	1.087.04.283	Etichetta	Label	Etiket	Etiqueta	Étiquette
15	2	1.164.04.004	Guaina	Insulator	Isolator	Aislador	Isolateur
16	1	2.006.24.005	Tubo by-pass L=330	by-pass Pipe L=330	by-passRohr L=330	Tubo by-pass L=330	Tuyau by-pass L=330
17	1	2.031.04.096	Quadro elettrico 230V50Hz KH120CI	Electric pannel 230V50Hz KH120CI	Schalttafel 230V50Hz KH120CI	Cuadro eléctrico 230V50Hz KH120CI	Cadre électrique 230V50Hz KH120CI
18	1	2.100.04.004	Gruppo valvola KH120C	Valve Unit KH120CI	Vantflagggregat KH120CI	Ensemble clapet KH120CI	Grupo Válvula KH120CI
19	1	3.006.12.063	Motopompa M100 50Hz+HC350	Motorpump M100 50Hz+HC350	Motorpumpe M100 50Hz+HC350	Motobomba M100 50Hz+HC350	Motopompe M100 50Hz+HC350
20	1	4.002.72.003	Vite M5x35 UNI7687	Screw M5x35 UNI7687	Schrauben M5x35 UNI7687	Tornillo M5x35 UNI7687	Vis M5x35 UNI7687
21	1	4.002.94.016	Vite M3.5x8 UNI8112	Screw M3.5x8 UNI8112	Schrauben M3.5x8 UNI8112	Tornillo M3.5x8 UNI8112	Vis M3.5x8 UNI8112
22	1	4.005.22.003	OR 2015	O-ring 2015	O-Ring 2015	OR 2015	Joint torique 2015
23	1	4.005.22.025	OR 3075	O-ring 3075	O-Ring 3075	OR 3075	Joint torique 3075
24	1	4.005.24.013	Guarnizione OR ø4.34X3.53	Gasket OR ø4.34X3.53	Dichtung OR ø4.34X3.53	Guarnición OR ø4.34X3.53	Garniture OR ø4.34X3.53
25	1	4.008.02.002	Rondella ø4.3xø8x0.5 (OT)	Washer ø4.3xø8x0.5 (OT)	Unterlegscheibe ø4.3xø8x0.5 (OT)	Arandela M4.3xø8x0.5 (OT)	Rondelle ø4.3xø8x0.5 (OT)
26	1	4.008.12.001	Rondella Rame G3/8	Copper washer G3/8	Kupferunterlegsscheib e G3/8	Arandela de cobre G3/8	Rondelle cuivre G3/8
27	1	4.008.54.001	Rondella di sicurezza UNI8842 M4	Safety washer UNI8842 M4	Sicherheits Scheibe UNI8842 M4	Arandela de seguridad UNI8842 M4	Rondelle de sûreté UNI8842 M4
28	1	4.009.12.001	Dado M8 UNI7474	Nut M8 UNI7474	Mutter M8 UNI7474	Dado M8 UNI7474	Ecrou M8 UNI7474
29	1	4.020.04.004	Manometro 0-300 G1/4 ø40	Pressure gauge 0-300 G1/4 ø40	Druckmesser 0-300 G1/4 ø40	Manómetro 0-300 G1/4 ø40	Manomètre 0-300 G1/4 ø40
30	2	4.024.14.006	Terminale (di cavo)	Terminal	Schuh	Terminal	Boîtes d'extrémité
31	1	4.036.04.006	Tappo G1/2 - G1/4	Cap G1/2 - G1/4	Deckel G1/2 - G1/4	Tapón G1/2 - G1/4	Bouchon G1/2 - G1/4
32	7	4.070.04.001	Guarnizione G3/8	Gasket G3/8	Dichtung G3/8	Guarnición G3/8	GarnitureG3/8

**Gruppo valvola KH120CI**

**Valve Unit KH120CI**  
**Grupo Válvula KH120CI**

**Vantlaggregat KH120CI**  
**Ensemble clapet KH120CI**



**2.100.04.004 .C**

Pos.	Q.ta	Cod.	ITALIANO	INGLESE	DEUTSCH	ESPAÑOL	FRANCAIS
1	1	1.001.34.008	Raccordo G3/8 L33	Connection G3/8 L33	Leiste G3/8 L33	Filete G3/8 L33	Filet G3/8 L33
2	1	2.003.34.014	Valvola di regolazione Pressione G3/8 F-F (TS)	Pressure unloader valve G3/8 F-F (TS)	Druckregelventile G3/8 F-F (TS)	Válvula reguladores de presion G3/8 F-F (TS)	Valve regulateur de presion G3/8 F-F (TS)
3	1	3.003.22.005	Valvola di sicurezza G3/8 MM	Safety pressure valve G3/8 MM	Max druck Einstellungsventile G3/8 MM	Valvula de seguridad G3/8 MM	Souppape de presion maximal G3/8 MM
4	2	4.012.04.002	Raccordo G3/8	Connection G3/8	Leiste G3/8	Filete G3/8	Filet G3/8
5	2	4.070.04.001	Guarnizione G3/8	Gasket G3/8	Dichtung G3/8	Guarnición G3/8	Garniture G3/8

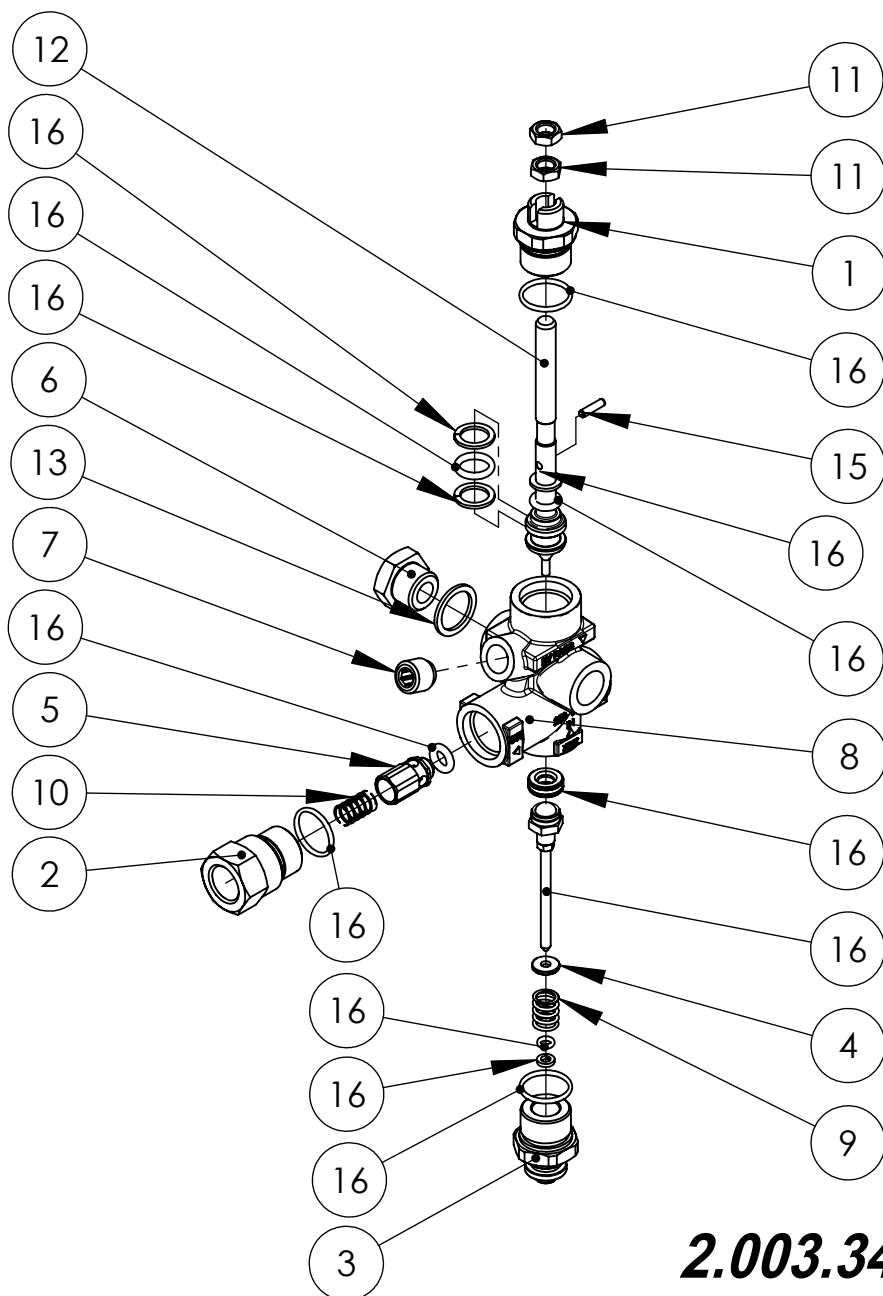
# Valvola di regolazione Pressione G3/8 F-F (TS)

Pressure unloader valve G3/8 F-F (TS)

Druckregelventile G3/8 F-F (TS)

Valve regulateur de presion G3/8 F-F (TS)

Válvula regladores de presion G3/8 F-F (TS)



**2.003.34.014 .F**

Pos.	Q.tà	Cod.	ITALIANO	ENGLISH	DEUTSCH	ESPAÑOL	FRANCAIS
1	1	1.001.02.002	Raccordo M20x3/8	Connection M20x3/8	Leiste M20x3/8	Filete M20x3/8	Filet M20x3/8
2	1	1.001.02.003	Raccordo Entrata M20x1.5 - G3/8"	Intake connection M20x1.5 - G3/8"	Eingangsverbindung M20x1.5 - G3/8"	Racor entrada M20x1.5 - G3/8"	Raccord d'entrée M20x1.5 - G3/8"
3	1	1.001.02.024	Raccordo	Connection	Leiste	Filete	Filet
4	1	1.003.02.004	Rondella ø4x11x1.5	Washer ø4x11x1.5	Unterlegscheibe ø4x11x1.5	Arandela ø4x11x1.5	Rondelle ø4x11x1.5
5	1	1.007.02.001	Otturatore	Shutter	Obturador	Verschluss	Obturateur
6	1	1.012.12.001	Tappo G3/8"	Cap G3/8"	Deckel G3/8"	Tapón G3/8"	Bouchon G3/8"
7	1	1.012.42.002	Tappo G1/4	Cap G1/4	Deckel G1/4	Tapón G1/4	Bouchon G1/4
8	1	1.020.22.004	Corpo VBR	Body VBR	Körper VBR	Cuerpo VBR	Corps VBR
9	1	1.025.12.002	Molla 15x1.4	Spring 15x1.4	Feder 15x1.4	Muelle 15x1.4	Ressort 15x1.4
10	1	1.025.12.003	Molla ø0.7xøe9xh21	Spring ø0.7xøe9xh21	Feder ø0.7xøe9xh21	Muelle ø0.7xøe9xh21	Ressort ø0.7xøe9xh21
11	2	1.035.02.001	Dado M8	Nut M8	Mutter M8	Dado M8	Ecrou M8
12	1	1.037.02.001	Stelo VRB	Stem VRB	Spindel VRB	Vastago VRB	Tige VRB
13	1	4.008.12.001	Rondella Rame G3/8	Copper washer G3/8	Kupferunterlegsscheibe G3/8	Arandela de cobre G3/8	Rondelle cuivre G3/8
14	1	4.008.12.003	Rondella Rame G1/4	Copper washer G1/4	Kupferunterlegsscheibe G1/4	Arandela de cobre G1/4	Rondelle cuivre G1/4
15	1	4.011.12.001	Spina	Plug	Stecker	Enchufe	Prise
16	1	9.003.02.007	Kit Tenute TOTALSTOP	Spare seals kit TOTALSTOP	Kit Dichtungen TOTALSTOP	Kit cierres TOTALSTOP	Kit joints détanchéité TOTALSTOP



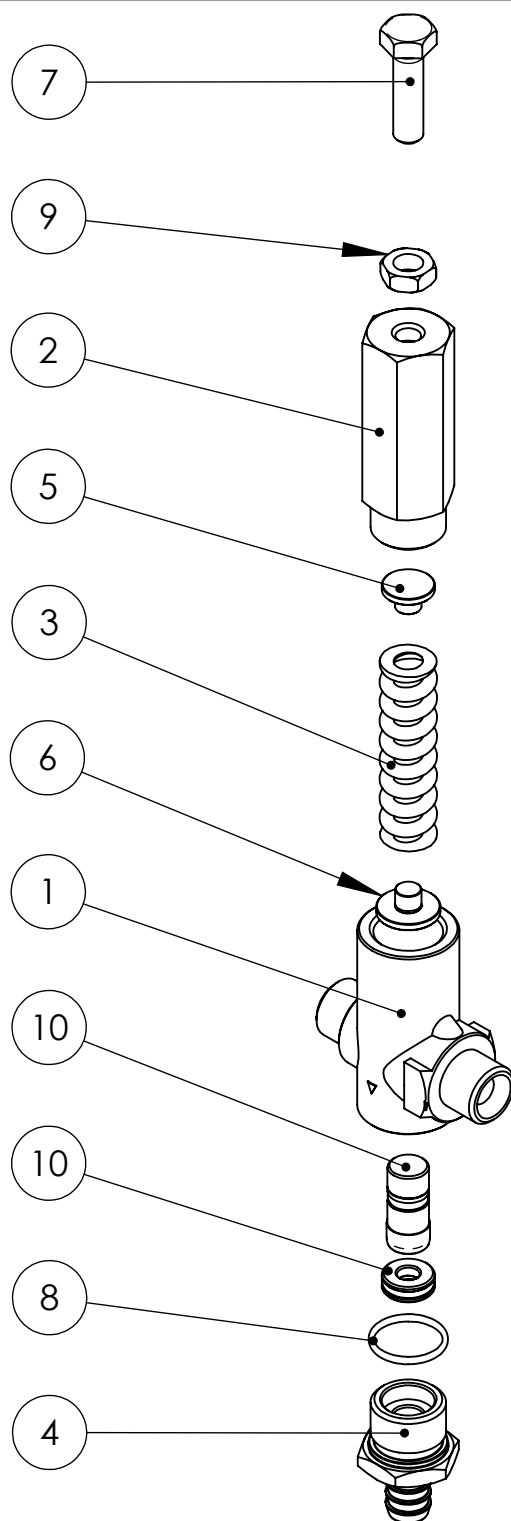
**Valvola di sicurezza G3/8 MM**

**Safety pressure valve G3/8 MM**

**Max druck Einstellungsventile G3/8 MM**

**Soupape de pression maximal G3/8 MM**

**Valvula de seguridad G3/8 MM**



**3.003.22.005 .B**

Pos.	Q.tà	Cod.	ITALIANO	ENGLISH	DEUTSCH	ESPAÑOL	FRANCAIS
1	1	1.020.22.021	Corpo G3/8-MM	Body G3/8-MM	Körper G3/8-MM	Cuerpo G3/8-MM	Corps G3/8-MM
2	1	1.021.02.011	Manopola Valvola di sicurezza	Safety pressure valve Knobs	Max druck Einstellungsventile Griff	Pomo Valvula de seguridad	Poignée de Soupape de pression maximal
3	1	1.025.22.007	Molla ø15.6 - F=3.8 - L=57	Spring ø15.6 - F=3.8 - L=57	Feder ø15.6 - F=3.8 - L=57	Muelle ø15.6 - F=3.8 - L=57	Ressort ø15.6 - F=3.8 - L=57
4	1	1.049.02.007	Portagomma ø12xM20x1.5 M	Hose fitting ø12xM20x1.5 M	Schlauchhalter ø12xM20x1.5 M	Portamanguera ø12xM20x1.5 M	Raccord pour tuyau ø12xM20x1.5 M
5	1	1.072.02.011	Premimolla	Spring clamp	Federdrücker	Prensamuelle	Presse-ressort
6	1	1.072.02.012	Premimolla	Spring clamp	Federdrücker	Prensamuelle	Presse-ressort
7	1	4.002.42.003	Vite M8x30 UNI5739	Screw M8x30 UNI5739	Schrauben M8x30 UNI5739	Tornillo M8x30 UNI5739	Vis M8x30 UNI5739
8	1	4.005.21.011	OR 2068	O-ring 2068	O-ring 2068	OR 2068	Joint torique 2068
9	1	4.009.04.003	Dado M8 UNI5589	Nut M8 UNI5589	Mutter M8 UNI5589	Dado M8 UNI5589	Ecrou M8 UNI5589
10	1	9.005.02.004	Kit Tenute	Spare seals kit	Kit Dichtungen	Kit cierres	Kit joints détachéité

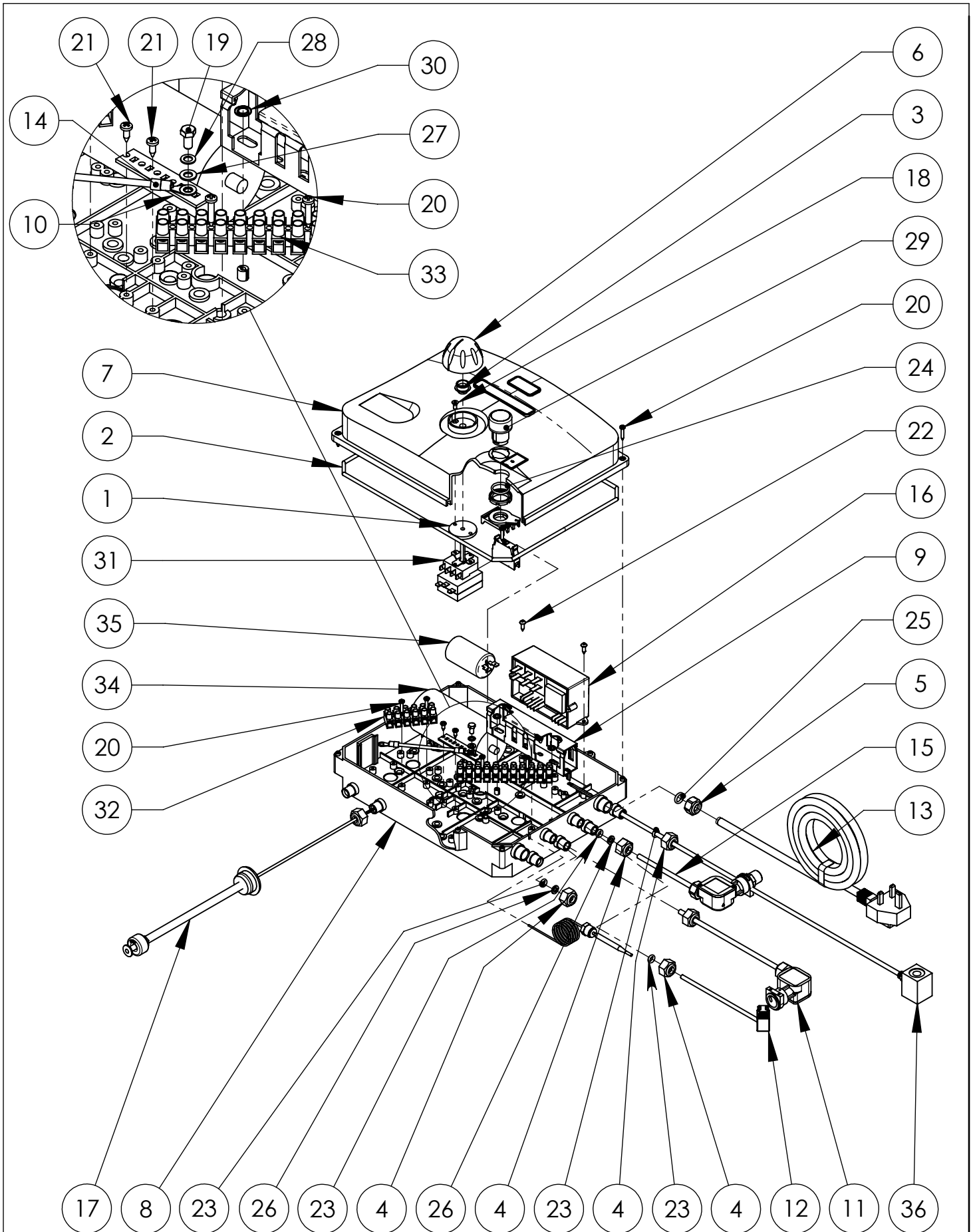
Quadro elettrico 230V50Hz KH120CI

Electric pannel 230V50Hz KH120CI

Cadre électrique 230V50Hz KH120CI

Schalttafel 230V50Hz KH120CI

Cuadro eléctrico 230V50Hz KH120CI



**2.031.04.096 .G**

<i>Pos.</i>	<i>Q.tà</i>	<i>Cod.</i>	<i>ITALIANO</i>	<i>ENGLISH</i>	<i>DEUTSCH</i>	<i>ESPAÑOL</i>	<i>FRANCAIS</i>
1	1	1.006.14.001	Guarnizione ø36	Gasket ø36	Dichtung ø36	Guarnición ø36	Garniture ø36
2	1	1.006.14.004	Guarnizione ø4x1020	Gasket ø4x1020	Dichtung ø4x1020	Guarnición ø4x1020	Garniture ø4x1020
3	1	1.006.14.012	Guarnizione	Gasket	Verzierung	Guarnición	Garniture
4	4	1.015.32.008	Ghiera G1/4"	Ferrule G1/4"	Zwinge G1/4"	Abrazadera G1/4"	Embout G1/4"
5	1	1.015.32.011	Ghiera	Ferrule	Zwinge	Abrazadera	Embout
6	1	1.021.04.006	Manopla	Knob	Griff	Pomo	Poignée
7	1	1.054.04.022	Coperchio	Cover	Deckel	Tapa	Couvercle
8	1	1.078.04.035	Scatola BASIC	Box BASIC	Kasten BASIC	Caja BASIC	Boite BASIC
9	1	1.110.04.003	Canaletta T1 25x40 G L140	Groove T1 25x40 G L140	Nut T1 25x40 G L140	Surco T1 25x40 G L140	Cannelure T1 25x40 G L140
10	1	1.128.04.003	Morsetto L=68	Clamp L=68	Klemme L=68	Prensita de sujeción L=68	Colier de serrage L=68
11	1	2.008.04.003	Pressostato S2 KH120CI	pressure gauge S2 KH120CI	Druckschalter S2 KH120CI	Presostato S2 KH120CI	Pressostat S2 KH120CI
12	1	2.020.04.038	Cavo	Cable	Kabel	Cable	Cable
13	1	2.020.04.076	Cavo elettrico 3x1.5 L5.98mt UK	Power cable 3x1.5 L5.98mt UK	Energie kabel 3x1.5 L5.98mt UK	Cable elettrico 3x1.5 L5.98mt UK	Cable électrique 3x1.5 L5.98mt UK
14	1	2.020.14.045	Cavo elettrico 2.5 GV L=280	Power cable 2.5 GV L=280	Energie kabel 2.5 GV L=280	Cable elettrico 2.5 GV L=280	Cable électrique 2.5 GV L=280
15	1	3.013.02.005	Pressostato 3/8	pressure gauge 3/8	Druckschalter 3/8	Presostato 3/8	Pressostat 3/8
16	1	3.024.02.008	Scheda elettronica MCC1	Electronic Board MCC1	ElektronischeKarte MCC1	Tarjeta electrónico MCC1	Carte électronique MCC1
17	1	3.030.02.010	Livellostato KH120CI	Leveller KH120CI	KH120CI	Nivelador KH120CI	Niveleur KH120CI
18	2	4.002.22.001	Vite M4x10 UNI5933	Screw M4x10 UNI5933	Schrauben M4x10 UNI5933	Tornillo M4x10 UNI5933	Vis M4x10 UNI5933
19	1	4.002.44.011	Vite M5x10 UNI5739	Screw M5x10 UNI5739	Schrauben M5x10 UNI5739	Tornillo M5x10 UNI5739	Vis M5x10 UNI5739
20	8	4.002.92.001	Vite autofilettante 3.5x19	Self-tapping Screw 3.5x19	Selbschneidendeschraub e 3.5x19	Tornillo autoblocante 3.5x19	Vis autofiletant 3.5x19
21	2	4.002.92.003	Vite autofilettante 3.5x10 AB	Self-tapping Screw 3.5x10 AB	Selbschneidendeschraub e 3.5x10 AB	Tornillo autoblocante 3.5x10 AB	Vis autofiletant 3.5x10 AB
22	2	4.002.94.005	Vite autofilettante 3.9x13	Self-tapping Screw 3.9x13	Gewindeschneidschraub e 3.9x13	Tornillo Self-tapping 3.9x13	Vies Autofiletante 3.9x13
23	4	4.005.22.009	OR 3024	O-ring 3024	O-ring 3024	OR 3024	Joint torique 3024
24	1	4.005.22.025	OR 3075	O-ring 3075	O-Ring 3075	OR 3075	Joint torique 3075
25	1	4.005.24.001	OR 112	O-ring 112	O-Ring 112	OR 112	Joint torique 112
26	2	4.008.02.001	Rondella 6.4x11x1.6 DIN433 UNI6592 ZEB	Washer 6.4x11x1.6 DIN433 UNI6592 ZEB	Unterlegscheibe 6.4x11x1.6 DIN433 UNI6592 ZEB	Arandela 6.4x11x1.6 DIN433 UNI6592 ZEB	Rondelle 6.4x11x1.6 DIN433 UNI6592 ZEB
27	1	4.008.04.005	Rondella M5 UNI6592	Washer M5 UNI6592	Unterlegsscheibe M5 UNI6592	Arandela M5 UNI6592	Rondelle M5 UNI6592
28	1	4.008.54.002	Rondella di sicurezza UNI8842 M5	Safety washer UNI8842 M5	Sicherheits Scheibe UNI8842 M5	Arandela de seguridad UNI8842 M5	Rondelle de sûreté UNI8842 M5
29	1	4.018.04.013	Interruttore BASIC	Switch BASIC	Schalter BASIC	Interruptor BASIC	Interrupteur BASIC
30	2	4.025.04.008	Seeger KS 6	Seeger KS 6	Seeger KS 6	Seeger KS 6	Seeger KS 6
31	1	4.031.04.003	Termostato 30/150°	Thermostat 30/150°	Thermostat 30/150°	Termostato 30/150°	Thermostat 30/150°
32	1	4.033.04.026	Morsetto 6mm 6P	Clamp 6mm 6P	Klemme 6mm 6P	Prensita de sujeción 6mm 6P	Colier de serrage 6mm 6P
33	1	4.033.04.034	Morsettiera 6mmq 11p	Terminal Block 6mmq 11p	Klemmleisten 6mmq 11p	Tableros de bornes 6mmq 11p	Plaques à bornes 6mmq 11p
34	1	4.035.02.010	Condensatore 70Mf (60x120)	Condenser 70Mf (60x120)	Kondensator 70Mf (60x120)	Condensador 70Mf (60x120)	Condenseur 70Mf (60x120)
35	1	4.035.02.017	Condensatore 8mf 450V	Condenser 8mf 450V	Kondensator 8mf 450V	Condensador 8mf 450V	Condenseur 8mf 450V
36	1	4.040.04.001	Bobina	Solenoid	Bandspule	Bobina	Bobine

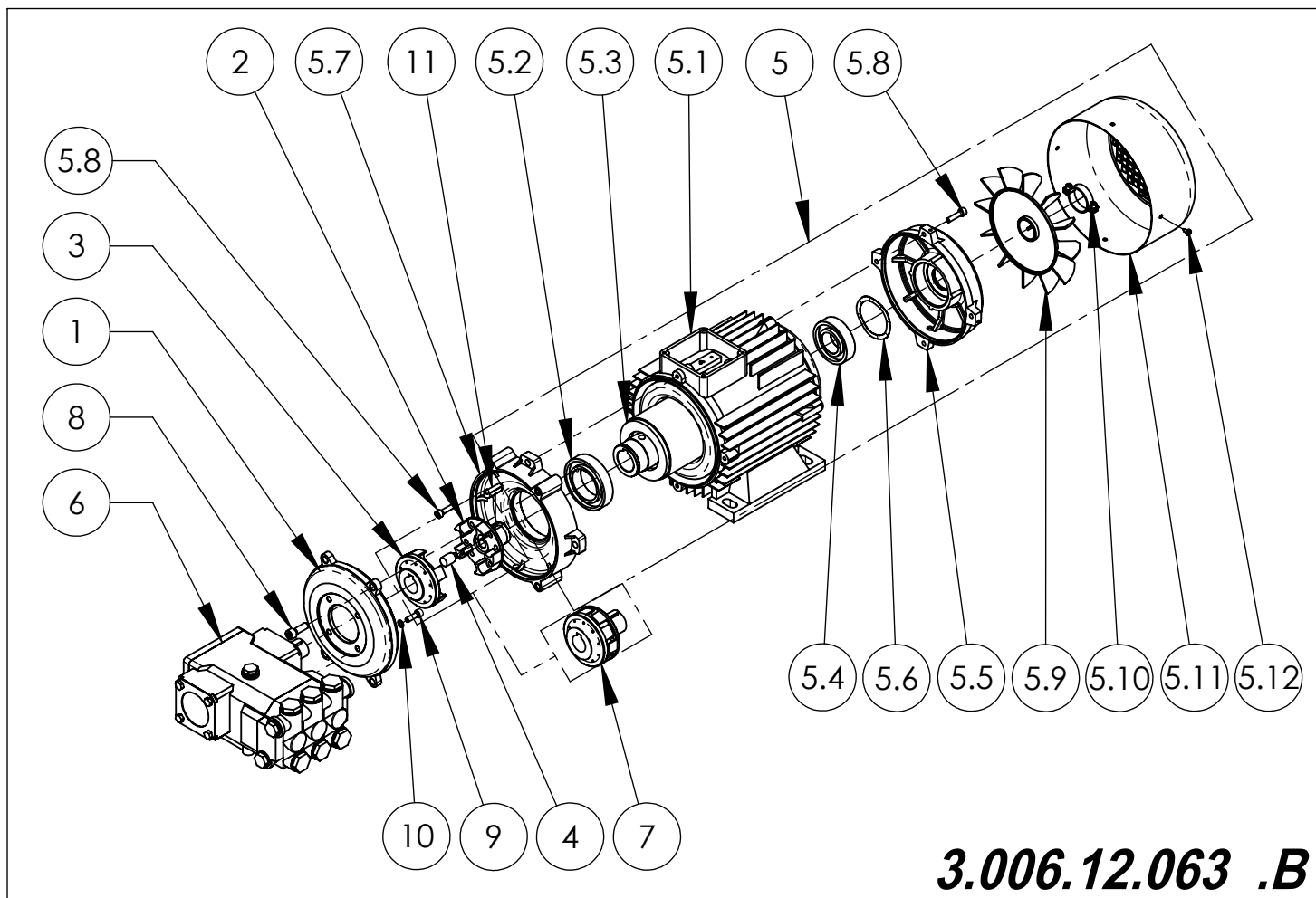
**Motopompa M100 50Hz+HC350**

**Motorpump M100 50Hz+HC350**

**Motopompe M100 50Hz+HC350**

**Motorpumpe M100 50Hz+HC350**

**Motobomba M100 50Hz+HC350**



**3.006.12.063 .B**

Pos.	Q.tà	Cod.	ITALIANO	ENGLISH	DEUTSCH	ESPAÑOL	FRANCAIS
1	1	1.074.02.037	Flangia lato pompa MEC100 *SST*	Pump side flange MEC100 *SST*	Pumpe seitlicher Flansch MEC100 *SST*	Reborde lateral de la bomba MEC100 *SST*	Bride lateral de pompe MEC100 *SST*
2	1	1.131.02.007	Mozzo G100 (ø30)	Hub G100 (ø30)	Nabe G100 (ø30)	Cubo G100 (ø30)	Moyeu G100 (ø30)
3	1	1.131.02.008	Mozzo G100 (ø24 L=31)	Hub G100 (ø24 L=31)	Nabe G100 (ø24 L=31)	Cubo G100 (ø24 L=31)	Moyeu G100 (ø24 L=31)
4	10	1.157.02.001	Ammortizzatore	Cushion	Dämpfer	Amortiguador	Amortisseur
5	1	3.002.22.011	Motore Elettrico MEC 100 B3BS MF230V50Hz	Electric Motor MEC 100 B3BS MF230V50Hz	Elektromotor MEC 100 B3BS MF230V50Hz	Motor Eléctrico MEC 100 B3BS MF230V50Hz	Moteur électrique MEC 100 B3BS MF230V50Hz
5.1	1	2.017.02.024	Carter Montato M100 B3BS+STA 230V50HzMF4P	Assembled Guard M100 B3BS+STA 230V50HzMF4P	Montiertes Gehäuse M100 B3BS+STA 230V50HzMF4P	Ensamblado Carter M100 B3BS+STA 230V50HzMF4P	Carter assemblé M100 B3BS+STA 230V50HzMF4P
5.2	1	4.016.02.010	Cuscinetto SKF 6009-ZZ C3	Bearing SKF 6009-ZZ C3	Kugellager SKF 6009-ZZ C3	Rodamiento SKF 6009-ZZ C3	Roulement SKF 6009-ZZ C3
5.3	1	2.014.02.047	Rotore M100MF	Rotor M100MF	Rotor M100MF	Rotor M100MF	Rotor M100MF
5.4	1	4.016.02.005	Cuscinetto SKF 6206-ZZ C3	Bearing SKF 6206-ZZ C3	Kugellager SKF 6206-ZZ C3	Rodamiento SKF 6206-ZZ C3	Roulement SKF 6206-ZZ C3
5.5	1	1.074.02.008	Flangia posteriore MEC100	back flange MEC100	Rückseitiger Flansch MEC100	Reborde trasero MEC100	Bride arrier MEC100
5.6	1	4.049.12.002	Anello 6206	Ring 6206	Ring 6206	Anillo 6206	Bague 6206
5.7	1	1.074.02.036	Flangia anteriore MEC100	Front flange MEC100	Forderer Flansch MEC100	Reborde delantero MEC100	Bride avant MEC100
5.8	2	4.002.12.008	Vite M6x25 UNI5931	Screw M6x25 UNI5931	Schrauben M6x25 UNI5931	Tornillo M6x25 UNI5931	Vis M6x25 UNI5931
5.9	1	1.073.02.004	Ventola MEC100	Impeller MEC100	Antreiber MEC100	Impledor MEC100	Roue à aubes MEC100
5.10	1	1.045.02.006	Fascetta Ventola FA100	Clamp Impeller FA100	Klemme Antreiber FA100	Faja Impledor FA100	Petit bande Roue à aubes FA100
5.11	1	1.046.02.013	Protezione ventola MEC100	Fan protection MEC100	Antreiberschutz MEC100	Protección del ventilador MEC100	Protection du ventilateur MEC100
5.12	1	4.002.94.015	Vite autofilettante 3.9x9.5	Self-tapping Screw 3.9x9.5	Selbschneidendeschraube 3.9x9.5	Tornillo autoblocante 3.9x9.5	Vis autofiletant 3.9x9.5
6	1	3.015.12.025	Pompa HC350	Pump HC350	Pump HC350	Bomba HC350	Pompe HC350
7	1	3.055.02.004	Giunto ø24-ø30 MEC100 *SST*	Coupling ø24-ø30 MEC100 *SST*	Kupplung ø24-ø30 MEC100 *SST*	Acoplamiento ø24-ø30 MEC100 *SST*	Accouplement ø24-ø30 MEC100 *SST*
8	1	4.002.11.002	Vite M8x25 UNI5931	Screw M8x25 UNI5931	Schrauben M8x25 UNI5931	Tornillo M8x25 UNI5931	Vis M8x25 UNI5931
9	4	4.002.14.020	Vite M6x20 UNI5931	Screw M6x20 UNI5931	Schrauben M6x20 UNI5931	Tornillo M6x20 UNI5931	Vis M6x20 UNI5931
10	4	4.008.52.001	Rondella di sicurezza M6	Safety washer M6	Sicherheits Scheibe M6	Arandela de seguridad M6	Rondelle de sûreté M6
11	1	4.021.02.004	Chiavetta 8x7x30 UNI6604-A	Key 8x7x30 UNI6604-A	Keil 8x7x30 UNI6604-A	Chaveta 8x7x30 UNI6604-A	Clavette 8x7x30 UNI6604-A



KRÜGER TECHNOLOGY S.L.  
B-82526583  
Polígono Agustinos C/G Parcela B2  
31013 Pamplona (Navarra) - ESPAÑA  
+34 948 343 393 - info@kruger.es - www.kruger.es