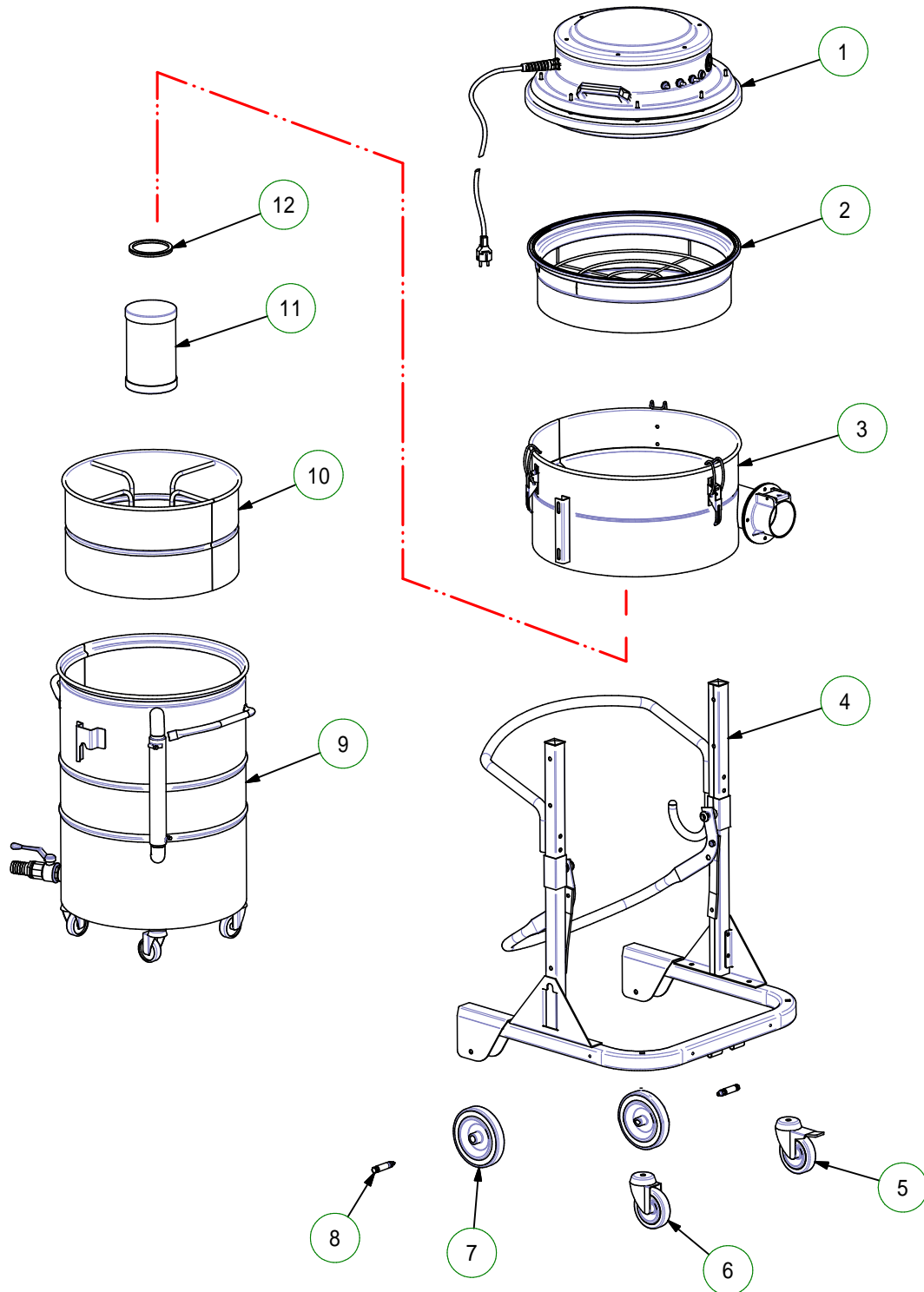


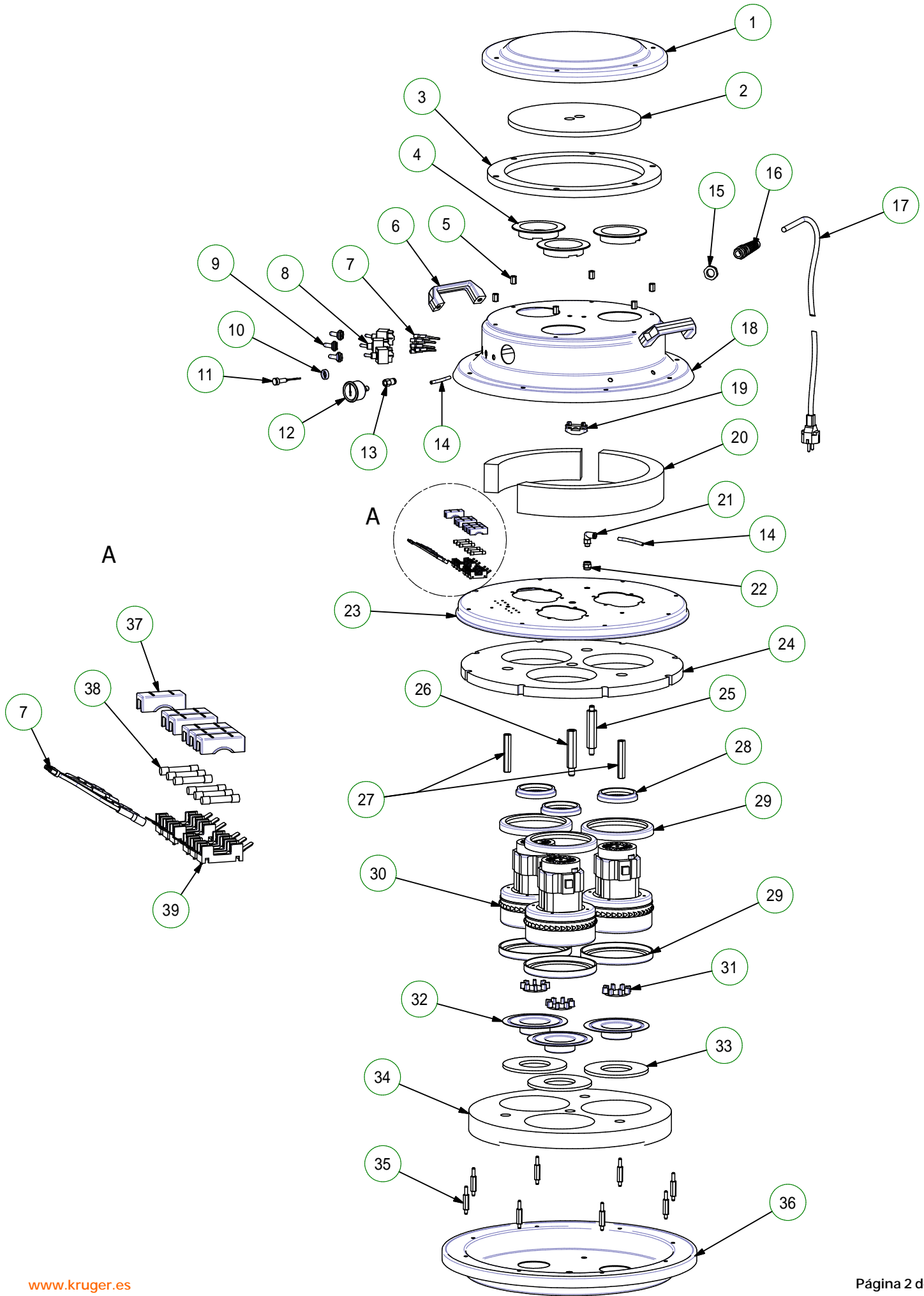


DESPIECE TÉCNICO KRAI4500IL



Part List / Elenco parti

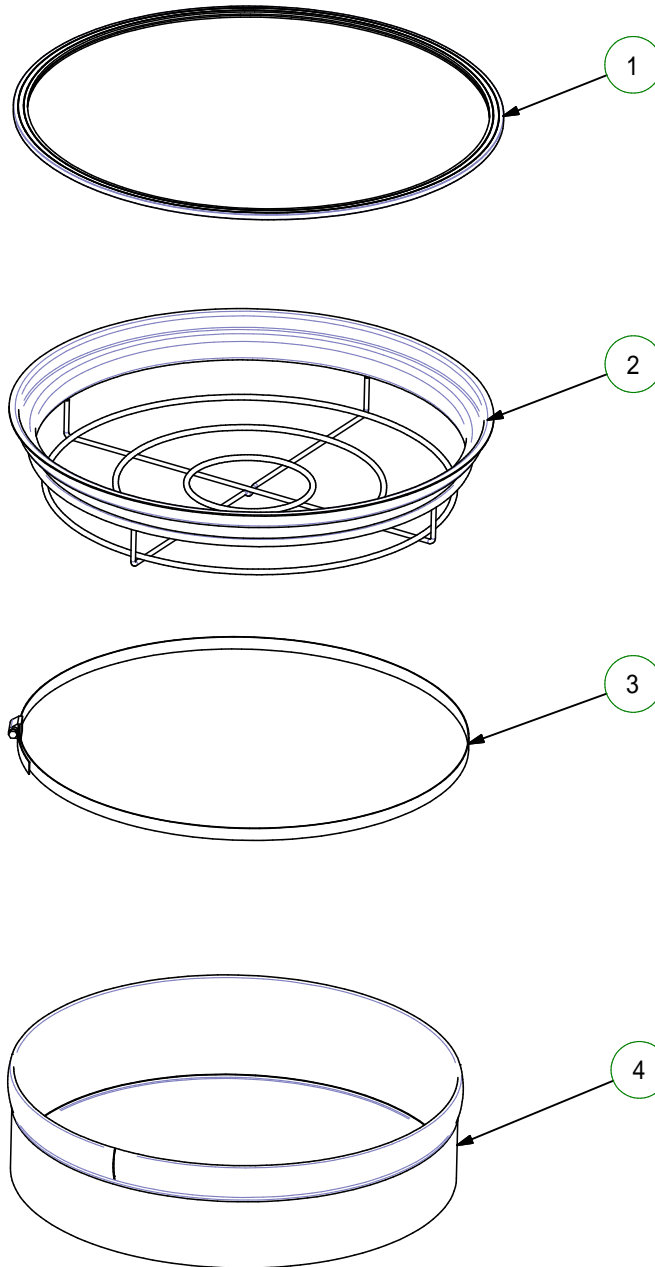
POS.	QTY	CODE	DESCRIPTION	DESCRIZIONE
1	1	KT.1249.1018	230V M450 S MOTOR HEAD KIT	KIT TESTATA KRAI450OIL 230V
2	1	KT.0306.0020	GALVANIZED DM OIL FILTER KIT	KIT FILTRO DM OIL ZINCATO
3	1	KT.0031.1018	ST.0171.1018 CHAMBER KIT	KIT CAMERA ST.0171.1018
4	1	-	MACHINE BODY	CORPO MACCHINA
5	1	RT.0069.0000	D. 100 BLACK RUBBER WHEEL WITH BRAKE	RUOTA D100 PIV.C/FR GOMMA NERA
6	1	RT.0068.0000	D. 100 BLACK RUBBER WHEEL	RUOTA D100 PIV. GOMMA NERA
7	2	RT.0010.0000	D. 150 RUBBER WHEEL	RUOTA GOMMA D150
8	2	RT.0011.0000	RT.0011.0000 WHEEL AXLE KIT	KIT ASSALE RUOTA RT.0011.0000
9	1	KT.0163.1018	ST.0172.1018 CONTAINER KIT (DM OIL)	KIT CONTENITORE ST.0172.1018 DM OIL
10	1	SL.1208.7016	DM OIL SIEVE GRID	CESTELLO GRIGLIATO DM OIL
11	1	SL.2852.0000	D125 H200 PLEXIGLASS FLOATING	GALLEGGIANTE D125 H200 PLEXIGLASS
12	1	GI.0216.0000	D95 NBR GASKET FOR FLOATING CYCLONE	GUARNIZIONE NBR D95 PER CICLONE GALLEGGIANTE N.T.





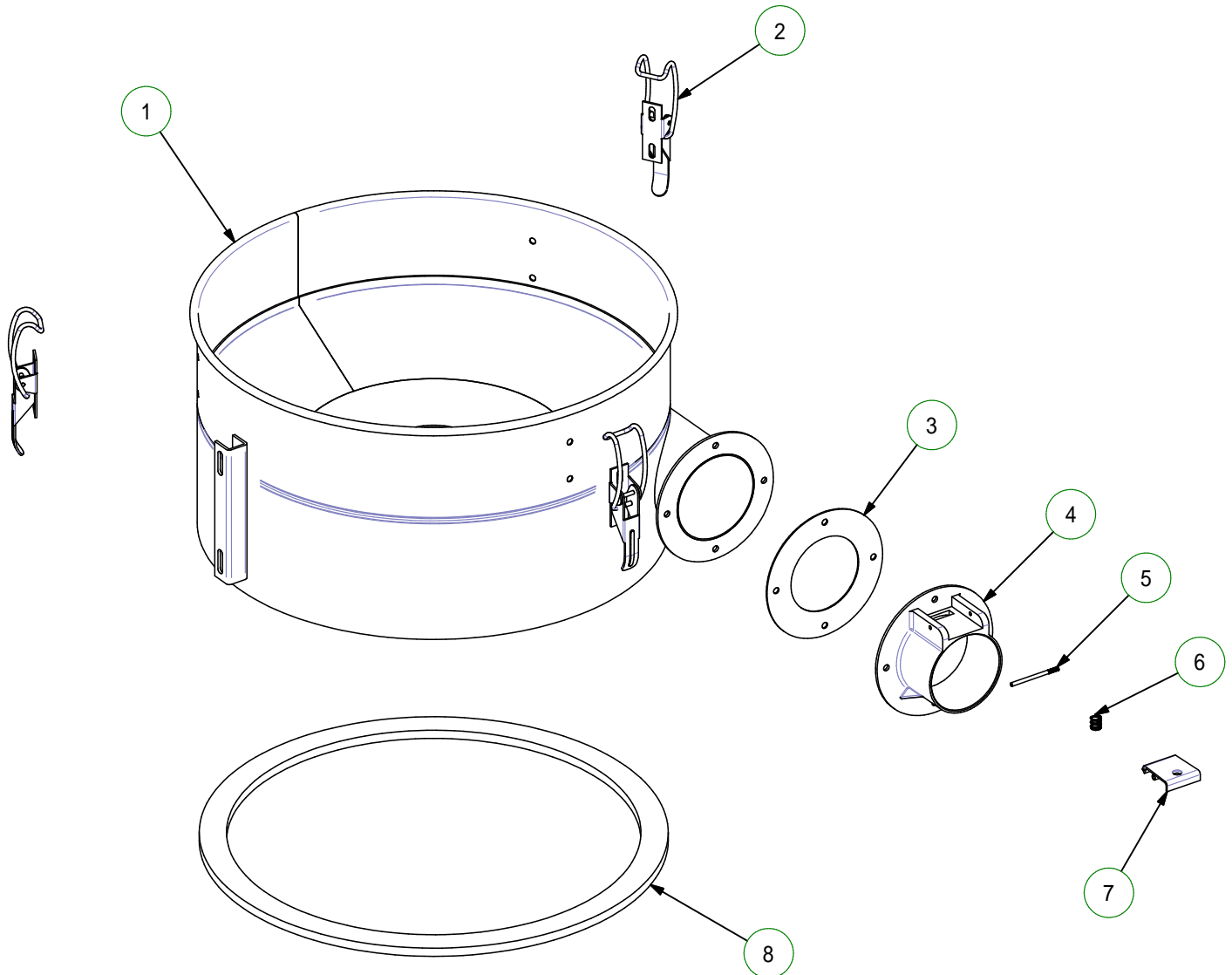
KRÜGER TECHNOLOGY S.L.
B-82526583
Polígono Agustinos C/G Parcela B2
31013 Pamplona (Navarra) - ESPAÑA
+34 948 343 393 - info@kruger.es - www.kruger.es

Part List / Elenco parti				
POS.	QTY	CODE	DESCRIPTION	DESCRIZIONE
1	1	CT.0009.7016	SINGLE-PHASE MOTOR HEAD COVER	COPERCHIETTO MONOFASE
2	1	GI.0004.0000	COVER NOISE BUFFERING MATERIAL	INSONORIZZ.COPERCHIETTO
3	1	SL.0390.0000	10 PPI SP.15MM FILTER RING	RONDELLA FILTRO 10 PPI SP.15mm
4	3	SL.0914.0000	COOLING RING	ANELLO RAFFREDDAMENTO GOMMA STAMP.SERIE ABS
5	6	SL.0911.0020	MTL AIR MOTOR HEAD SPACER	DISTANZIALE TESTATA MTL AIR
6	2	SL.0224.0000	HANDLE	MANIGLIA A PONTE 117 RAGGIATA
7	1	EP.0172.0000	230V SINGLE-PHASE 3 MOTORS HEAD WIRING KIT (MASTER)	KIT FILATURA TESTATA MASTER MF 230V 3 MOTORI
8	3	EP.0017.0000	SINGLE-PHASE SWITCH FOR HEAD MOD. MASTER	INTERRUTTORE MONOFASE TESTATA MASTER
9	3	EP.0018.0000	SINGLE-PHASE SWITCH COATING	CAPPUCCIO PER INTERRUTTORE MONOFASE
10	1	EP.0304.0000	CHROMED NUT FOR HEAD LIGHT	GHIERA CROMATA SPIE LUMINOSE TESTATA
11	1	EP.0019.0000	220 V. RED LIGHT	SPIA LUMINOSA ROSSA 220V
12	1	EP.0207.0000	D. 40 AIR - MTL - ABS VACUUM GAUGE	VUOTOMETRO D.40 AIR - MTL - ABS (NEUTRI)
13	1	EP.0119.0000	F 1/8 D6 STRAIGHT AIR PIPE COUPLING CONNECTION	RACCORDO RAPIDO DRITTO G1/8F D6
14	0,3 m	EP.0187.0000	4X6 RILSAN PIPE	TUBO NYLON RILSAN 4X6 NEUTRO
15	1	EP.0166.0000	PG 13,5 BLACK POLYAMIDE NUT	DADO POLIAMMIDE PG 13,5 NERO
16	1	EP.0021.0000	PG 13.5 POLYAMIDE BLACK CABLE FASTENER	PRESSACAVO POLIAMMIDE SPIR.PG 13.5 NERO
17	1	EP.0022.0000	3X2,5 16A SCHUKO POWER SUPPLY CABLE (10 mt.)	CAVO ALIMENT.3X2,5 16A SCHUKO (10 m.)
18	1	CT.0054.1018	SINGLE-PHASE COVER WITH 3 HOLES (MASTER)	COPERCHIO MONO 3FORI+VUOT.N.T. (MASTER)
19	1	EP.0141.0000	SBMMM932 CABLE FASTENER SUPPORT	SUPPORTO FERMACAVO SBMMM932
20	1	GI.0005.0000	SINGLE-PHASE COVER NOISE BUFFERING MATERIAL	INSONORIZZ.COPERCHIO MONOF
21	1	EP.0122.0000	G1/8M - D6 SWIVEL ELBOW PUSH-IN FITTING	RACCORDO RAPIDO A GOMITO GIREV. G1/8 M - D6
22	1	SL.0697.0000	F/F 1/8" CONNECTION	MANICOTTO F/F 1/8"
23	1	CT.0056.1018	3 HOLES MOTOR FASTENER	FERMAMOTORI 3FORI N.T. (MASTER)
24	1	GI.0009.0000	3 HOLES MOTOR FASTENER NOISE BUFFERING MATERIAL	INSONORIZZ.FERMAMOTORE 3 FORI
25	1	SL.0700.0020	SINGLE-PHASE MOTOR HEAD SPACER (M. FASTENER)	DIST. TESTATA MONOFASE (FERMAMOTORI, C/PASS. ARIA)
26	1	SL.0699.0020	SINGLE-PHASE MOTOR HEAD SPACER (M. FASTENER)	DIST. TESTATA MONOFASE (FERMAMOTORI, CENTRALE)
27	2	SL.0698.0020	SINGLE-PHASE MOTOR HEAD SPACER (M. FASTENER)	DIST. TESTATA MONOFASE (FERMAMOTORI, ESTERNO)
28	3	SL.1116.0000	H=15 PLASTIC MOTOR RING	ANELLO MOTORE H=15 PLAST.
29	6	GI.0323.0000	D. 145X5 H15 NBR GASKET	GUARNIZIONE "L" NBR D145X5 H15
30	3	GA.0020.0000	W1150 V240 50/60 Hz BP MOTOR	MOTORE BP 240V 50/60Hz 1150W
31	3	SL.0701.0000	MTL BOTTOM PLATE VALVE	VALVOLA FONDELLO MTL
32	3	SL.0702.0020	MTL MOTORS BOTTOM PLATE (GALVANIZED)	FONDELLO APERTO MOTORI MTL ZINCATO
33	3	GI.0306.0000	BY-PASS MOTOR BOTTOM PLATE GASKET	GUARNIZIONE D132X364 SP.6 MOUSSE BREPDM150
34	1	GI.0010.0000	3 HOLES BASE PLATE NOISE BUFFERING MATERIAL	INSONORIZZ.BASAMENTO 3 FORI
35	8	SL.0264.0020	MASTER MOTOR HEAD SPACER (MOTOR FASTENER)	DISTANZIALE TESTATA MASTER (FERMAMOTORI)
36	1	CT.0058.7016	3 HOLES TRF BASE PLATE	BASAMENTO MONOFASE 3FORI N.T. (MASTER)
37	6	EP.0072.0000	FUSE BLACK COATING	CAPPUCCIO NERO COPRIFUSIBILE NT
38	6	EP.0071.0000	10A 250V 6.3x32 FUSE	FUSIBILE VETRO 10A 250V 6,3x32
39	6	EP.0213.0000	30A 250V FUSE HOLDER	PORTAFUSIBILE 30A 250V

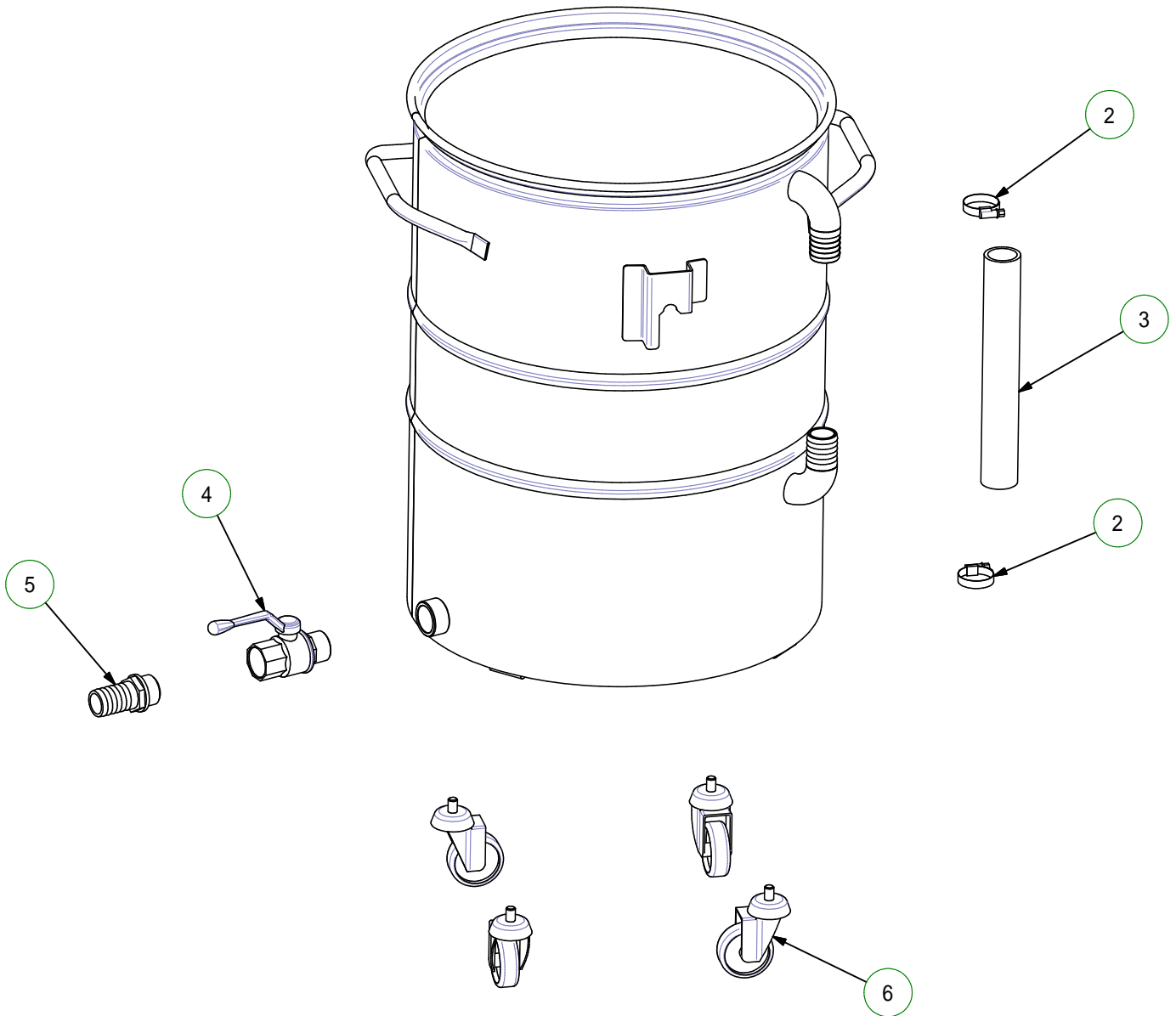


Part List / Elenco parti

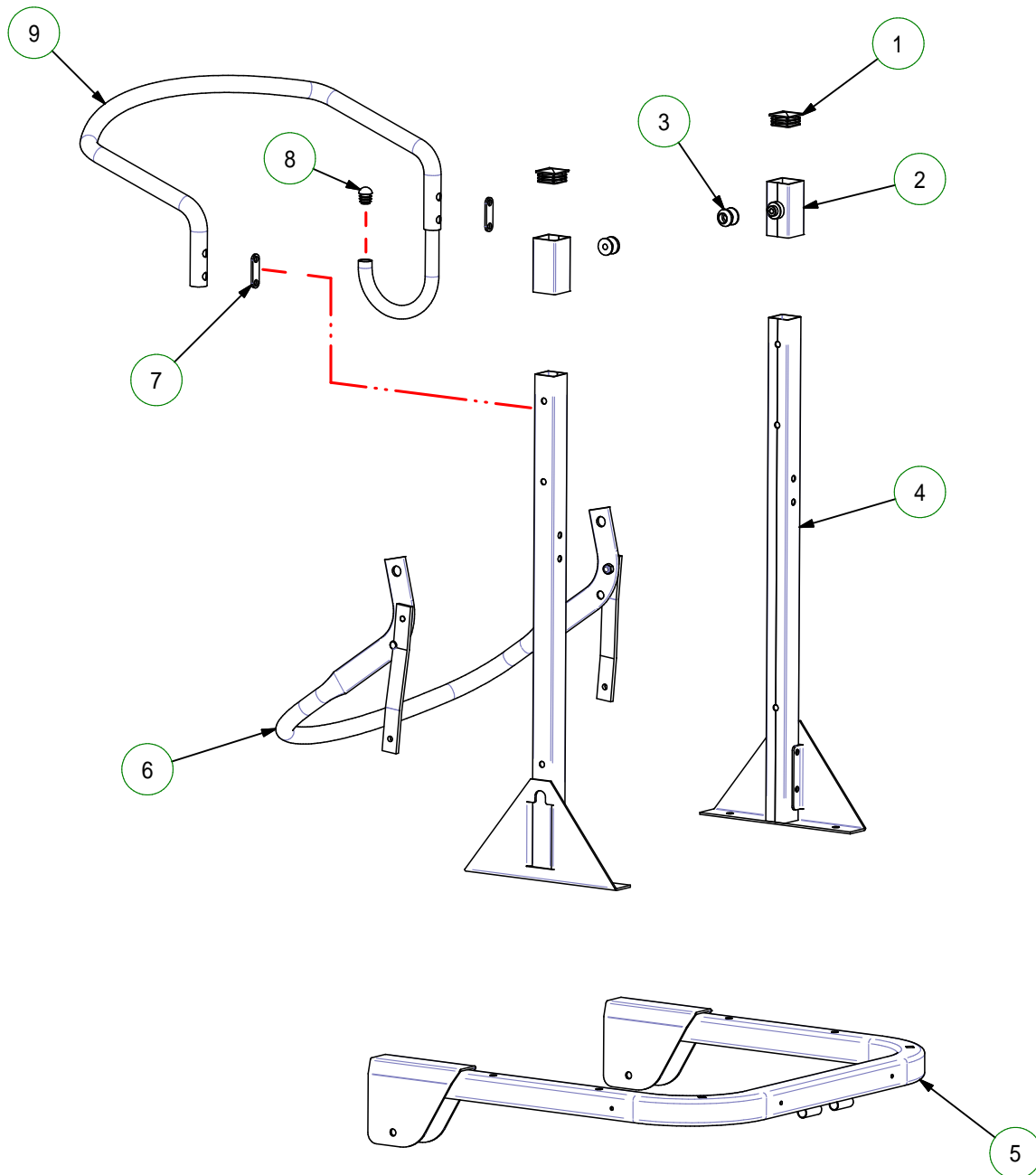
POS.	QTY	CODE	DESCRIPTION	DESCRIZIONE
1	1	GI.0054.0000	D. 500 OILPROOF NEOPRENE FILTER GASKET	GUARN. REGGIFILTRO ANTIOLIO NBR D500
2	1	SL.0793.0020	GALVANIZED H105 TCN150 FILTER HOLDER RING	ANELLO REGGIFILTRO H95 CPL TCN150 ZINCATO
3	1	SL.0223.0000	14MM L1510 FILTER CLAMP	FASCETTA FERMAFILTRO 14MM L1510 PREMONTATA
4	1	FI.0175.0000	D500 H100 POLYESTER CYLINDRICAL FILTER	FILTRO CILINDRICO POL.D500 H100



Part List / Elenco parti				
POS.	QTY	CODE	DESCRIPTION	DESCRIZIONE
1	1	ST.0171.1018	D500X220H FILTER CHAMBER FOR D/M 35-40 OIL	CAMERA FILTR. D500X220H D/M 35-40 OIL
2	3	SL.0216.0000	LATCH TOGGLE CLAMP	CHIUSURA A GANCIO PLASTIFICATA
3	1	GI.0040.0000	D80 DIE-CAST INLET GASKET	GUARN. BOCCHETTONE PRESSOFUSO D80
4	1	SL.0829.0000	D80 FLAT DIE-CAST INLET	BOCCHETTONE D80 PRESSOFUSO PIATTO
5	1	SL.0401.0020	GALVANIZED DIE CAST INLET PAWL PIN	SPINA BOCCH PRESSOFUSO ZINCATA
6	1	SL.0402.0000	PAWL SPRING	MOLLA SALTERELLO
7	1	SL.0403.0020	GALVANIZED DIE CAST INLET PAWL	SALTARELLO BOCCHETTONE PRESSOF
8	1,6 m	GI.0142.0000	10X30 ADHESIVE GASKET	GUARN.RETTANGOLARE ADESIVA 10x30



Part List / Elenco parti				
POS.	QTY	CODE	DESCRIPTION	DESCRIZIONE
1	1	ST.0172.1018	D450X605H CONTAINER FOR D/M 35-40 OIL	CONTENITORE D450X605H D/M 35-40 OIL
2	2	SL.0456.0000	D. 25/40 CLAMP	FASCETTA STRINGITUBO 9MM 25-40
3	0,5 m	TA.0237.0000	D32 LEVEL INDICATOR PIPE	TUBO INDICATORE DI LIVELLO D32
4	1	EP.0068.0000	R1 - G1 MF BALL VALVE	VALVOLA A SFERA 1" MF
5	1	EP.0098.0000	1"-30 NYLON STRAIGHT CONNECTION	PORTAGOMMA DIRITTO NYLON 1"-30
6	4	RT.0004.0000	D. 60 NYLON CASTOR	RUOTA D60 NYLON PIV.



Part List / Elenco parti				
POS.	QTY	CODE	DESCRIPTION	DESCRIZIONE
1	2	SL.0232.0000	35X35 SQUARE HEAD COVER	COPRITESTA QUADRO 35x35
2	2	SL.0295.0020	GALVANIZED DM3/ZFR101 SLIDER	CORSOIO DM3/ZFR101 ZINCATO
3	2	SL.0368.0020	GALVANIZED FASTENING LEVER FULCRUM	FULCRO LEVA AGGANCIAMENTO ZINCATO
4	2	SL.1209.0020	GALVANIZED DM OIL COLUMN	MONTANTE DM OIL ZINCATO
5	1	ST.0175.1018	DM OIL TROLLEY	CARRELLO DM OIL
6	1	SL.0247.7016	FASTENER LEVER	LEVA AGGANCIAMENTO GRANDE
7	2	SL.2479.0020	DM OIL PUSH HANDLE SPACER (GALVANIZED)	DISTANZIALE MANICO DI SPINTA DM OIL ZINCATO
8	1	SL.0510.0000	D. 20 HEAD COVER	COPRITESTA D.20
9	1	SL.1663.7016	DM OIL PUSH HANDLE	MANICO DI SPINTA DM OIL