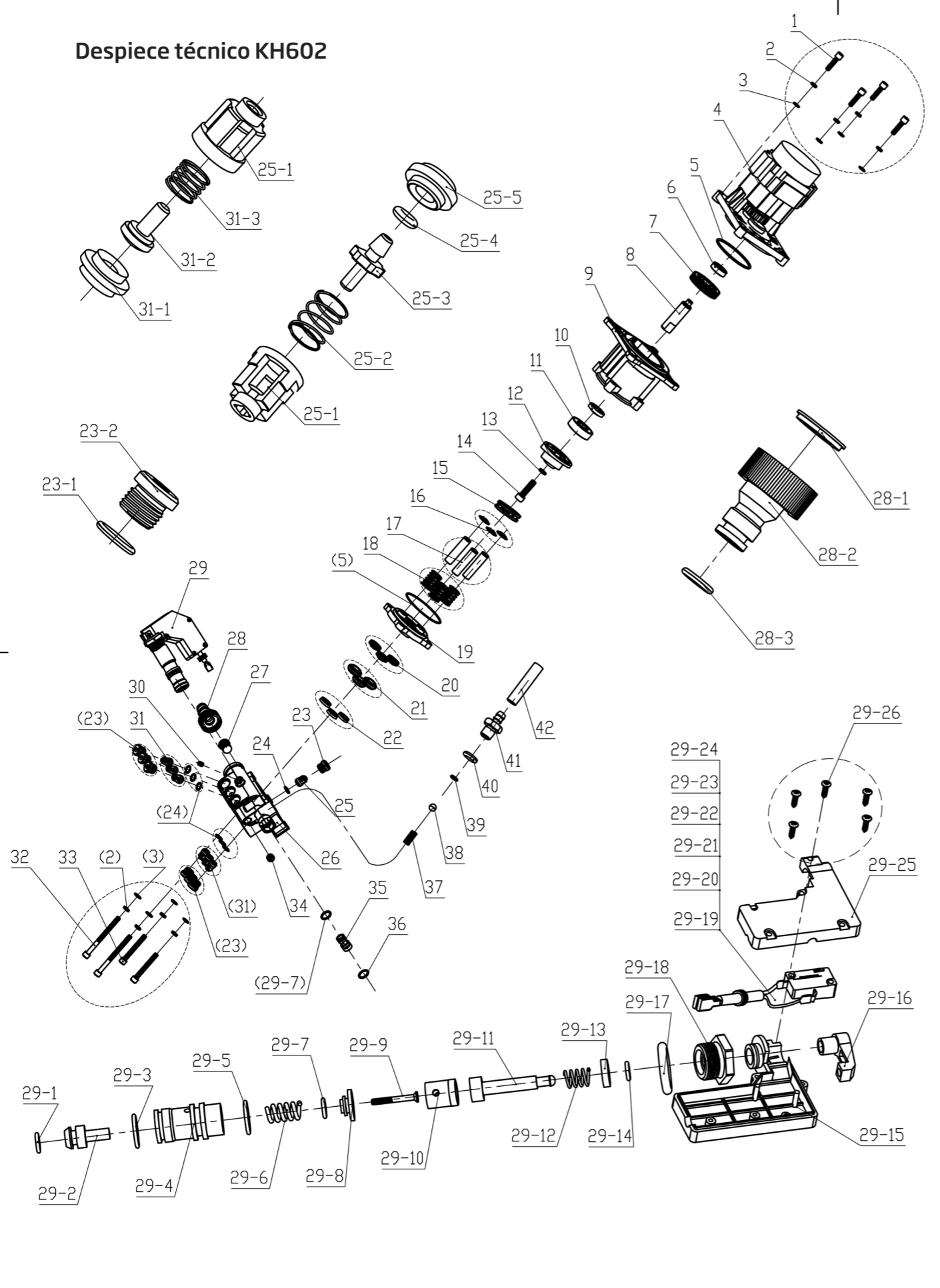


## Despiece técnico KH602





# Despiece técnico KH602



29-8	FI701-01-7	1	3Cr13				
29-7	GB/T3452.1-1992	2	80			5.6x2	
29-6	FI701-01-6e	1	1Cr18Ni9				
29-5	GB/T3452.1-1992	1	80			14x2.65	
29-4	FI701-01-5	1	POM				
29-3	GB/T3452.1-1992	1	80			14x2	
29-2	FI701-01-3	1	3Cr13				
29-1	GB/T3452.1-1992	1	85			6.5x2.65 (45°)	
29		1					
28-3	FB501-01-28	1					
28-2	FB501-01-27B	1	ABS				
28-1	GB/T3452.1-1992	1	70			11x2.65	
28		1					
42	GB/T13527.1-92	1	PVC		LS-5.5x1x650		
41	FI701-01-25	1	LF6				
40	GB/T3452.1-1992	1	80	10x2.2			
39	GB/T3452.1-1992	1	80	4x1.5			2.7x1.8
38	GB/T308	1		Sφ6			
37	FI701-01-28	1	1Cr18Ni9				
36	GB/T3452.1-1992	1	80	6.9x1.8			
35	FB611-01-2	1	POM				
34	FB601-01-25a	1	35#	M10			
33	GB/T70.1-2000	2	8.8	M6x75			
32	GB/T70.1-2000	2	8.8	M6x50			
31-3	FB601-01-14	1	1Cr18Ni9				
31-2	FB601-01-12	1	POM				
31-1	FB601-01-11	1	POM				
31		6					
30	FB601-01-26a	1	35#	M6			
29-26	GB/T845-1985	5	Q235A	ST2.9x12			
29-25	FB501-01-36	1	ABS				
29-24		1		6.3			
29-23		3		6.3			
29-22	FI608-02-16	1					35x52x12
29-21		4	PVC	6.3			
29-20	TDL-02	1			2x1.0x0.4		
29-19		1					
29-18	FB601-01-9	1	LF6				17x4.7x14
29-17	GB/T3452.1-1992	1	70	19x2.65			
29-16	FB501-01-34	1	POM				
29-15	FB501-01-35a	1	ABS				
29-14	GB/T3452.1-1992	1	75	6.8x1.9(45°)			9x26x8
29-13	FB601-01-21	1	POM				63x2.65
29-12	FI701-01-8	1	1Cr18Ni9				HC9650BL
29-11	FI701-01-9	1	POM				6
29-10	FI701-01-26	1	LF6				6
29-9	FI701-01-4	1	3Cr13				M6x25
27	FB501-01-29	1	PP				
26	FB616-01-1	1	YL113				
25-5	FB601-01-24A	1	POM				
25-4	GB/T3452.1-1992	1	75				
25-3	FB501-01-15	1	POM				
25-2	FB601-01-27	1	1Cr18Ni9				
25-1	FB601-01-13	7	POM				
25		1					
24	GB/T3452.1-1992	7	80			9x1.8	
23-2	FB601-01-15	1	LF6				
23-1	GB/T3452.1-1992	1	80			12x2	
23		7					
22	FB601-01-18	3					
21	FB601-01-17	3	POM				
20	FB601-01-16	3	+Q235A				
19	FB601-01-2	1	YL113				
18	FB601-01-7	3	T8MnA				
17	FB601-01-8	3	4Cr13				
16	FB601-01-6	3	65Mn				
15		1					
14	GB/T70.1-2000	1	8.8			M8x20	
13	GB/T93-1987	1	65Mn			8	
12	FB601-01-5	1	YL113				
11	GB/T276-1994	1					
10	HG4-692-67	1	+Q235A				
9	FB603-01-3	1	YL113				
8	FB603-01-4	1	45#				
7	FB501-01-23	1					
6	GB/T276-1994	1					
5	GB/T3452.1-1992	2	70				
4		1					
3	GB/T95-1985	7	100Hv				
2	GB/T93-1987	7	65Mn				
1	GB/T70.1-2000	4	8.8				

							KH602-00-02

A

B





KRÜGER TECHNOLOGY S.L.  
B-82526583  
Polígono Agustinos C/G Parcela B2  
31013 Pamplona (Navarra) - ESPAÑA  
+34 948 343 393 - info@kruger.es - www.kruger.es