

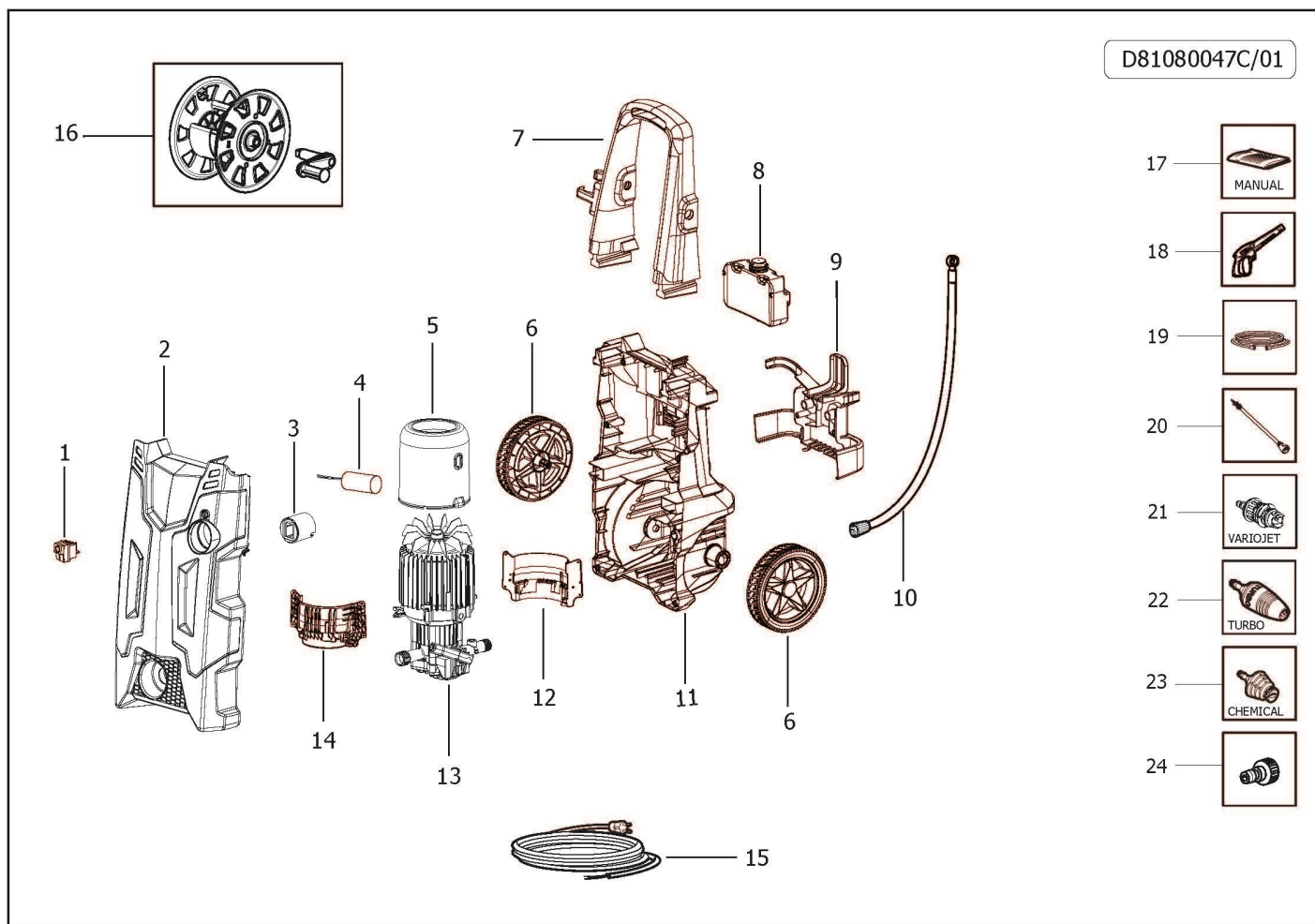
 **KRÜGER**[®]
Technology S.L.



DESPIECE KH167

Articolo: **8.108.0047C** **KH167230-240~50 -GR- TS EU C/AVV.PRO 2L**
 Tavola: **D81080047C/01** Inizio Validità **10/01/2020** Fine Validità:

Componente	Descrizione	Pos.	Tipo Man.
3.401.0178	SWITCH 0/1 BLACK BOTTON IP55 12/10	1	S
5.011.0391	ASSEMBLY CABINET+LATERAL COVER KH167/STARGATE -GREY-	2	
4.008.1817	SWITCH BOX COVER FOR IKON	3	
3.404.0017	CAPACITOR 25mF 450V D.39x94 F/M	4	
4.008.1268	AIR CONVEYOR FOR MOTOR 110H80 (D.142)	5	
4.008.2045	YELLOW WHEEL WITH BLACK COAT SPACE	6	
4.008.2153	GREY HANDLE IKON FOR HOSE REEL (RAL.7016)	7	
5.011.0274	TANK + CAP (SPACE)	8	
4.008.2025	GREY BACK ACCESSORY HOLDER SPACE (RAL.7046)	9	
4.018.0134	1/4 HOSE 225BAR L=680 FOR CONNECTION HOSE REEL/MOTORPUMP	10	S
4.013.0763	BLACK BACK CABINET FOR IKON	11	
4.008.1816	BLACK LEFT MOTOR FIX COVER IKON	12	
5.001.0813C	MOTORPUMP PT'03 110h100AL 230-240/50 8GR30 TS IN.1,7 (FAN D.127,5	13	S
4.008.1815	BLACK RIGHT MOTOR FIX COVER IKON	14	
4.012.0149C	CABLE H05VV-F 3X1 MT.5,4 SCHUKO PLUG F/F	15	S
6.005.0622	HOSE REEL KIT FOR IKON	16	
7.100.2129	MANUAL IKON W/HOSE REEL + CE 27L A5 16F	17	
6.001.0073	GUN S'09 WITH INTEGRAL QUICK JOINT	18	S
4.018.0102	HOSE 1/4 225BAR L=8000 INTEGRAL COUPLING-QUICK COUPLING FOR HOS	19	S
6.002.0361	LANCE S'12 WITHOUT NOZZLE HEAD + NOZZLE CLEANING PIN	20	S
6.002.0637	NOZZLE HEAD LANCE S'12 D.1,00 (L.BLUE) ADJUST.FAN JET W/QUICK COUP	21	S
6.002.0346	ROTOX NOZZLE HEAD LANCE S'12 D.1,025 WITH QUICK COUPLING	22	S
6.002.0641	SOAP HEAD LANCE S'12 W/QUICK COUPLING (HOLE D.4)	23	
3.100.0082C	BLACK QUICK COUPLING INLET CONNECTOR (THREAD=9.5)	24	

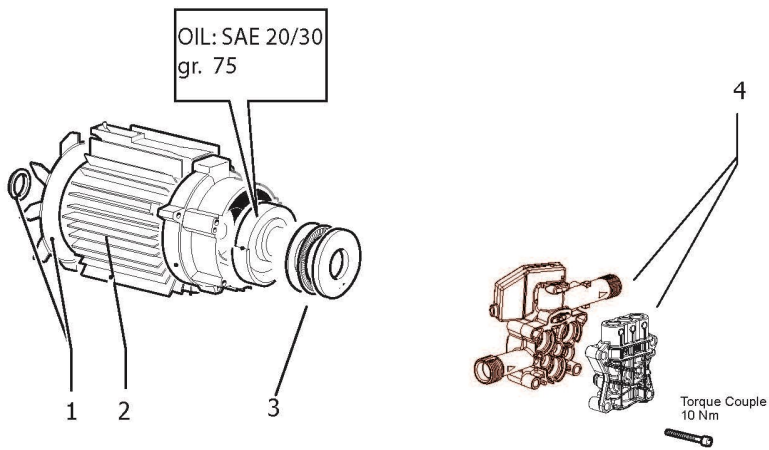


Articolo: **5.001.0813C** **MOTOP.PT'03 110h100ALL 230-240/50 8GR30 TS IN.1,7 (VENT.D.127,5)**

Tavola: **D50010004/01** Inizio Validità **02/09/2015** Fine Validità:

Componente	Descrizione	Pos.	Tipo Man.
6.005.0387	KIT 353 LW FAN + RING	1	
5.009.0981C	MOTOR ASSEMBLY 09 D110H100AL 230-240/50 +WOBBLE PLATE 8GR30	2	S
4.007.0328	THRUST BEARING 35X55X12 PT'03	3	S
5.009.0882C	BODY GUIDE+HEAD ASSEMBLED TS W/SUCTION-THREAD CAPS-PLASTIC CH	4	S

D50010004/01

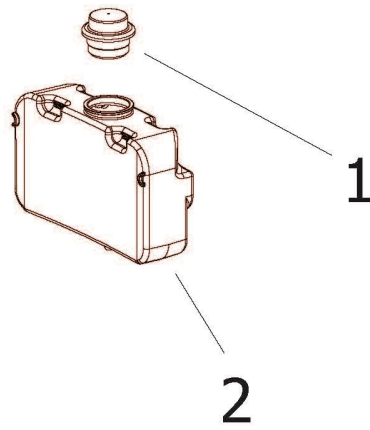


Articolo: **5.011.0274** **ASS.SERBATOIO SPACE +TAPPO**

Tavola: **D50110008/01** Inizio Validità **19/10/2016** Fine Validità:

Componente	Descrizione	Pos.	Tipo Man.
4.008.1521	BLACK PLUG FOR TANK -RAL.9011- (80007138)	1	
4.008.1776	NEUTRAL TANK SPACE	2	

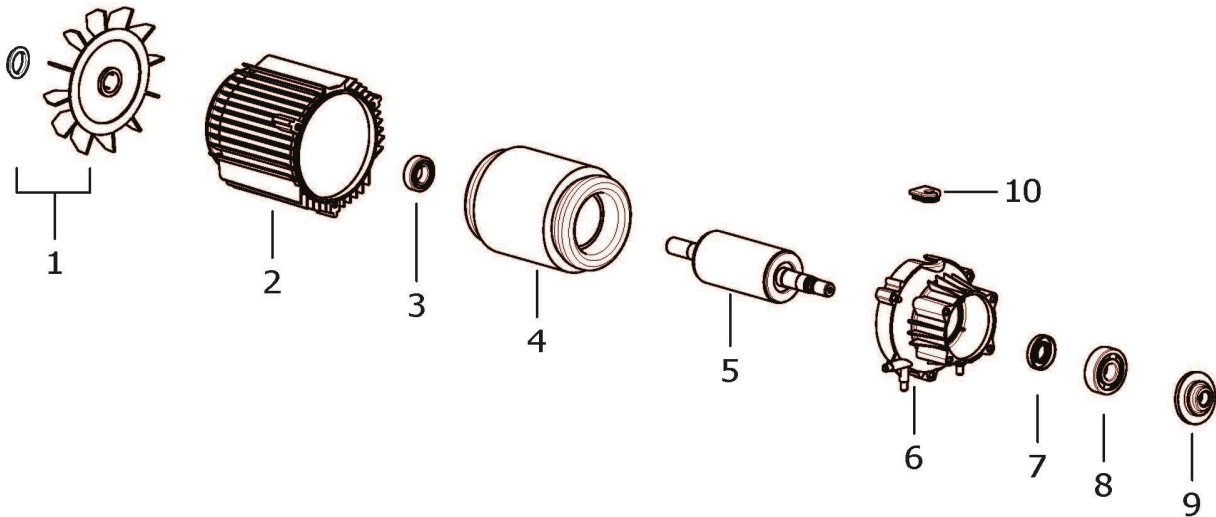
D50110008/01



Articolo: **5.009.0981C** **ASS.MOT.09 D110H100ALL 230-240/50 2P C/TER. PT03 +PIATT.8GR30**Tavola: **D50090981C/01** Inizio Validità **17/09/2019** Fine Validità:

Componente	Descrizione	Pos.	Tipo Man.
6.005.0619	KIT FAN + RING FOR MOTOR D.110	1	
4.005.0352C	CASING'10 110 H100	2	
3.001.0107	BALL BEARING 6202 2RS (17x35x10)	3	
5.003.0113C	STATOR FOR 110H100AL 230-240/50	4	
5.005.0071C	ROTOR FOR 110H100AL	5	
4.005.0353C	MOTOR FLANGE D.110-'10 PT'03 WITHOUT THREAD	6	
3.201.0081	OIL SEALING RING D. 20X35X7	7	
3.001.0030	RADIAL	8	
4.005.0278	WOBBLE PLATE 8'30 PT'03	9	
4.008.1233	CABLE HOLDER PT'03-10	10	

D50090981C/01

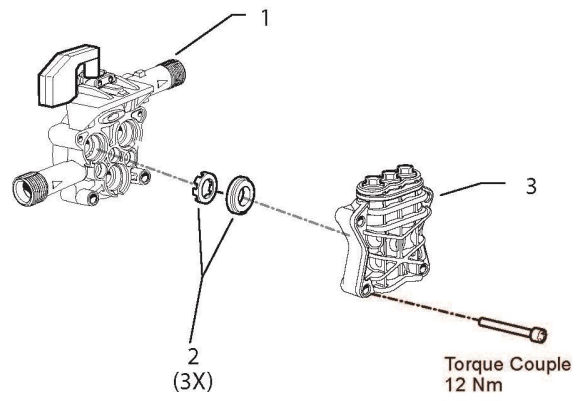


Articolo: **5.009.0882C** **GRUPPO C.GUIDA C/TS 13KG-ASP.+TEST.TAPPI FIL. (PT'03)**

Tavola: **D50090010/01** Inizio Validità **17/09/2015** Fine Validità:

Componente	Descrizione	Pos.	Tipo Man.
5.007.0187C	PISTON BODY GUIDE PT'03 W/TS-SUCTION 13KG (40050260)	1	
6.005.0282	KIT 257 O-RING SEAL	2	
5.008.0265C	PT'03 HEAD W/ALUM.THREAD CAPS	3	

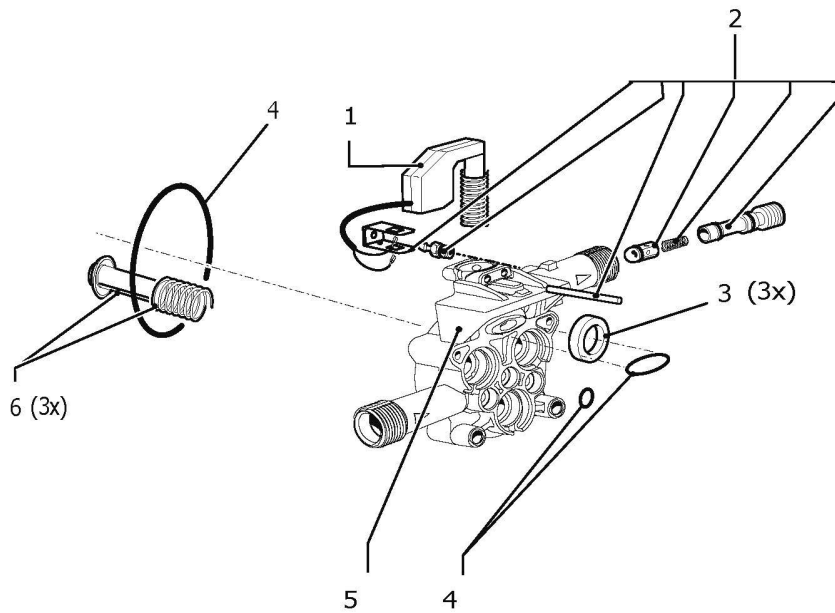
D50090010/01



Articolo: **5.007.0187C** **CORPO GUIDA PT'03 PIST.D.12 C/ TS-ASP.-VALV.COMP.-M.13KG**Tavola: **D50070003/01** Inizio Validità **31/08/2015** Fine Validità:

Componente	Descrizione	Pos.	Tipo Man.
5.009.0716	COMPLETED VALVE TS PT'03 CABLE L=530 SPRING 13KG (WHITE FASTON C	1	
6.005.0183	KIT 169 LW INJECTOR 1,7	2	S
6.005.0079	KIT 79 LW OIL SEALS	3	O
6.005.0226	KIT 209 O-RING	4	O
4.005.0263C	PISTON BODY GUIDE PT'03 WITH SUCTION VALVE	5	
6.005.0181	KIT 167 LW PISTON	6	S

D50070003/01

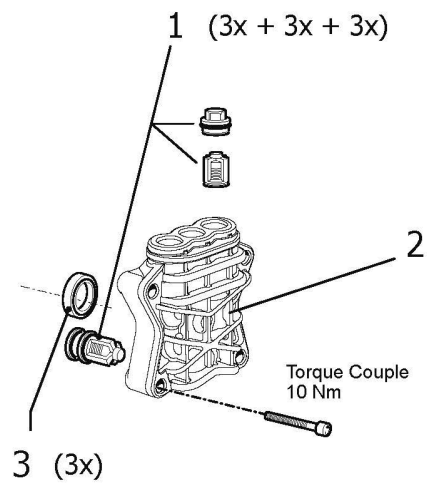


Articolo: **5.008.0265C** TESTATA PT'03 D.12 C/TAPPI FIL.ALL.

Tavola: **D50080033/01** Inizio Validità **17/09/2015** Fine Validità:

Componente	Descrizione	Pos.	Tipo Man.
6.005.0595	KIT HEAD VALVE KIT +CAPS PT'03	1	
4.005.0296C	PT'03 HEAD WITH THREAD FOR VALVE CAPS	2	
6.005.0133	KIT 124 O-RING WATER SEAL PARTNER D.12	3	0

D50080033/01





Pol. Agustinos C/ G, Parcela B2
31013 Pamplona (NAVARRA)
+34 948 343 393
+34 948 318 453
info@kruger.es