

 **KRÜGER**<sup>®</sup>  
Technology S.L.

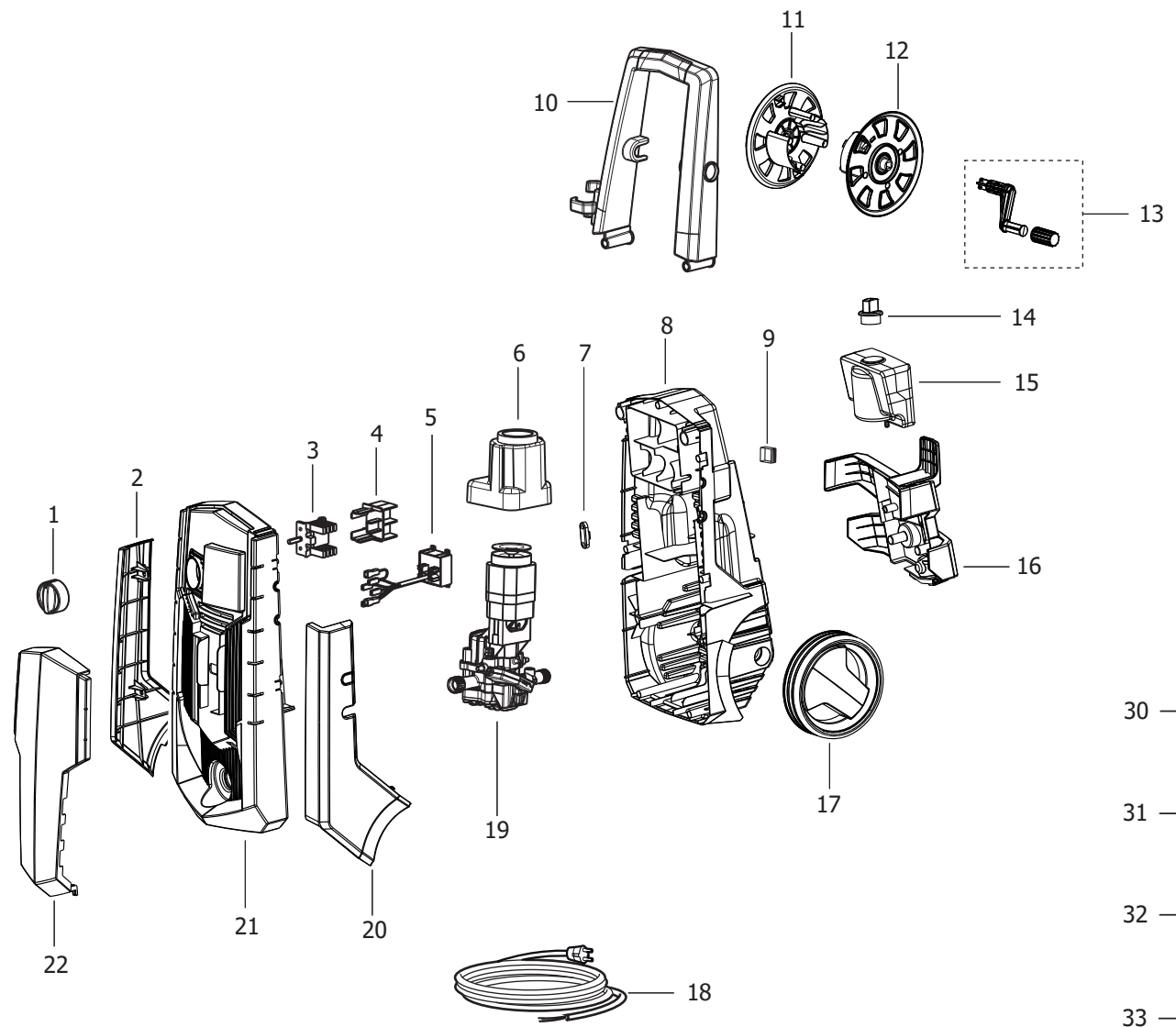












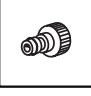
**DESPIECE KH148**

8.101.0017C - KRÜGER TECHNOLOGY - KH148 220-240~50/60 -V/N- TS EU C/AVV.+2SPAZZ. -.....	3
R81010017C - KH148 220-240~50/60 -V/N- TS EU C/AVV.+2SPAZZ. ....	4
R50010932C - MTP.SP.PT'03 230/50 7'10 C/TERM.-ASP. TS 14.5KG TEST.T.FIL. (8850-WPS).....	7
R50090997C - GRUPPO C.GUIDA C/TS 14.5KG-ASP.+TEST.TAPPI FIL. PT'03-TPAV.....	9
R50070281C - CORPO GUIDA PT'03 C/TS 14.5KG-ASP.....	11
R50080298C - TESTATA PT'03 (TPAV) D.12 C/TAPPI FIL.ALL.....	13
Components index.....	15

Pos.	Code	Description
0	R81010017C	KH148 220-240~50/60 -V/N- TS EU C/AVV.+2SPAZZ. -KRÜGER

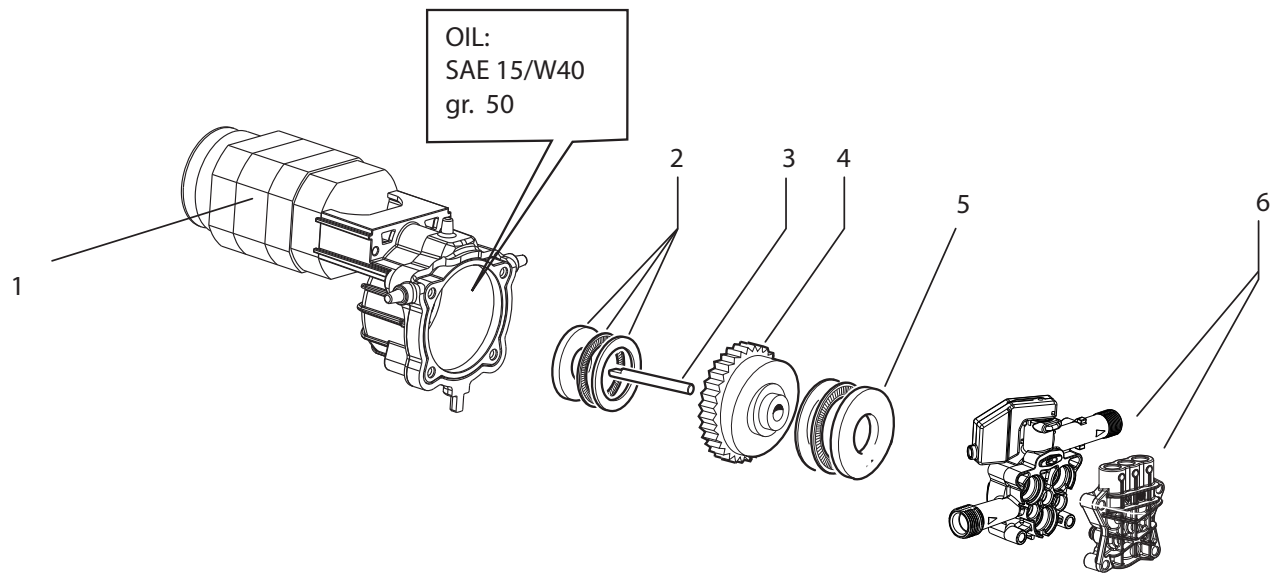
D81010017C/01



- 30 —  MANUAL
- 31 —  PENCIL
- 32 —  COIL SPRING
- 33 —  SCREWDRIVER
- 34 —  CHEMICAL
- 35 —  VARIOJET
- 36 —  TURBO
- 37 —  ECO
- 38 —  BRUSH
- 39 —  BRUSH
- 40 —  WASHER

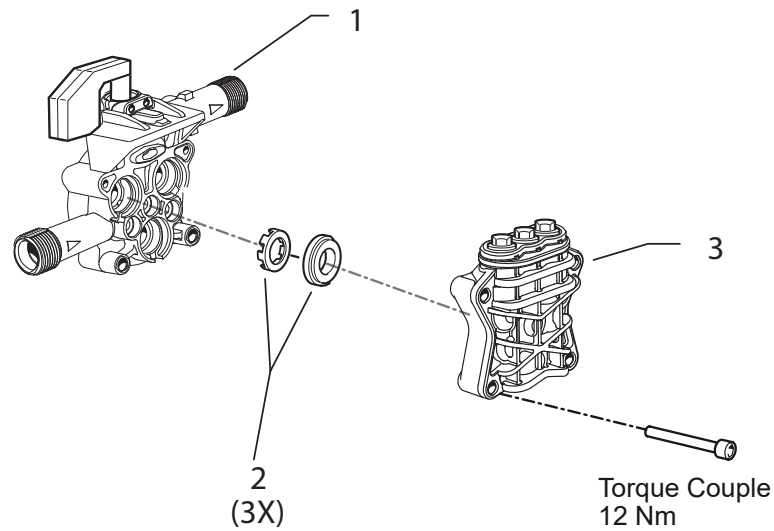
Pos.	Code	Substituted by	Q.ty	Purchasable	Min. Q.ty		For mainten.	Description
0	R50010932C		1	No				MTP.SP.PT'03 230/50 7'10 C/TERM.-ASP. TS 14.5KG TEST.T.FIL. (8850-WPS)
001	4.008.1915		1	Yes	1			MANOPOLA INTERRUTTORE KH148 -R- RAL.3020
002	4.008.1704		1	Yes	1			LATERAL LEFT SHELL PASCAL -GREY RAL.7046-
003	3.401.0235		1	Yes	1			INTERRUTTORE ROTATIVO PER REG.3 VELOCITA' IDRO 230V (new)
004	4.008.1914		1	Yes	1			SUPPORTO INTERRUTTORE KH148
005	3.403.0374		1	Yes	1			SCHEDA ELETTRICA X REG.VELOCITA' IDRO 230V C/ANTID.-CAVI L=280mm (new)
006	4.008.0721		1	Yes	1			DX MOTOR CONVEYER
007	4.008.0277		1	Yes	1			FIX PAD CABLE HOLDER
008	4.013.0724		1	Yes	1			BACK SIDE CABINET PASCAL -BLACK- (BRUSH MOTOR)
009	5.009.1123		1	Yes	1			TAPPO CHIUSURA FORO INTERR.CARENA PASCAL C/OR -NERO-
010	5.011.0389		1	Yes	1			ASSIEME MANICO ALTO PASCAL(X AVV.) + PLACCHETTA -V-
011	4.008.1484		1	Yes	1			BLACK HALF HOSE SIDE REEL WITHPIN RAL.9011 020567/020561 (8
012	4.008.1483		1	Yes	1			BLACK HALF LEVER SIDE REEL RAL.9011 FOR 020567/020561 (800071
013	5.011.0379		1	Yes	1			ASSIEME MANOVELLA KH148 -V- PANT.802C
014	4.608.0027		1	Yes	1			BLACK PLUG D.30 FOR TANK
015	4.008.1340		1	Yes	1			NEUTRAL TANK WAVE
016	4.008.2075		1	Yes	1			PORTACCESSORI PASCAL -V- PANT.802C
017	4.008.1895		2	Yes	1			RUOTA STM/i-CLEAN RIVESTITA -N/V- PANT.802C (P80.0502)
018	4.012.0357		1	Yes	1			CAVO H05VV-F 2X1,5 MT.5,4 SP.SCHUKO ANTISPRUZZO F/F -V- PANT.802C
019	5.001.0932C		1	Yes	1		EXT	MTP.SP.PT'03 230/50 7'10 C/TERM.-ASP. TS 14.5KG TEST.T.FIL. (8850-WPS)
020	4.008.1703		1	Yes	1			LATERAL RIGHT SHELL PASCAL -GREY RAL.7046-
021	4.013.0725		1	Yes	1			FRONT SIDE CABINET PASCAL -BLACK- (BRUSH MOTOR)
022	4.008.2020		1	Yes	1			COPERTURA ANTERIORE KH148 -V- PANT.802C C/ TAMP.-KRÜGER-
030	7.100.2176C		1	Yes	1			MANUALE SPECIFICO KH148 WPS +CE KRÜGER 28L A5
031	6.001.0117		1	Yes	1		EXT	PISTOLA S'09 C/ATTACCO RAPIDO INTEGR. C/LEVA -V- PANT.802C KRÜGER

Pos.	Code	Substituted by	Q.ty	Purchasable	Min. Q.ty		For mainten.	Description
032	4.018.0096		1	Yes	1		EXT	HOSE 1/4 180BAR L=8000 M22x1,5D.15-RAPID FIX
033	6.002.0361		1	Yes	1		EXT	LANCIA S'12 S/TESTINA C/ATT.RAP.-COGETIL + SPILLO
034	6.002.0634		1	Yes	1		EXT	SOAP HEAD LANCE S'12 W/QUICK COUPLING
035	6.002.0637		1	Yes	1		EXT	NOZZLE HEAD LANCE S'12 D.1,00(L.BLUE) ADJUST.FAN JET W/QUIC
036	6.002.0347		1	Yes	1		EXT	ROTOX NOZZLE HEAD LANCE S'12 D.1,1 WITH QUICK COUPLING
037	6.002.0371		1	Yes	1		EXT	TESTINA LANCIA S'12 -V- D.1,2 (ROSSO) C/ATT.RAP. (GETTO VENTAGLIO)
038	3.601.0033		1	Yes	1			FIX BRUSH WITH ADAPT.REINFORCED COGETIL
039	3.601.0035	3.601.0074	1	Yes	1			ROTATING HYDRO BRUSH W/HANDLE
040	3.100.0082C		1	Yes	1			BLACK QUICK COUPLING INLET CONNECTOR (THREAD=9.5)



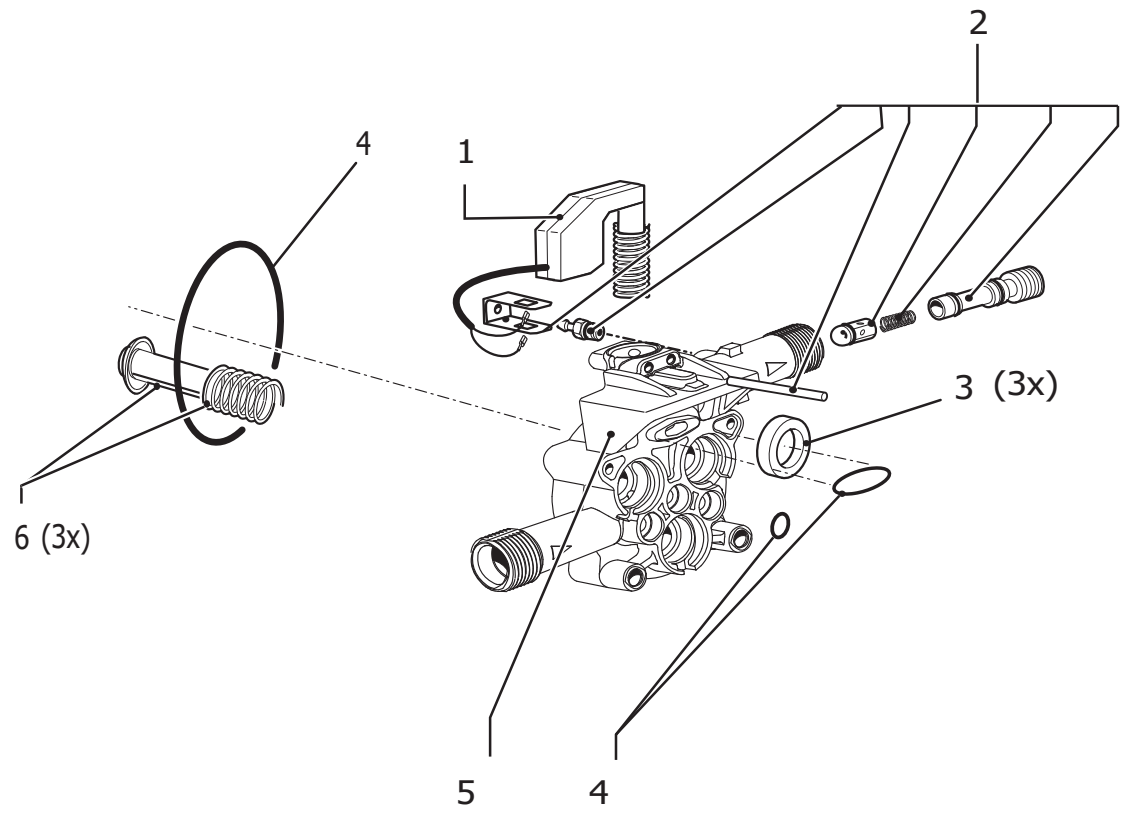
Pos.	Code	Substituted by	Q.ty	Purchasable	Min. Q.ty		For mainten.	Description
0	R50090997C		1	No				GRUPPO C.GUIDA C/TS 14.5KG-ASP.+TEST.TAPPI FIL. PT'03-TPAV
001	5.009.1077		1	Yes	1		EXT	ASS.MOT.SPAZZ.03 230/50 C/TERM.17AM-D 140G (8850)-WPS-
002	6.005.0180		1	Yes	1		EXT	KIT 166 FOOTSTEP BEARING 3047PT' 03-SD
003	4.007.0205		1	Yes	1			PIN 10X70
004	5.009.1020		1	Yes	1			ASSIEME PIATTELLO 7'10 PT'03 C/INS.PL. +CORONA Z 50
005	4.007.0328		1	Yes	1		EXT	THRUST BEARING 35X55X12 PT'03
006	5.009.0997C		1	Yes	1		EXT	BODY GUIDE+HEAD(TPAV) W/TS-SUCTION-THREAD CAPS-PLASTIC CHECK



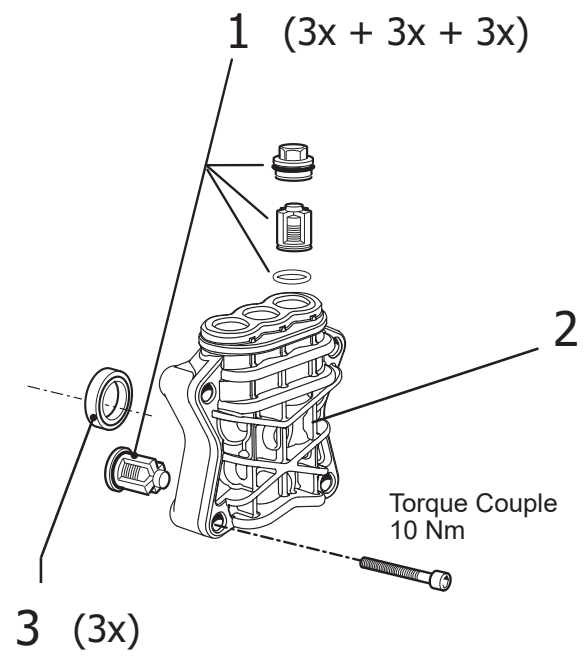


Pos.	Code	Substituted by	Q.ty	Purchasable	Min. Q.ty		For mainten.	Description
0	R50070281C		1	No				CORPO GUIDA PT'03 C/TS 14.5KG-ASP.
0	R50080298C		1	No				TESTATA PT'03 (TPAV) D.12 C/TAPPI FIL.ALL.
001	5.007.0281C		1	Yes	1			CORPO GUIDA PT'03 C/TS 14.5KG-ASP.
002	6.005.0282		1	Yes	1			KIT 257 O-RING SEAL
003	5.008.0298C		1	Yes	1			PT'03 HEAD D.12 W/THREAD CAPS(TPAV - ALUM.CAPS)

D50070003/01



Pos.	Code	Substituted by	Q.ty	Purchasable	Min. Q.ty		For mainten.	Description
001	5.009.1022		1	Yes	1			ASSIEME V.COMP. C/TS PT'03 CAVO L=530 MOLLA 14.5KG (COPRIF.BIANCO)
002	6.005.0183		1	Yes	1		EXT	KIT 169 LW INJECTOR 1,7
002	6.005.0277		1	Yes	1		EXT	KIT 252
003	6.005.0079		1	Yes	1		ORD	KIT 79 LW OIL SEALS
004	6.005.0226		1	Yes	1		ORD	KIT 209 O-RING
005	4.005.0263C	4.005.0263	1	Yes	1			PISTON BODY GUIDE PT'03 WITH SUCTION VALVE
005	4.008.1176		1	Yes	1			GASKET PISTON BODY GUIDE-HEADPT'03 29.7X12.9X2.7
006	6.005.0181		1	Yes	1		EXT	KIT 167 LW PISTON



Pos.	Code	Substituted by	Q.ty	Purchasable	Min. Q.ty		For mainten.	Description
001	6.005.0315		1	Yes	1			KIT 287 SUCTION/DELIVERY VALVE+ BRASS THREAD CAPS PT'03
002	4.005.0302		1	Yes	1			PT'03 HEAD WITH THREAD FOR VALVE CAPS (TPAV)
003	6.005.0133		1	Yes	1		ORD	KIT 124 O-RING WATER SEAL PARTNER D.12
004	3.201.0020		3	Yes	1			WATER SEAL 12X18X5

Code	Parts Table	Pos.	Q.ty
3.100.0082C	R81010017C	040	1
3.201.0020	R50080298C	004	3
3.401.0235	R81010017C	003	1
3.403.0374	R81010017C	005	1
3.601.0033	R81010017C	038	1
3.601.0035	R81010017C	039	1
4.005.0263C	R50070281C	005	1
4.005.0302	R50080298C	002	1
4.007.0205	R50010932C	003	1
4.007.0328	R50010932C	005	1
4.008.0277	R81010017C	007	1
4.008.0721	R81010017C	006	1
4.008.1176	R50070281C	005	1
4.008.1340	R81010017C	015	1
4.008.1483	R81010017C	012	1
4.008.1484	R81010017C	011	1
4.008.1703	R81010017C	020	1
4.008.1704	R81010017C	002	1
4.008.1895	R81010017C	017	2
4.008.1914	R81010017C	004	1
4.008.1915	R81010017C	001	1
4.008.2020	R81010017C	022	1
4.008.2075	R81010017C	016	1
4.012.0357	R81010017C	018	1
4.013.0724	R81010017C	008	1
4.013.0725	R81010017C	021	1
4.018.0096	R81010017C	032	1
4.608.0027	R81010017C	014	1
5.001.0932C	R81010017C	019	1
5.007.0281C	R50090997C	001	1
5.008.0298C	R50090997C	003	1

Code	Parts Table	Pos.	Q.ty
5.009.0997C	R50010932C	006	1
5.009.1020	R50010932C	004	1
5.009.1022	R50070281C	001	1
5.009.1077	R50010932C	001	1
5.009.1123	R81010017C	009	1
5.011.0379	R81010017C	013	1
5.011.0389	R81010017C	010	1
6.001.0117	R81010017C	031	1
6.002.0347	R81010017C	036	1
6.002.0361	R81010017C	033	1
6.002.0371	R81010017C	037	1
6.002.0634	R81010017C	034	1
6.002.0637	R81010017C	035	1
6.005.0079	R50070281C	003	1
6.005.0133	R50080298C	003	1
6.005.0180	R50010932C	002	1
6.005.0181	R50070281C	006	1
6.005.0183	R50070281C	002	1
6.005.0226	R50070281C	004	1
6.005.0277	R50070281C	002	1
6.005.0282	R50090997C	002	1
6.005.0315	R50080298C	001	1
7.100.2176C	R81010017C	030	1



Pol. Agustinos C/ G, Parcela B2  
31013 Pamplona (NAVARRA)  
+34 948 343 393  
+34 948 318 453  
info@kruger.es