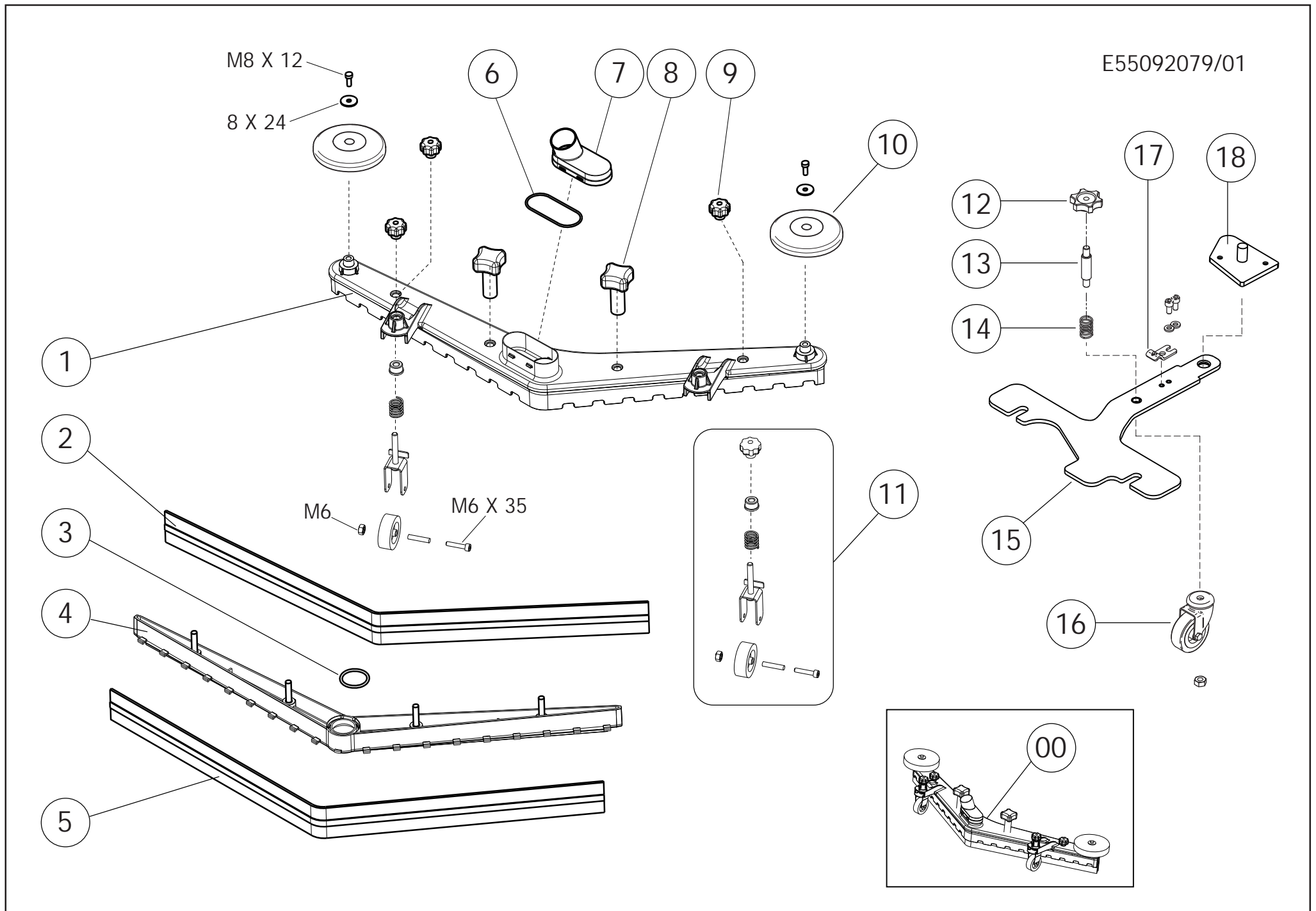




DESPIECE TÉCNICO
FREGADORA HOMBRE A PIE

KFL50E





LISTA RICAMBI

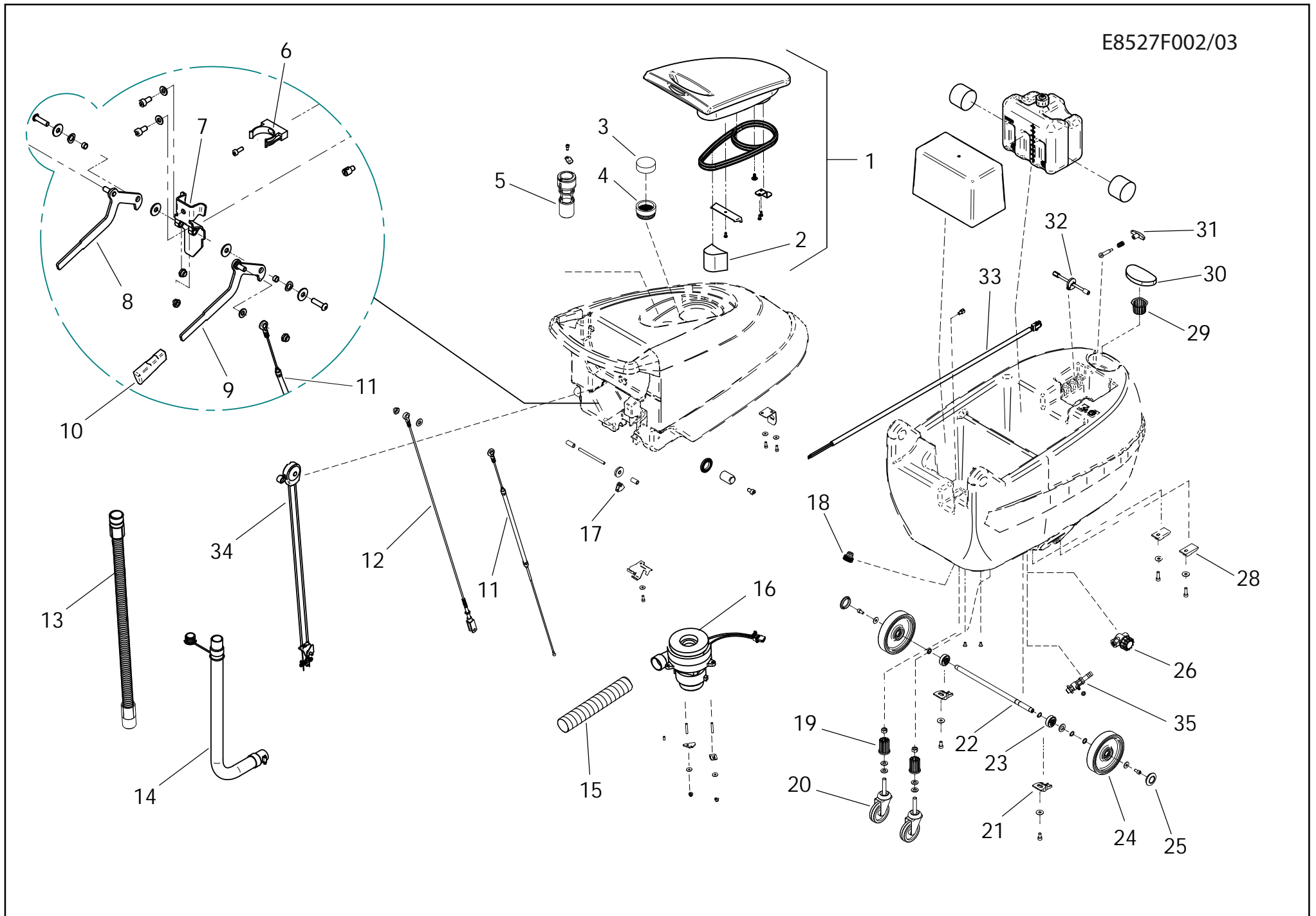
CODICE: 8.527.0003 REV.: 3 DESCRIZIONE: **KFL50E**

DATA INIZIO VAL.: 03/31/2014 DATA FINE VAL.: 01/01/3000

CODICE GRUPPO: R55092079 REV.: 1 DESCRIZIONE: SQUEEGEE

DATA INIZIO VAL.: 02/15/2012 DATA FINE VAL.: 01/01/3000 N. TAVOLA: E55092079/01

CODICE:	DESCRIZIONE:	QTA':	POS:	ORD	EXTR.
5.511.1795	SQUEEGEE ASSY	1	00		
4.505.0866	SQUEEGEE L=780 MM SANDBLAST AND CATAPHORESIS TREATMENT	1	01		
4.508.X468	FRONT SQUEEGEE BLADE L.830 TH.2,5	1	02	X	
3.200.0168	O-RING 4143	1	03		
4.508.0505	SQUEEGEE BLADES HOLDER	1	04		
4.508.X467	REAR SQUEEGEE BLADE L.870 TH.3	1	05	X	
3.200.0172	O-RING 3275	1	06		
4.508.1552C	SQUEEGEE SUCTION COMPARTMENT COVER	1	07		
3.099.1265	KNOB D.52 M8	2	08		
3.099.0467	KNOB M8	4	09		
4.508.0224	BUMPER WHEEL D.110 GREY	2	10		X
5.511.1823	SQUEEGEE WHEEL ASSEMBLY	2	11		X
3.099.1189	KNOB M8 H26	1	12		
4.507.1385	ADJUSTING PIN	1	13		
4.507.1076	SPRING	1	14		
4.507.1478	SQUEEGEE SUPPORT	1	15		
3.006.0076	SQUEEGEE WHEEL (D.50)	1	16		X
4.507.0854	BRACKET FOR SQUEEGEE LIFT CABLE	1	17		
5.513.0299	SQUEEGEE SUPPORT PIN	1	18		



LISTA RICAMBI

CODICE: 8.527.0003 REV.: 3 DESCRIZIONE: KFL50E

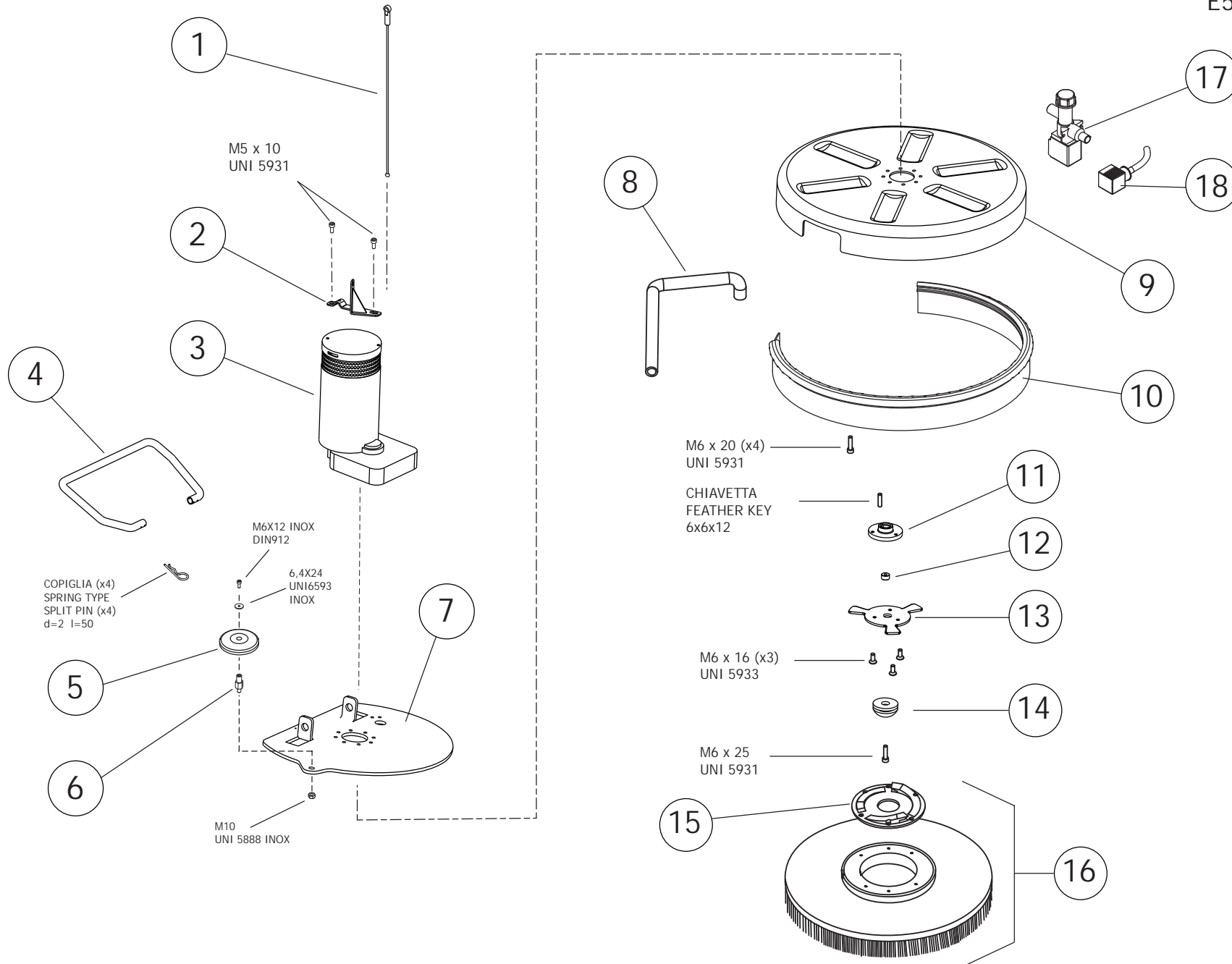
DATA INIZIO VAL.: 03/31/2014 DATA FINE VAL.: 01/01/3000

CODICE GRUPPO: R55092096 REV.: 3 DESCRIZIONE: TANK COMPONENTS

DATA INIZIO VAL.: 03/31/2014 DATA FINE VAL.: 01/01/3000 N. TAVOLA: E8527F002/03

CODICE:	DESCRIZIONE:	QTA':	POS:	ORD	EXTR.
5.511.1657	TANK COVER ASSEMBLY	1	01		
4.508.0766	MT. 8 1/4 CONNECTION H.P. HOSE AIRFOAM GASKET	1	02	X	
4.508.0768	CIRCULAR AIRFOAM GASKET	1	03	X	
4.508.0770	RUBBER FILTER SWIFT B/E	1	04		
5.511.1656	FLOAT ASSEMBLY	1	05		
3.099.0343	HOSE HOLDER D. 40	1	06		
5.513.0134	LEVER SUPPORT	1	07		
5.513.0133	BRUSH PLATE LIFTING ASSEMBLY	1	08		
5.513.0132	SQG LIFTING LEVER ASSEMBLY	1	09		
4.508.0971	HANDLE SPECIAL LEVEL (15X4)	2	10		
3.099.1329	SQUEEGEE LIFT CABLE	1	11		X
3.099.0881	CABLE D.2,5x133 L=685	1	12		X
5.509.0629	SUCTION HOSE ASSEMBLY	1	13		X
5.511.1655	EXHAUST PIPE ASSEMBLY	1	14		X
3.752.0167	AIR PIPE D.51 LENGHT 300mm	1	15		
5.511.1659	INTAKE MOTOR ASSEMBLY FOR ELECTRIC SWIFT/FREE	1	16		X
4.506.0142	PULLEY FORK	1	17		
5.511.0937	TANK DRAIN CAP ASSY	1	18		X
4.508.0866	WHEEL SUPPORT - SWIF B	2	19		
3.006.0128	REVOLVING WHEEL D.80 OIL-PROOF +SCREW M12X80	2	20		X
4.508.0689	FIXING WHEEL AXLE - SWIFT B	2	21		
4.507.0922	WHEEL SHAFT - SWIFT B	1	22		
4.508.0687	AXLE SUPPORT - SWIFT B	2	23		
3.006.0109	WHEEL D.160	2	24		X
3.099.1066	CAP FOR WHEEL - GREY	2	25		
3.102.0026	WATER FILTER WITHOUT FLOW REGULATOR	1	26		X
4.507.0793	LEVER SUPPORT PLATE - SWIFT B	2	28		
4.508.1064	DETERGENT TANK FILTER FOR SWIFT/FLICK	1	29		
4.508.0739	SPONGE FILTER	1	30	X	
3.099.0307	HANDLE FOR TIE ROD BLACK MODEL MT/58/FFC-M6	1	31		
5.511.0991	BRUSH PLATE LIFTING AXLE ASSEM BLY	1	32		
3.499.0434	BRUSH MOTOR CABLING FREE BM/BT	1	33		
3.099.1249	COMPLETE CONTROL WATER FREE	1	34		X
3.099.0868	BALL VALVE 3/8" F/F WITHOUT HANDLE	1	35		

E55092141/01



LISTA RICAMBI

CODICE: 8.527.0003 REV.: 3 DESCRIZIONE: **KFL50E**

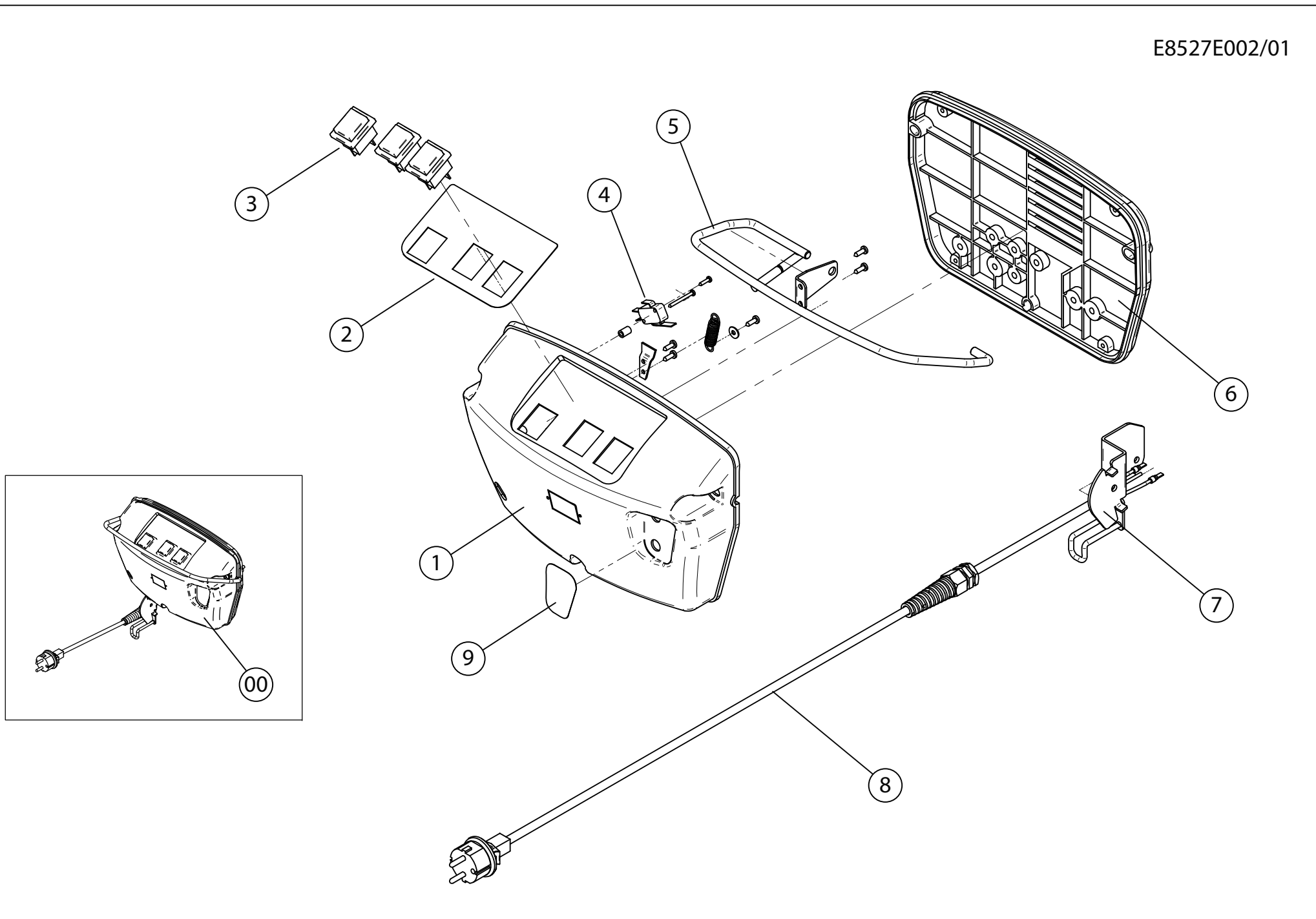
DATA INIZIO VAL.: 03/31/2014 DATA FINE VAL.: 01/01/3000

CODICE GRUPPO: R55092141 REV.: 1 DESCRIZIONE: BRUSH PLATE

DATA INIZIO VAL.: 03/31/2014 DATA FINE VAL.: 01/01/3000 N. TAVOLA: E55092141/01

CODICE:	DESCRIZIONE:	QTA':	POS:	ORD	EXTR.
3.099.1730	S/S CABLE L=240mm	1	01		X
4.507.1482	BRACKET FOR MOTOR LIFTING CABLE-KFL50E	1	02		
5.501.0084	MOTOR+GEARBOX 230V AC 550W 3,7A 160RPM (HY-183J)	1	03		X
4.507.1465	BRUSH PLATE LIFTING BAR - KFL50E	1	04		
4.508.0224	BUMPER WHEEL D.110 GREY	1	05		X
4.507.0308	SUPPORT FOR BUMPER WHEEL	1	06		
4.507.1463	BRUSH PLATE	1	07		
3.099.0865	HOSE ARMONVILLE D.int.=14 L=58 0	1	08		
4.508.1543	BRUSH COVER 50CM	1	09		
4.508.1554	BUMPER FREE EKO	1	10		X
4.507.1470	BUSHING	1	11		
4.507.1469	BUSHING	1	12		
4.507.0300	BRUSH COUPLING	1	13		
5.511.0867	BRUSH COUPLING ASSEMBLY	1	14		
4.508.1192	UNIFIED FLANGE FOR BRUSH COUPLING	1	15		X
5.511.1097	PPL BRUSH 480 MM. W/UNIFIED COUPLING FLANGE	1	16	X	
3.412.0047	SOLENOID VALVE 220-230V	1	17		
4.512.0097	CABLE 3x1 L=1150mm	1	18		

E8527E002/01



LISTA RICAMBI

CODICE: 8.527.0003 REV.: 3 DESCRIZIONE: **KFL50E**

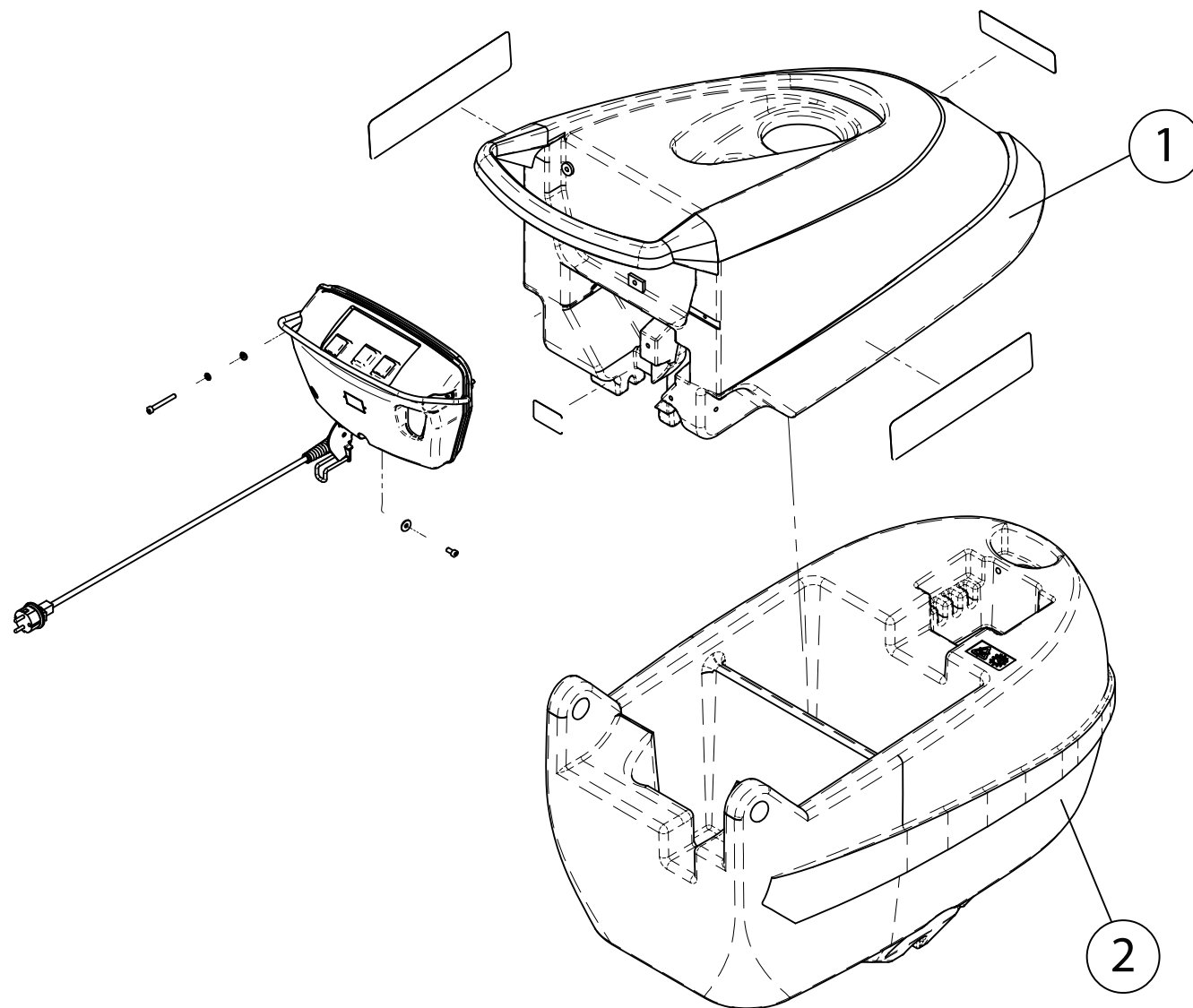
DATA INIZIO VAL.: 03/31/2014 DATA FINE VAL.: 01/01/3000

CODICE GRUPPO: R55111309 REV.: 1 DESCRIZIONE: CONTROLS

DATA INIZIO VAL.: 06/29/2007 DATA FINE VAL.: 01/01/3000 N. TAVOLA: E8527E002/01

CODICE:	DESCRIZIONE:	QTA':	POS:	ORD	EXTR.
5.511.1309	ELECTRIC BOX - NOX	1	00		
4.508.0621	CAP FOR ELECTRIC BOX	1	01		
7.503.0138	STICKER FOR DASHBOARD SCL EASY -R (E) LWS	1	02		
5.009.0213	SWITCH WITH PROTECTION 12(10)	3	03		X
3.401.0113	MICROSWITCH SAIA XGO2-88-J24	1	04		X
4.507.0706	LEVER	1	05		
4.508.0397	ELECTRIC BOX SUPPORT	1	06		
4.507.1211	SUPPORT FOR WATER OUTLET CONTR OL DEVICE - FREE E	1	07		
4.512.0073	MAINS SUPPLY CABLE CM. 80 WIT H SCHUKO PLUG	1	08		X

E8527A002/01



LISTA RICAMBI

CODICE: 8.527.0003 REV.: 3 DESCRIZIONE: **KFL50E**

DATA INIZIO VAL.: 03/31/2014 DATA FINE VAL.: 01/01/3000

CODICE GRUPPO: R8527AC02 REV.: 1 DESCRIZIONE: ACCESSORIES/COMPONENTS - E/GR

DATA INIZIO VAL.: 04/24/2012 DATA FINE VAL.: 01/01/3000 N. TAVOLA: E8527A002/01

CODICE:	DESCRIZIONE:	QTA':	POS:	ORD	EXTR.
4.508.0780	RECOVERY TANK - LIGHT GREY	1	01		
4.508.0477	SOLUTION TANK SWIFT B - GREY	1	02		



KRÜGER TECHNOLOGY S.L.
B-82526583
Polígono Agustinos C/G Parcela B2
31013 Pamplona (Navarra) - ESPAÑA
+34 948 343 393 - info@kruger.es - www.kruger.es