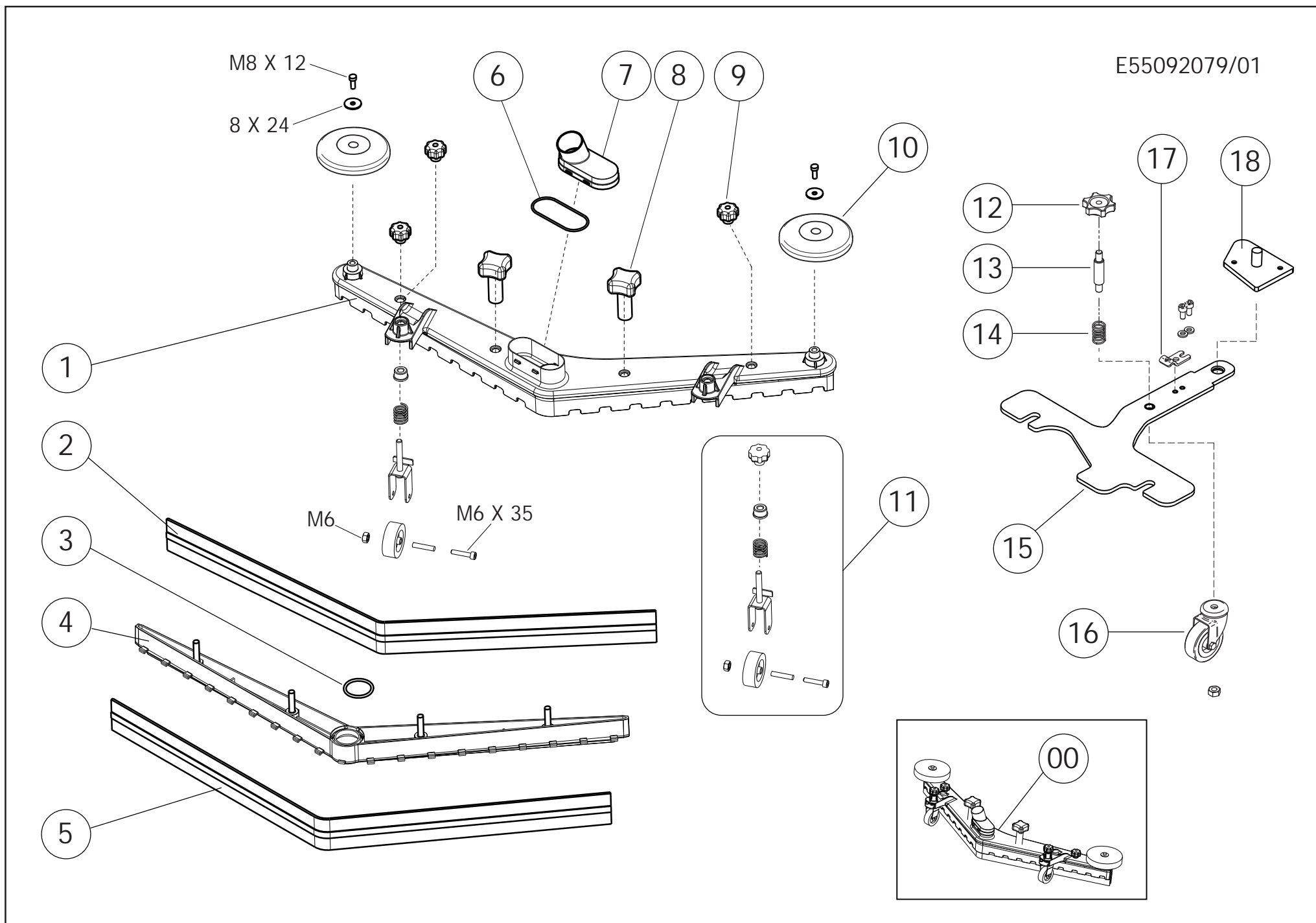




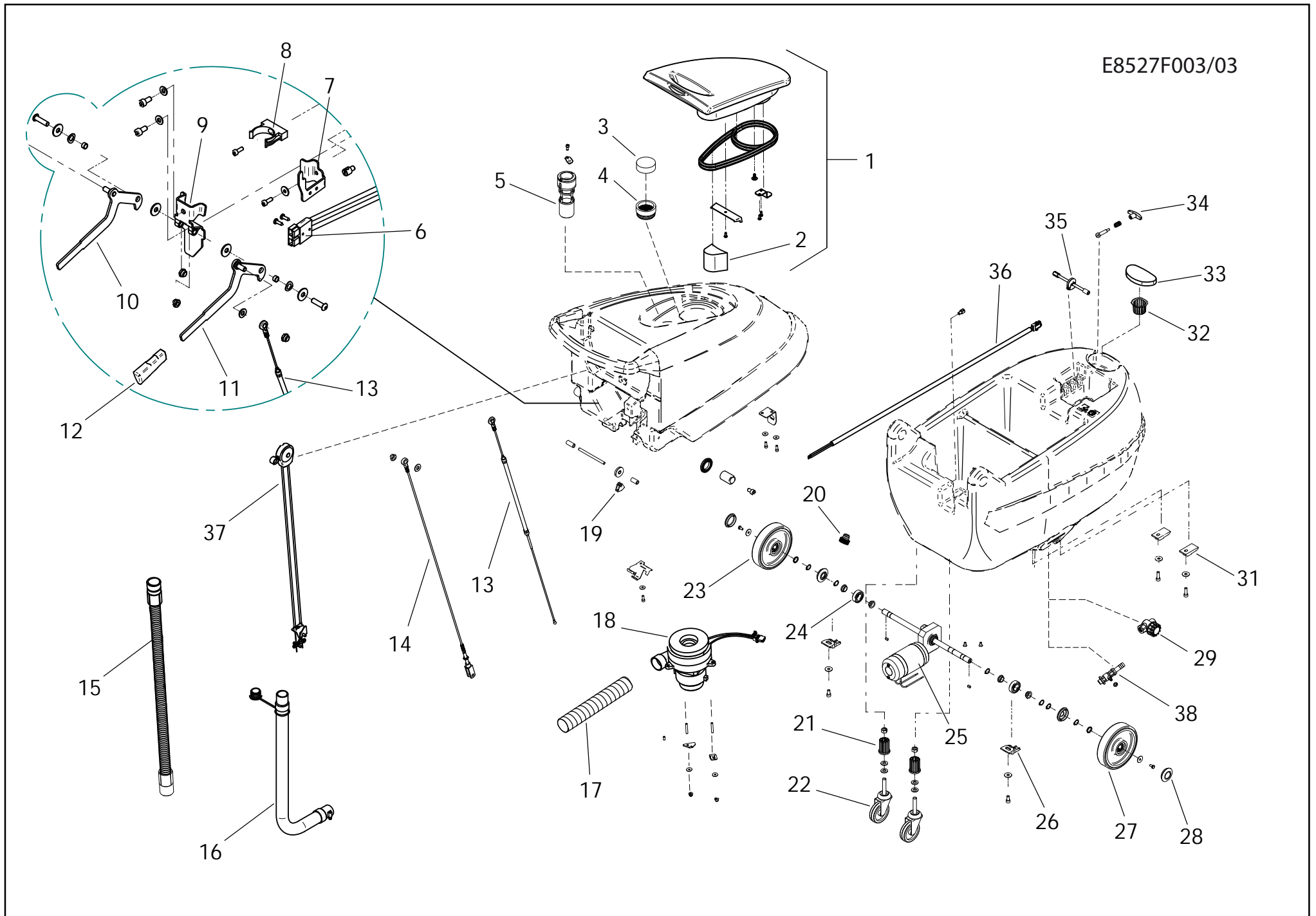
DESPIECE TÉCNICO
FREGADORA HOMBRE A PIE
KFL50BBCTR





LISTA RICAMBI**CODICE:** 8.527.0012 **REV.:** 3 **DESCRIZIONE:** KFL50BBCTR**DATA INIZIO VAL.:** 03/31/2014 **DATA FINE VAL.:** 01/01/3000**CODICE GRUPPO:** R55092079 **REV.:** 1 **DESCRIZIONE:** SQUEEGEE**DATA INIZIO VAL.:** 02/15/2012 **DATA FINE VAL.:** 01/01/3000 **N. TAVOLA:** E55092079/01

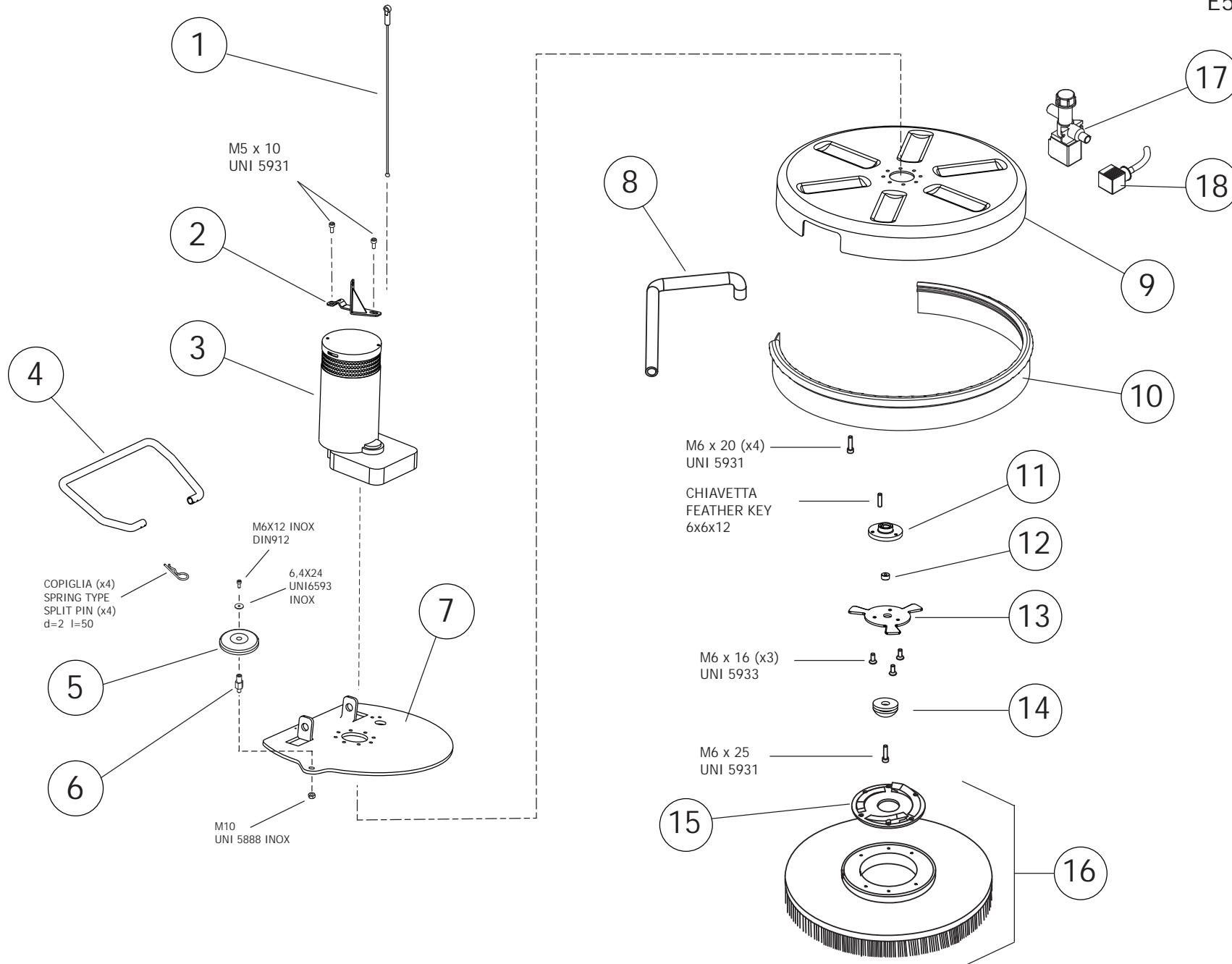
CODICE:	DESCRIZIONE:	QTA':	POS:	ORD	EXTR.
5.511.1795	SQUEEGEE ASSY	1	00		
4.505.0866	SQUEEGEE L=780 MM SANDBLAST AND CATAPHORESIS TREATMENT	1	01		
4.508.X468	FRONT SQUEEGEE BLADE L.830 TH.2,5	1	02	X	
3.200.0168	O-RING 4143	1	03		
4.508.0505	SQUEEGEE BLADES HOLDER	1	04		
4.508.X467	REAR SQUEEGEE BLADE L.870 TH.3	1	05	X	
3.200.0172	O-RING 3275	1	06		
4.508.1552C	SQUEEGEE SUCTION COMPARTMENT COVER	1	07		
3.099.1265	KNOB D.52 M8	2	08		
3.099.0467	KNOB M8	4	09		
4.508.0224	BUMPER WHEEL D.110 GREY	2	10		X
5.511.1823	SQUEEGEE WHEEL ASSEMBLY	2	11		X
3.099.1189	KNOB M8 H26	1	12		
4.507.1385	ADJUSTING PIN	1	13		
4.507.1076	SPRING	1	14		
4.507.1478	SQUEEGEE SUPPORT	1	15		
3.006.0076	SQUEEGEE WHEEL (D.50)	1	16		X
4.507.0854	BRACKET FOR SQUEEGEE LIFT CABLE	1	17		
5.513.0299	SQUEEGEE SUPPORT PIN	1	18		



LISTA RICAMBI**CODICE:** 8.527.0012 **REV.:** 3 **DESCRIZIONE:** KFL50BBCTR**DATA INIZIO VAL.:** 03/31/2014 **DATA FINE VAL.:** 01/01/3000**CODICE GRUPPO:** R55092084 **REV.:** 3 **DESCRIZIONE:** TANK COMPONENTS**DATA INIZIO VAL.:** 03/31/2014 **DATA FINE VAL.:** 01/01/3000 **N. TAVOLA:** E8527F003/03

CODICE:	DESCRIZIONE:	QTA':	POS:	ORD	EXTR.
5.511.1657	TANK COVER ASSEMBLY	1	01		
4.508.0766	MT. 8 1/4 CONNECTION H.P. HOSE AIRFOAM GASKET	1	02	X	
4.508.0768	CIRCULAR AIRFOAM GASKET	1	03	X	
4.508.0770	RUBBER FILTER SWIFT B/E	1	04		
5.511.1656	FLOAT ASSEMBLY	1	05		
5.511.0703	BATTERY CONNECTION CABLE ASSEM BLY	1	06		
4.507.0635	BRACKET FOR ANDERSON PLUG	1	07		
3.099.0343	HOSE HOLDER D. 40	1	08		
5.513.0134	LEVER SUPPORT	1	09		
5.513.0133	BRUSH PLATE LIFTING ASSEMBLY	1	10		
5.513.0132	SQG LIFTING LEVER ASSEMBLY	1	11		
4.508.0971	HANDLE SPECIAL LEVEL (15X4)	2	12		
3.099.1329	SQUEGEE LIFT CABLE	1	13		X
3.099.0881	CABLE D.2,5x133 L=685	1	14		X
5.509.0629	SUCTION HOSE ASSEMBLY	1	15		X
5.511.1655	EXHAUST PIPE ASSEMBLY	1	16		X
3.752.0167	AIR PIPE D.51 LENGHT 300mm	1	17		
5.511.1251	SUCTION MOTOR ASSEMBLY	1	18		X
4.506.0142	PULLEY FORK	1	19		
5.511.0937	TANK DRAIN CAP ASSY	1	20		X
4.508.0866	WHEEL SUPPORT - SWIF B	2	21		
3.006.0128	REVOLVING WHEEL D.80 OIL-PROOF +SCREW M12X80	2	22		X
3.006.0117	WHEEL D.160 HOLE 98 SHA d=17 - LEFT	1	23		X
3.001.0034	BALL BEARING 6004 2RS (42X20X1 2)	2	24		
5.511.1792	GEARMOTOR ASSEMBLY	1	25		X
4.508.0689	FIXING WHEEL AXLE - SWIFT B	2	26		
3.006.0118	WHEEL D.160 HOLE 98 SHA d=17 - RIGHT	1	27		X
3.099.1066	CAP FOR WHEEL - GREY	2	28		
3.102.0026	WATER FILTER WITHOUT FLOW REGULATOR	1	29		X
4.507.0793	LEVER SUPPORT PLATE - SWIFT B	2	31		
4.508.1064	DETERGENT TANK FILTER FOR SWIFT/FLICK	1	32		
4.508.0739	SPONGE FILTER	1	33	X	
3.099.0307	HANDLE FOR TIE ROD BLACK MODEL MT/58/FFC-M6	1	34		
5.511.0991	BRUSH PLATE LIFTING AXLE ASSEM BLY	1	35		
3.499.0434	BRUSH MOTOR CABLING FREE BM/BT	1	36		
3.099.1249	COMPLETE CONTROL WATER FREE	1	37		X
3.099.0868	BALL VALVE 3/8" F/F WITHOUT HANDLE	1	38		

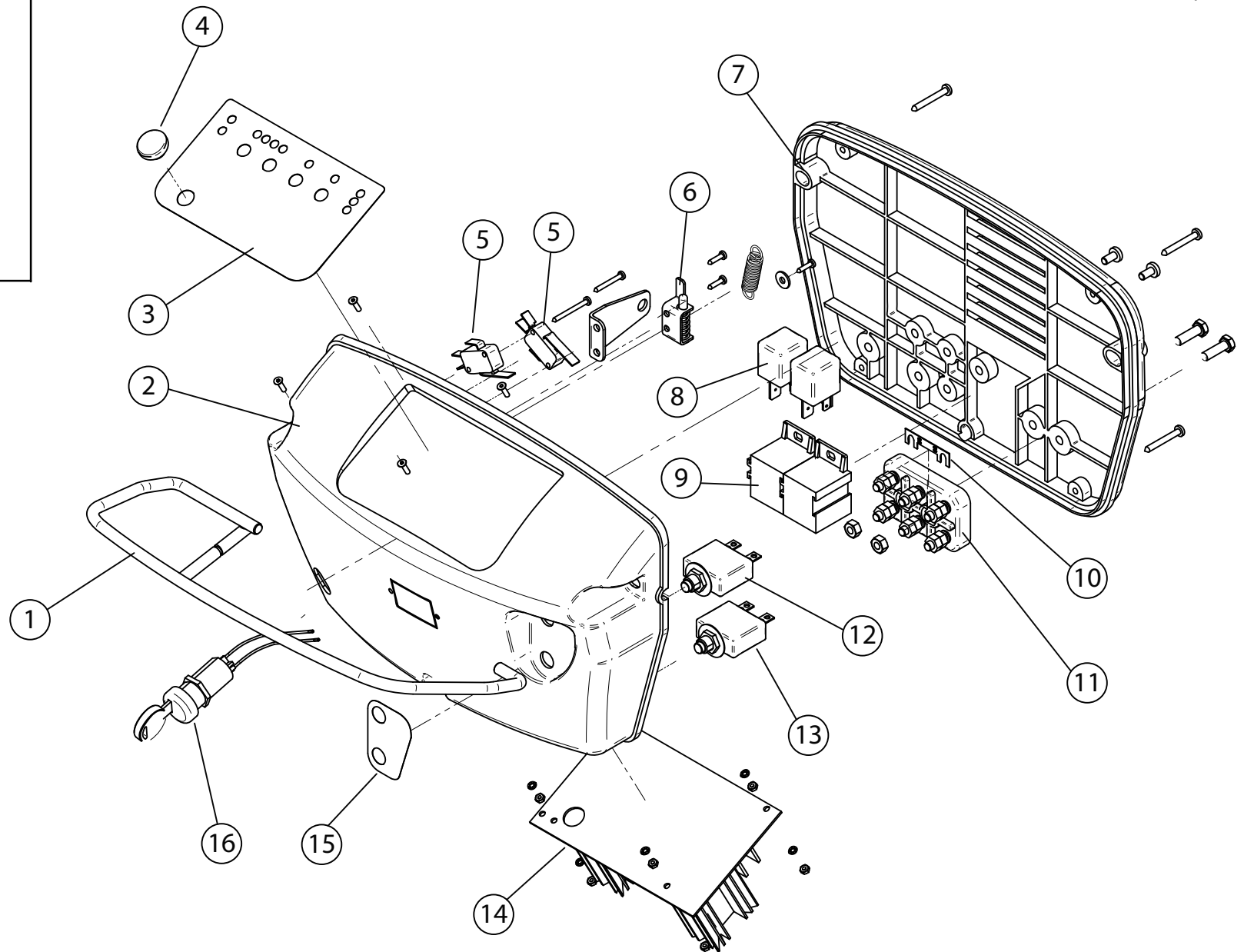
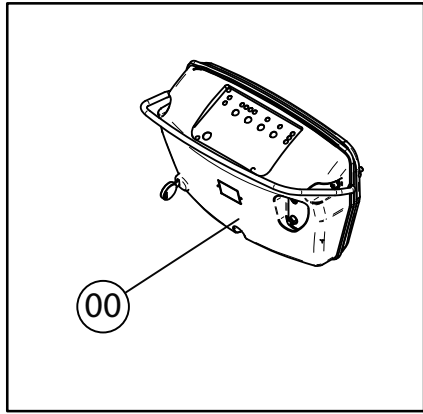
E55092140/01



LISTA RICAMBI**CODICE:** 8.527.0012 **REV.:** 3 **DESCRIZIONE:** KFL50BBCTR**DATA INIZIO VAL.:** 03/31/2014 **DATA FINE VAL.:** 01/01/3000**CODICE GRUPPO:** R55092140 **REV.:** 1 **DESCRIZIONE:** BRUSH PLATE**DATA INIZIO VAL.:** 03/31/2014 **DATA FINE VAL.:** 01/01/3000 **N. TAVOLA:** E55092140/01

CODICE:	DESCRIZIONE:	QTA':	POS:	ORD	EXTR.
3.099.1730	S/S CABLE L=240mm	1	01		X
4.507.1482	BRACKET FOR MOTOR LIFTING CABLE-KFL50BBCTR	1	02		
5.501.0083	MOTOR+GEARBOX 24V DC 550W 150RPM (HY-231)	1	03		X
4.507.1465	BRUSH PLATE LIFTING BAR - KFL50BBCTR	1	04		
4.508.0224	BUMPER WHEEL D.110 GREY	1	05		X
4.507.0308	SUPPORT FOR BUMPER WHEEL	1	06		
4.507.1463	BRUSH PLATE	1	07		
3.099.0865	HOSE ARMONVILLE D.int.=14 L=58 0	1	08		
4.508.1543	BRUSH COVER 50CM	1	09		
4.508.1554	BUMPER FREE EKO	1	10		X
4.507.1470	BUSHING	1	11		
4.507.1469	BUSHING	1	12		
4.507.0300	BRUSH COUPLING	1	13		
5.511.0867	BRUSH COUPLING ASSEMBLY	1	14		
4.508.1192	UNIFIED FLANGE FOR BRUSH COUPLING	1	15		X
5.511.1097	PPL BRUSH 480 MM. W/UNIFIED COUPLING FLANGE	1	16	X	
3.412.0044	SOLENOID VALVE 24V	1	17		X
4.512.0071	CONNECTOR WITH CABLE	1	18		

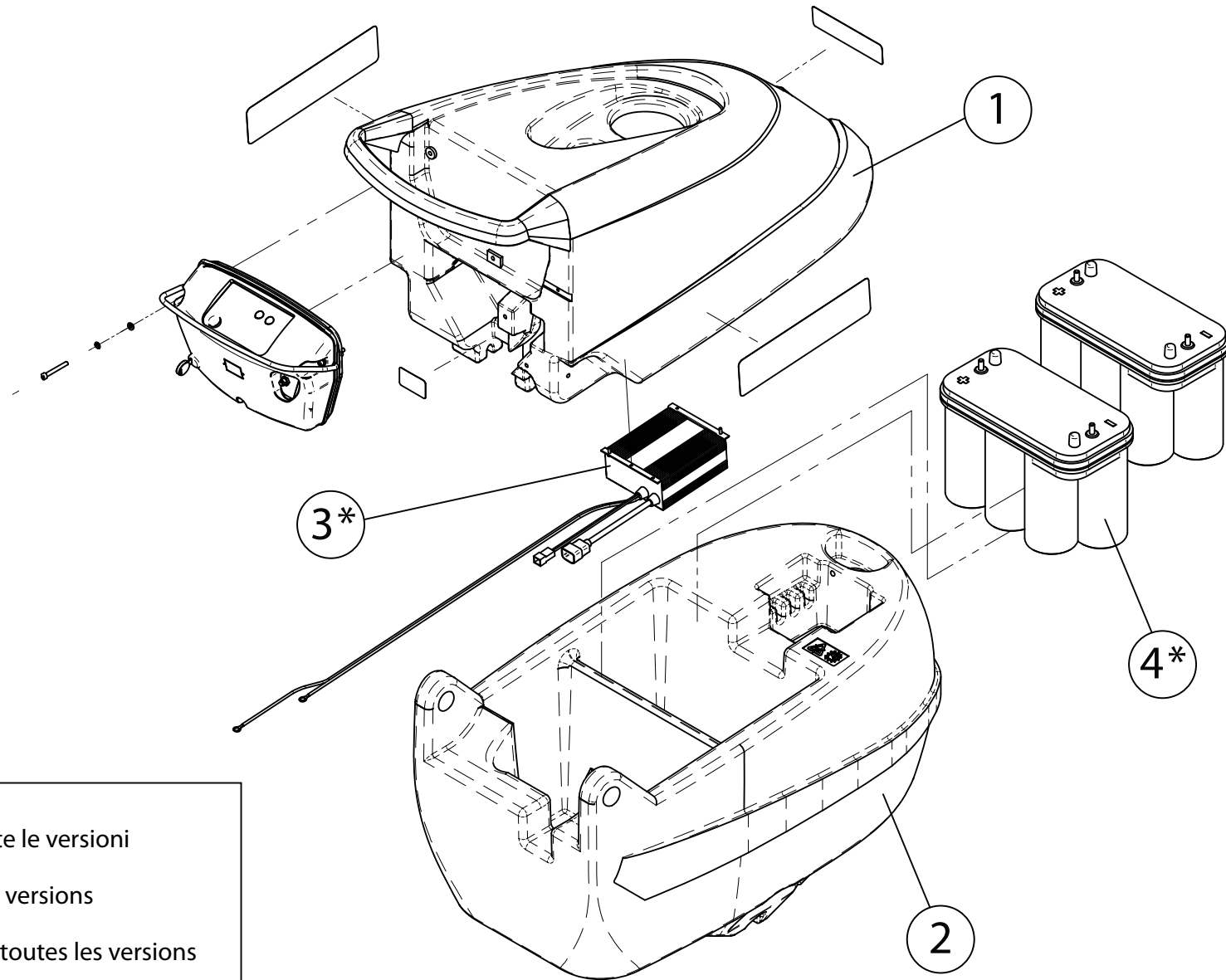
E8527E003/01



LISTA RICAMBI**CODICE:** 8.527.0012 **REV.:** 3 **DESCRIZIONE:** KFL50BBCTR**DATA INIZIO VAL.:** 03/31/2014 **DATA FINE VAL.:** 01/01/3000**CODICE GRUPPO:** R55110986 **REV.:** 1 **DESCRIZIONE:** CONTROLS**DATA INIZIO VAL.:** 03/13/2006 **DATA FINE VAL.:** 01/01/3000 **N. TAVOLA:** E8527E003/01

CODICE:	DESCRIZIONE:	QTA':	POS:	ORD	EXTR.
5.511.0986	ELECTRIC BOX ASSEMBLY	1	00		
4.507.0706	LEVER	1	01		
4.508.0396	ELECTRIC BOX COVER	1	02		
7.503.0085	ADHESIVE LABEL FOR CONTROLS EASY-R BT TYPE	1	03		
3.099.1529	COVER PLUG D. 20	1	04		
3.401.0113	MICROSWITCH SAIA XGO2-88-J24	2	05		X
5.509.0556	CONTROL LEVER ASSEMBLY	1	06		
4.508.0397	ELECTRIC BOX SUPPORT	1	07		
3.402.0017	RELAY AUTOMOTIVE CB1AH-24V 70A	2	08		X
3.410.0022	RELAY SUPPORT FOR CB1AH	2	09		
3.499.0135	STRIP FUZE 60A	1	10		X
3.405.0045	TERMINAL BOARD MEC584 70-45	1	11		
3.401.0075	THERMAL CIRCUIT BREAKER 35A SM 7350	1	12		X
3.401.0073	THERMAL CIRCUIT BREAKER 12A SM 7120	1	13		X
4.515.0001	CONTROL BOARD 24V	1	14		X
7.503.0086	ADHESIVE LABEL (TRACT.&BRUSH)	1	15		
3.499.0406	IGNITION KEY FOR ELECTRONIC DASHBOARD CARD	1	16		X

E8527A001/01



- * = Non incluso in tutte le versioni
- * = Not included in all versions
- * = Pas présents dans toutes les versions
- * = No incluido en todas las versiones

LISTA RICAMBI**CODICE:** 8.527.0012 **REV.:** 3 **DESCRIZIONE:** KFL50BBCTR**DATA INIZIO VAL.:** 03/31/2014 **DATA FINE VAL.:** 01/01/3000**CODICE GRUPPO:** R8527AC01 **REV.:** 1 **DESCRIZIONE:** ACCESSORIES/COMPONENTS - B-BT/GR**DATA INIZIO VAL.:** 04/24/2012 **DATA FINE VAL.:** 01/01/3000 **N. TAVOLA:** E8527A001/01

CODICE:	DESCRIZIONE:	QTA':	POS:	ORD	EXTR.
4.508.0780	RECOVERY TANK - LIGHT GREY	1	01		
4.508.0477	SOLUTION TANK SWIFT B - GREY	1	02		
0.108.0042	BATTERY CHARGER CBHD1 24V 10A IU1a-Gel	1	03		X
0.107.0054	BATTERY 12V 75AH YTS 5.5	2	04		X



KRÜGER TECHNOLOGY S.L.
B-82526583
Polígono Agustinos C/G Parcela B2
31013 Pamplona (Navarra) - ESPAÑA
+34 948 343 393 - info@kruger.es - www.kruger.es