



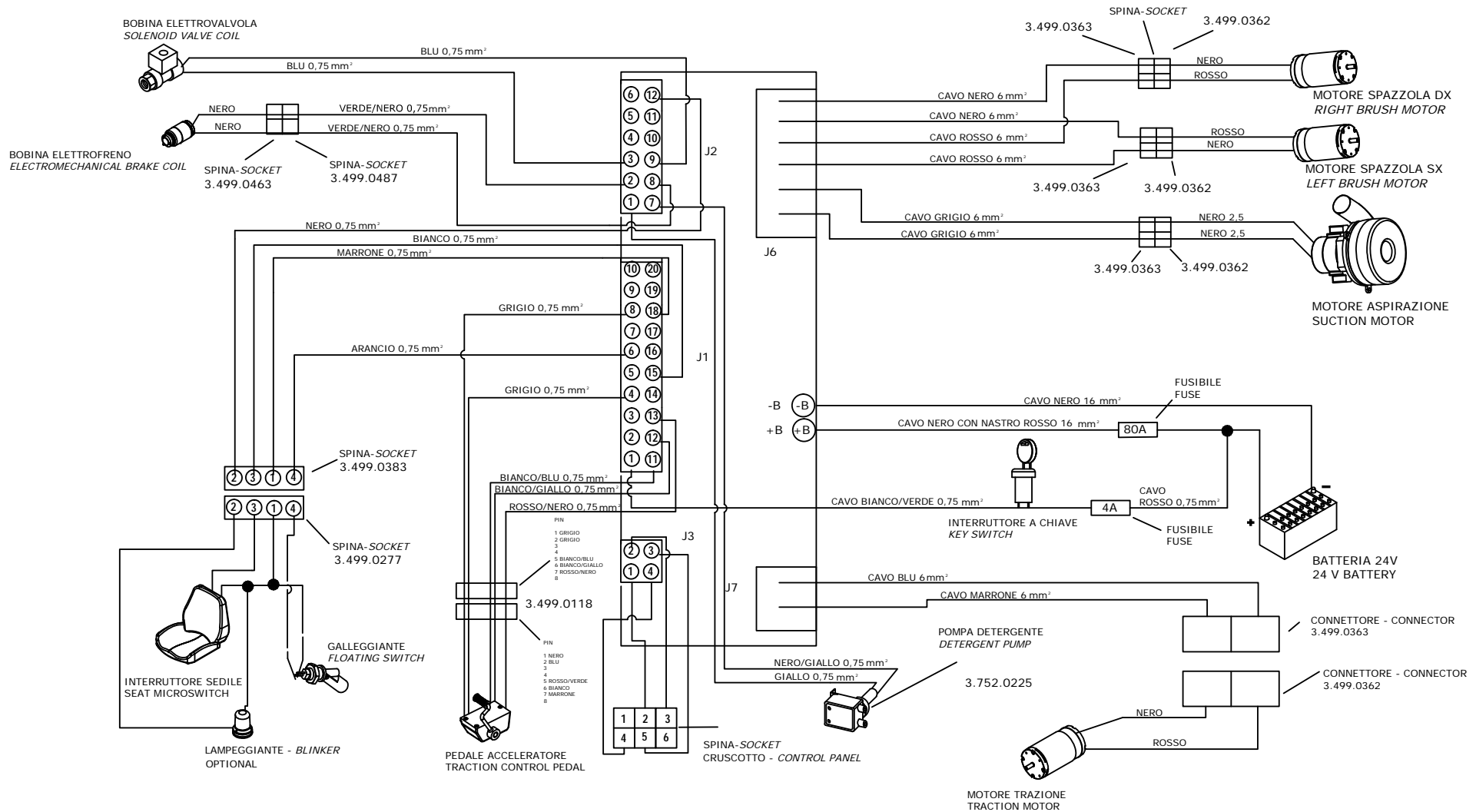
Despiece

CÓDIGO

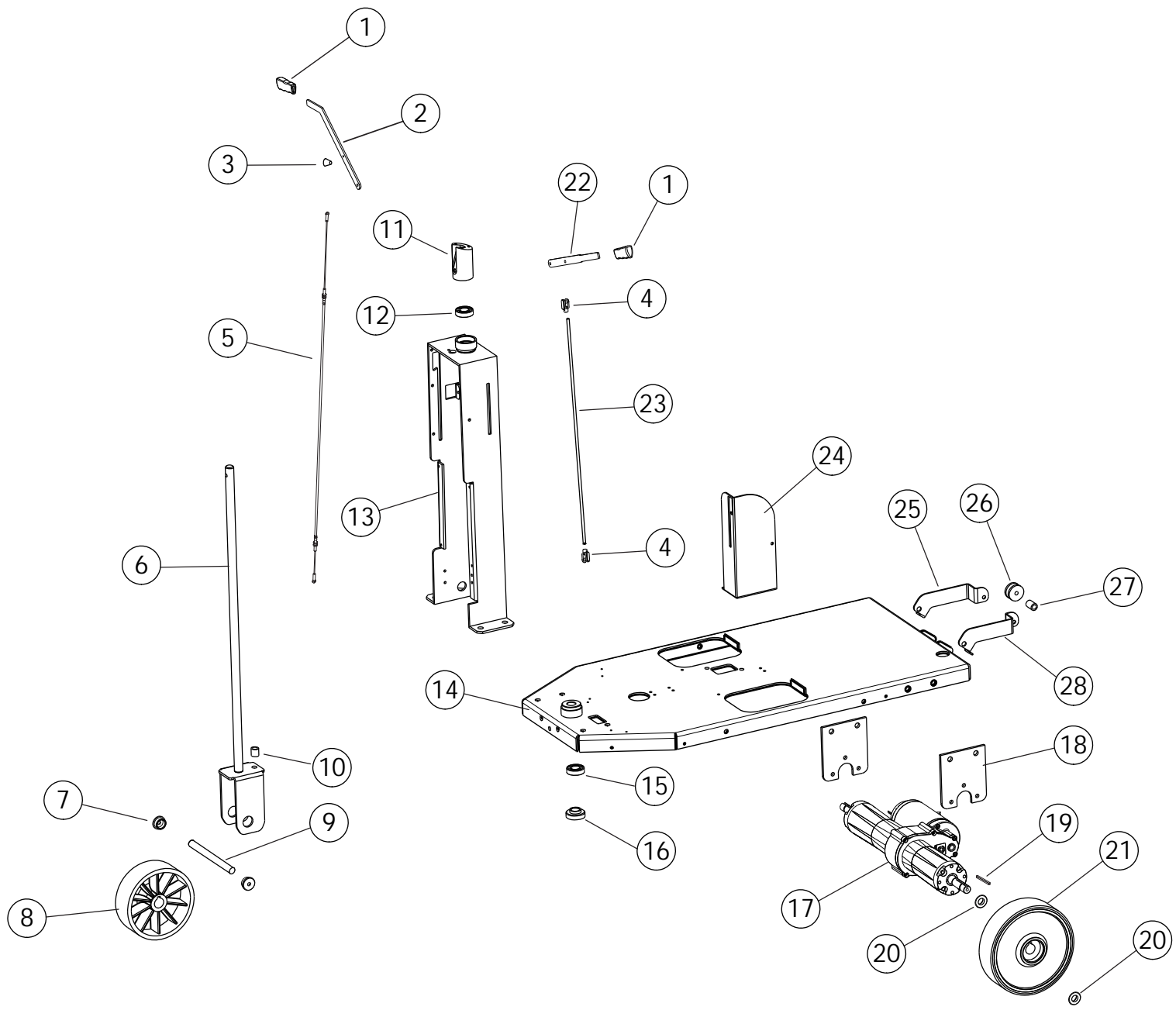
KF675BBC

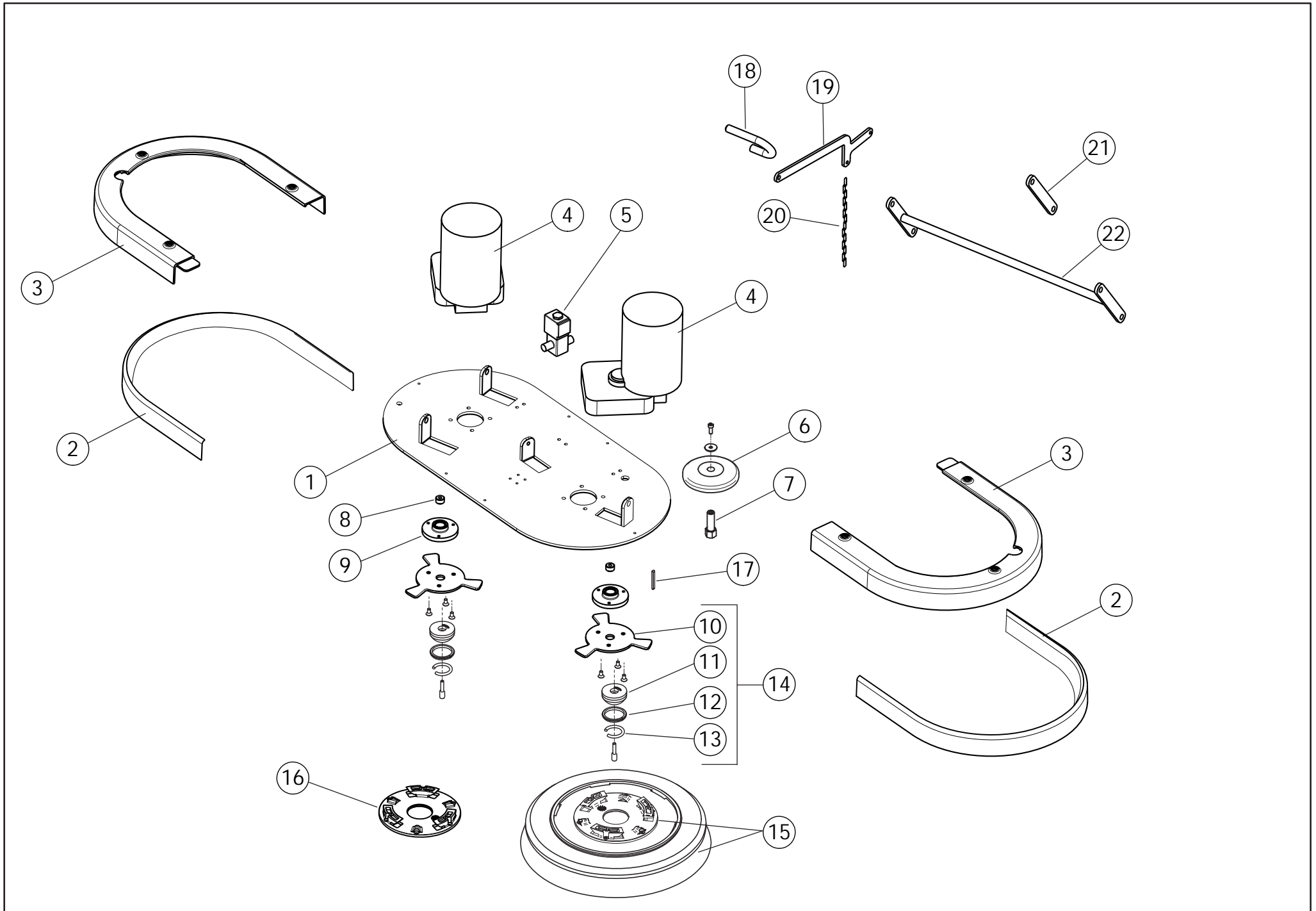
DESCRIPCIÓN

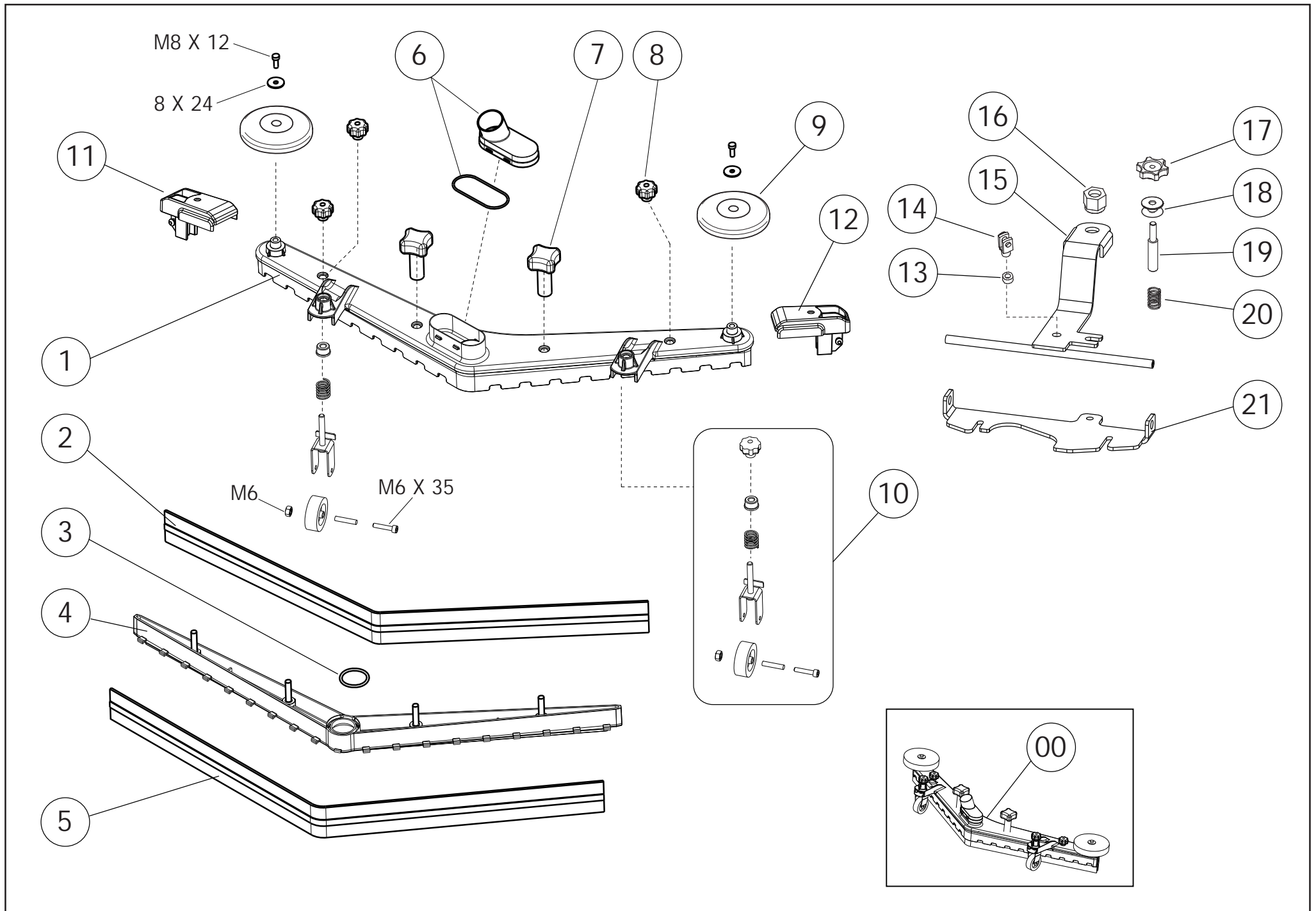
FREGADORA DE HOMBRE A BORDO A BATERÍA

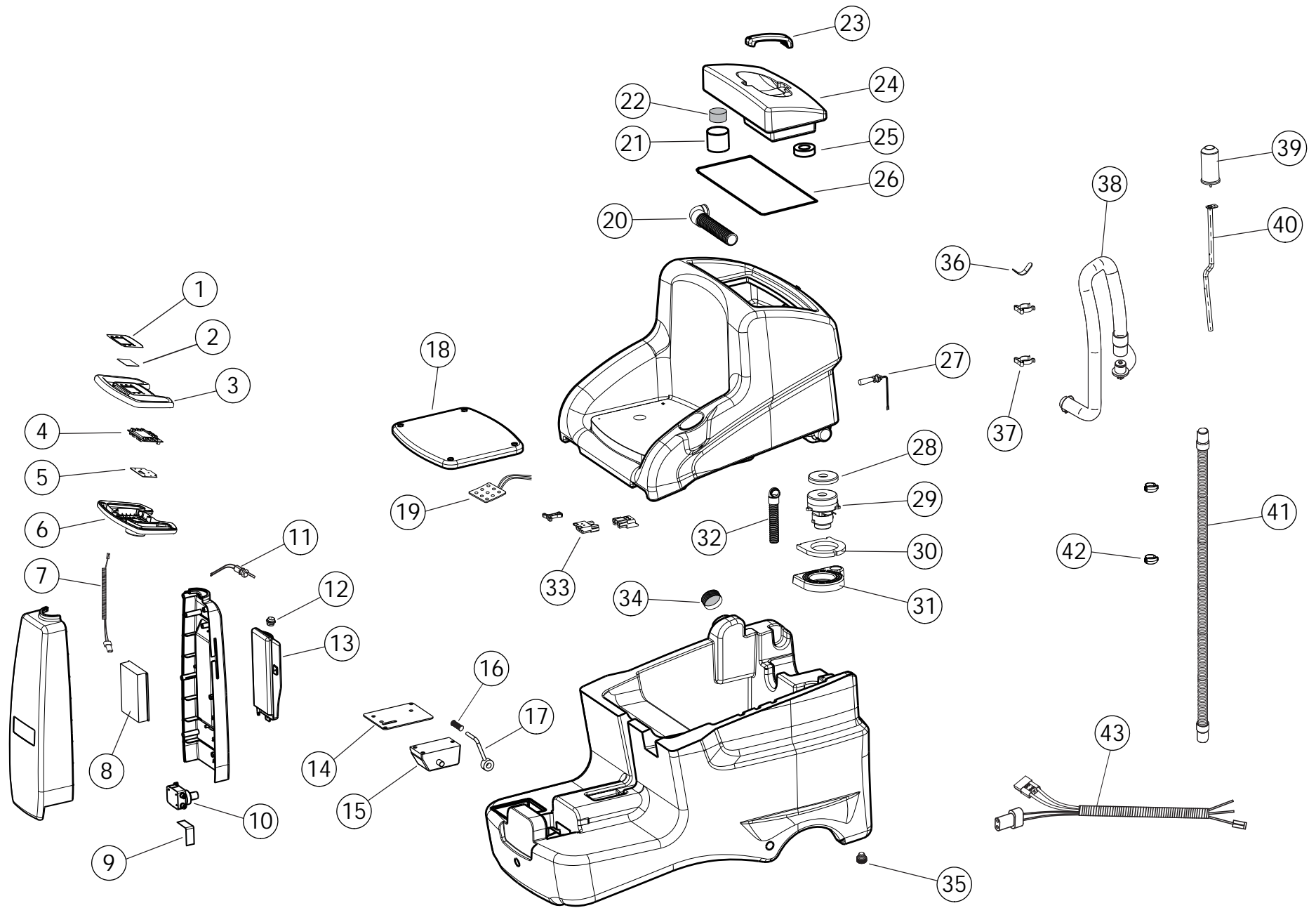


- CAVO = CABLE
 NERO = BLACK
 MARRONE = BROWN
 BIANCO = WHITE
 ARANCIO = ORANGE
 GRIGIO = GREY
 BLU = BLUE
 GIALLO = YELLOW
 ROSSO = RED



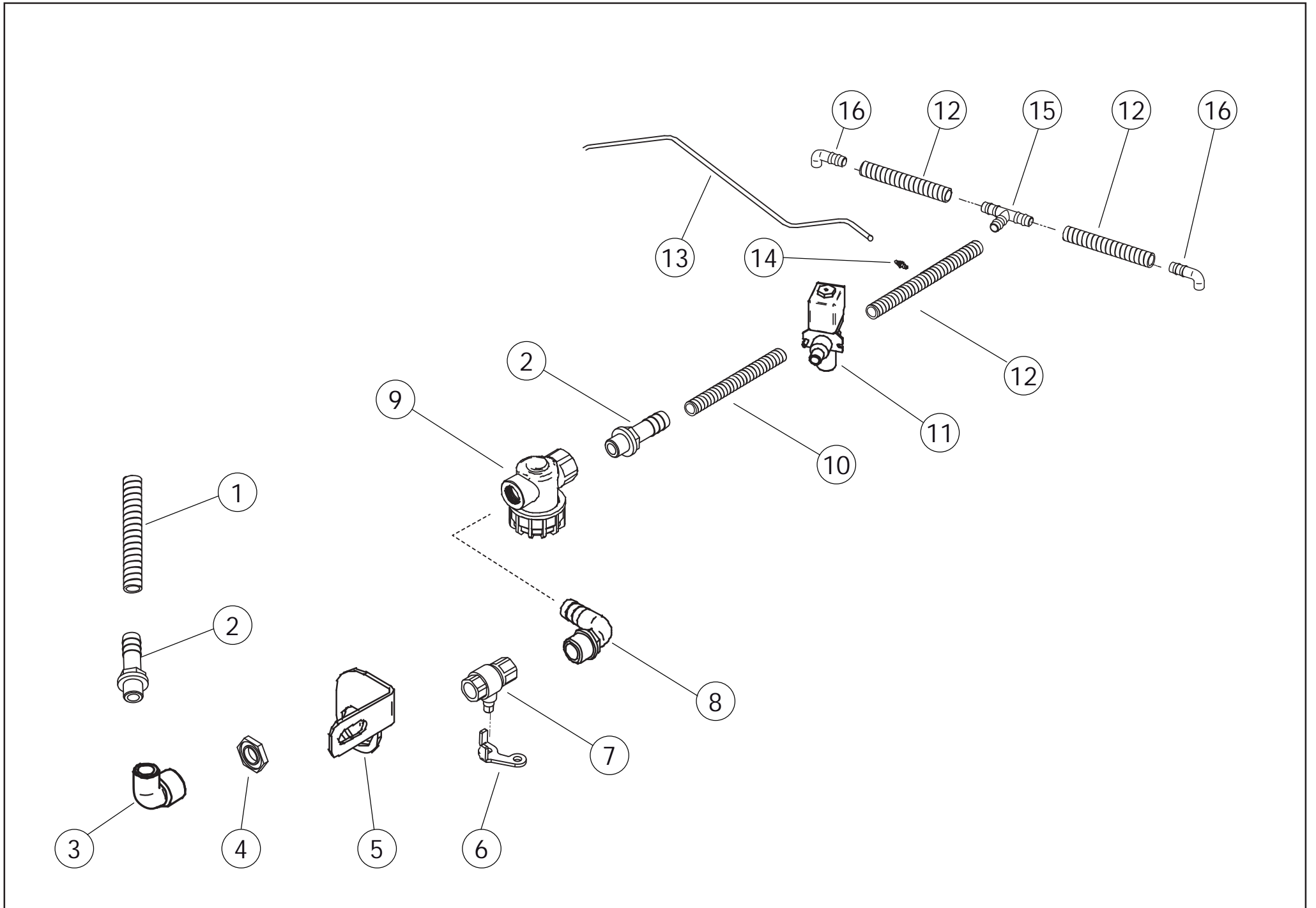


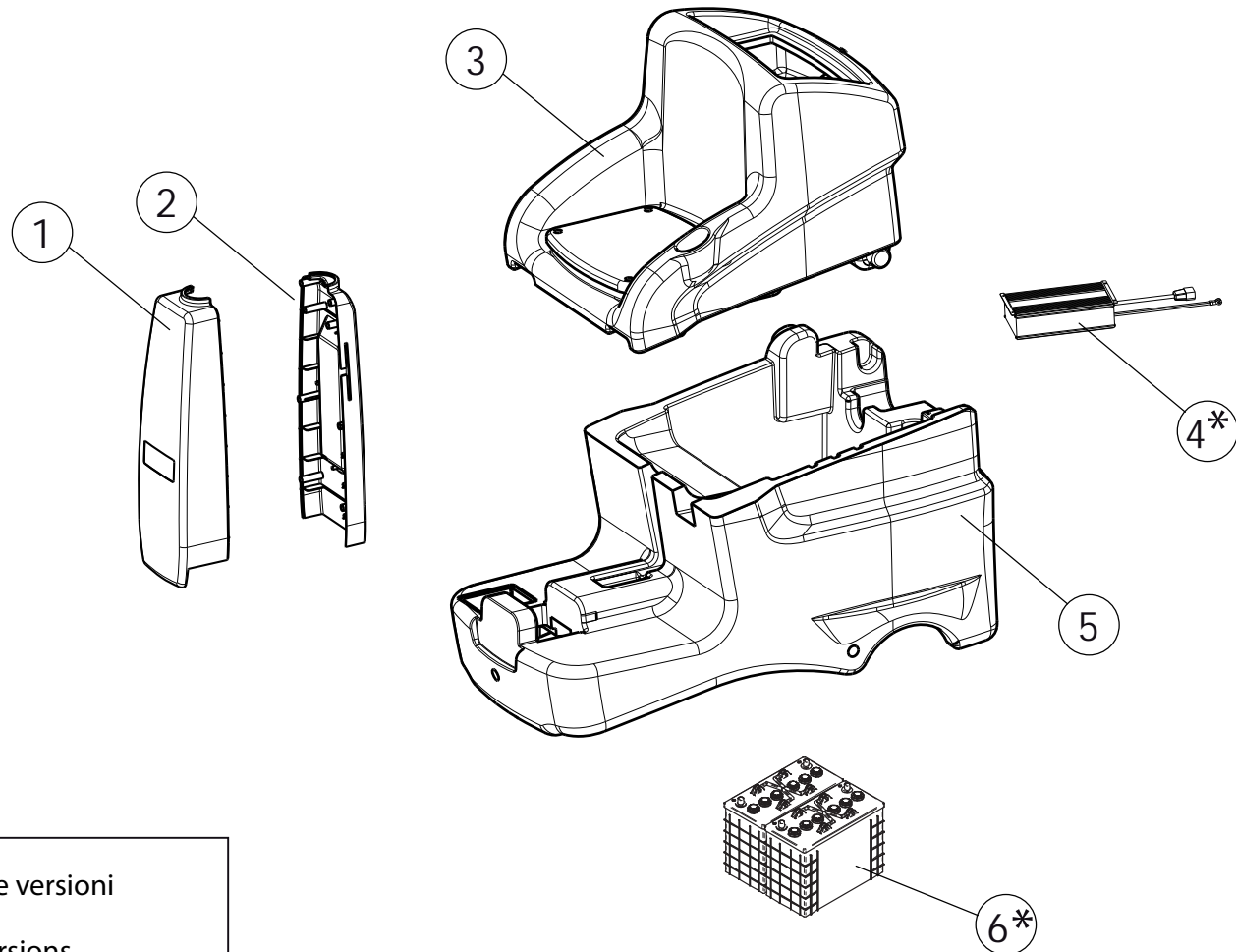




Pos.	Code	Price	Q.ty per	Qty.	Description	Alternative	Price	Q.ty per	Description
001	7.503.1336		1	1	ADHESIVE LABEL FOR SCL XXS CONTROL PANEL		0	0	
002	4.508.1622		6	1	TRANSPARENT PROTECTION FOR DISPLAY		0	0	
003	4.508.1573		2	1	UPPER COVER FOR COMFORT XXS STEERING		0	0	
004	4.515.0006		1	1	FUNCTION KEYBOARD		0	0	
005	4.507.1498		2	1	STEERING BRACKET		0	0	
006	4.508.1574		1	1	LOWER COVER FOR COMFORT XXS STEERING		0	0	
007	3.499.0533		2	1	WIRING STEERING BOARD-MAIN BOARD		0	0	
008	4.515.0005		1	1	CONTROL BOARD 24V		0	0	
009	4.507.1496		1	1	PUMP BRACKET		0	0	
010	3.752.0225		1	1	DETERGENT PUMP 24V		0	0	
011	3.401.0071		1	1	KEY SWITCH		0	0	
012	4.608.0027		2	1	BLACK PLUG D.30 FOR TANK		0	0	
013	4.508.1581		1	1	SOLUTION TANK XXS P58.0542		0	0	
014	4.508.1639		3	1	PLASTIC BRACKET FOR ACCELERATOR PEDAL		0	0	
015	3.403.0163		1	1	RUDDER PEDALS WITHOUT PEDAL		0	0	
016	4.508.0822		3	1	LEVER HANDLE		0	0	
017	4.507.1514		1	1	ACCELERATOR LEVER		0	0	
018	4.508.0825		1	1	SEAT		0	0	
019	3.499.0173		1	1	MICROSWICH FOR SEAT KRON ZERO		0	0	
020	3.752.0258		1	1	UNLOADER HOSE FOR RECOVERY TANK		0	0	
021	4.507.1521		1	1	FILTER SUPPORT G3/4		0	0	
022	4.508.0768		2	1	CIRCULAR AIRFOAM GASKET		0	0	
023	4.208.0628		6	1	HANDLE -GREY-		0	0	
024	4.508.1568		1	1	RECOVERY TANK COVER XXS P58.0542		0	0	
025	4.508.1627		3	1	SPONGE FOR RECOVERY TANK CAP		0	0	
026	4.508.1638		1	1	GASKET FOR VACUUM CAP L=1230mm		0	0	
027	3.403.0043		1	1	FLOATING SWITCH	5.511.1228	33.65	1	KIT SPARE PARTS FOR FLOATING
028	4.508.0123		2	1	SUCTION MOTOR GASKET		0	0	
029	3.755.0101		1	1	TWO STAGE SUCTION MOTOR 24V 400W		0	0	
030	4.508.1621		1	1	SPONGE FOR VACUUM MOTOR (OUTLET)		0	0	
031	4.508.1572		1	1	SUCTION MOTOR CONVEYOR -BLACK-		0	0	
032	3.752.0257		1	1	UNLOADER HOSE FOR RECOVERY TANK		0	0	
033	3.499.0246		1	1	CONNECTOR 80A - RED		0	0	
034	4.508.1634		1	1	CAP W/GASKET FOR WATER TANK		0	0	

COMPONENTES DEL TANQUE





* = Non incluso in tutte le versioni
* = Not included in all versions
* = Pas présents dans toutes les versions
* = No incluido en todas las versiones

ÍNDICE ALFANUMÉRICO EN TABLAS DEL LISTADO DE COMPONENTES

Code	Exploded View	Pos.	Qty
0.107.0063	R85790006-1	006	2
0.108.0054	R85790006-1	004	1
3.001.0034	R55092121-1	015	1
3.006.0157	R55092121-1	008	1
3.006.0158	R55092121-1	021	2
3.099.0323	R55092121-1	019	2
3.099.0333	R55092126-1	007	1
3.099.0336	R55092126-1	012	0.15
3.099.0337	R55092121-1	004	2
	R55092123-1	014	1
3.099.0467	R55092123-1	008	4
3.099.0870	R55092122-1	017	2
3.099.0910	R55092122-1	020	1
3.099.1189	R55092123-1	017	1
3.099.1265	R55092123-1	007	2
3.099.1313	R55092126-1	013	0.6
3.099.1553	R55092124-1	037	2
3.099.1773	R55092121-1	005	1
3.100.0074	R55092126-1	003	1
3.100.0113	R55092126-1	015	1
3.100.0357	R55092126-1	008	1
3.100.0388	R55092126-1	014	1
3.200.0127	R55092122-1	013	2
3.200.0168	R55092123-1	003	1
3.401.0071	R55092124-1	011	1
3.403.0043	R55092124-1	027	1
3.403.0163	R55092124-1	015	1
3.412.0044	R55092122-1	005	1
	R55092126-1	011	1
3.499.0173	R55092124-1	019	1
3.499.0246	R55092124-1	033	1
3.499.0532	R55092124-1	043	1
3.499.0533	R55092124-1	007	1
3.499.0536	R55092124-1	039	1

Code	Exploded View	Pos.	Qty
3.749.0299	R55092126-1	009	1
3.752.0225	R55092124-1	010	1
3.752.0230	R55092124-1	038	1
3.752.0257	R55092124-1	032	1
3.752.0258	R55092124-1	020	1
3.755.0101	R55092124-1	029	1
4.208.0510	R55092124-1	042	2
4.208.0628	R55092124-1	023	1
4.505.0866	R55092123-1	001	1
4.505.0869	R55092121-1	011	1
4.506.0024	R55092126-1	004	1
4.506.0218	R55092121-1	027	1
4.506.0260	R55092121-1	003	1
4.506.0261	R55092123-1	013	1
4.506.0273	R55092123-1	016	1
4.507.0057	R55092126-1	006	1
4.507.0300	R55092122-1	010	2
4.507.0308	R55092122-1	007	1
4.507.0761	R55092124-1	036	1
4.507.1071	R55092123-1	018	1
4.507.1072	R55092123-1	019	1
4.507.1076	R55092123-1	020	1
4.507.1469	R55092122-1	008	2
4.507.1470	R55092122-1	009	2
4.507.1489	R55092121-1	018	2
4.507.1490	R55092123-1	021	1
4.507.1492	R55092123-1	015	1
4.507.1493	R55092121-1	014	1
4.507.1495	R55092122-1	001	1
4.507.1496	R55092124-1	009	1
4.507.1497	R55092122-1	021	1
4.507.1498	R55092124-1	005	1
4.507.1499	R55092121-1	002	1
4.507.1500	R55092121-1	013	1

Code	Exploded View	Pos.	Qty
4.507.1501	R55092121-1	024	1
4.507.1502	R55092122-1	019	1
4.507.1504	R55092121-1	022	1
4.507.1505	R55092126-1	005	1
4.507.1508	R55092122-1	022	1
4.507.1509	R55092121-1	009	1
4.507.1510	R55092121-1	007	2
4.507.1511	R55092121-1	016	1
4.507.1513	R55092121-1	023	1
4.507.1514	R55092124-1	017	1
4.507.1515	R55092122-1	018	1
4.507.1517	R55092121-1	010	1
4.507.1518	R55092121-1	025	1
4.507.1519	R55092121-1	028	1
4.507.1521	R55092124-1	021	1
4.508.0123	R55092124-1	028	1
4.508.0224	R55092122-1	006	1
4.508.0290	R55092122-1	011	2
4.508.0314	R55092122-1	012	2
4.508.0505	R55092123-1	004	1
4.508.0768	R55092124-1	022	1
4.508.0822	R55092124-1	016	1
4.508.0825	R55092124-1	018	1
4.508.0971	R55092121-1	001	2
4.508.1090	R55092121-1	020	4
4.508.1192	R55092122-1	016	2
4.508.1245	R55092126-1	016	2
4.508.1568	R55092124-1	024	1
4.508.1569	R85790006-1	005	1
4.508.1570	R85790006-1	001	1
4.508.1571	R85790006-1	002	1
4.508.1572	R55092124-1	031	1
4.508.1573	R55092124-1	003	1
4.508.1574	R55092124-1	006	1

