



DESPIECE TÉCNICO

FREGADORA

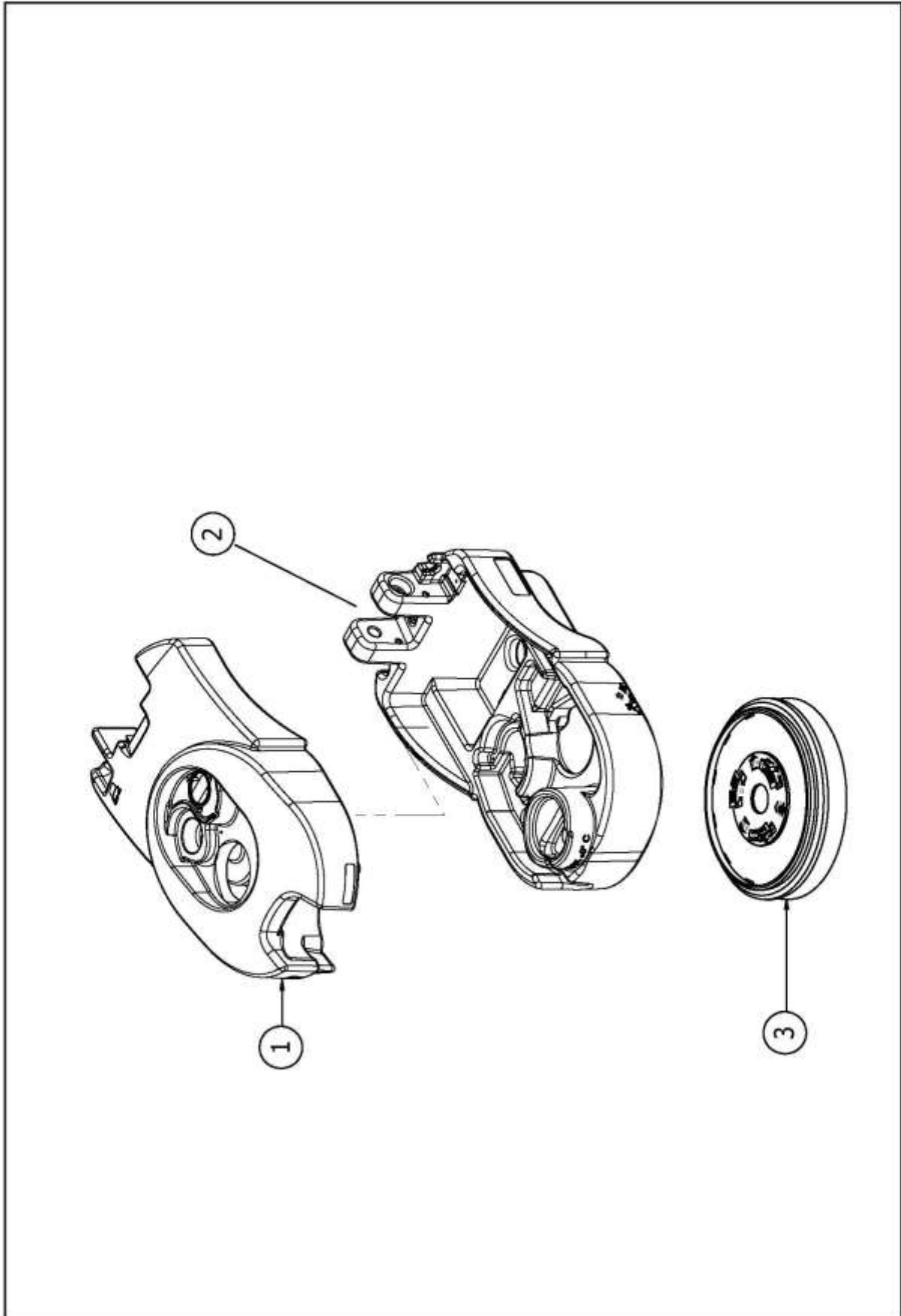
KF36E



Despiece KF36E

Articolo: **8.518.0014** **KF36E**
Tavola: **D85180002/01** Inizio Validità **24/11/2015** Fine Validità:

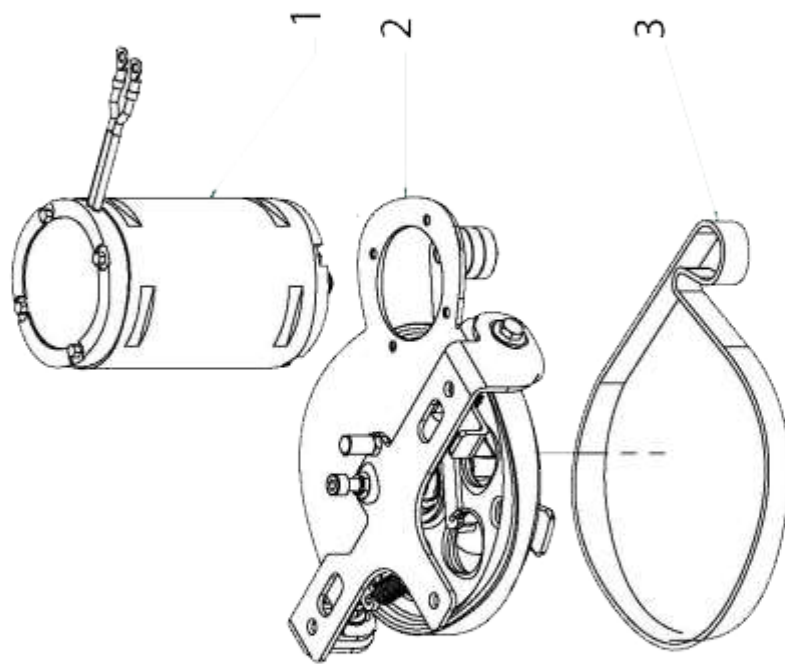
Componente	Descrizione	Pos.	Tipo Man.
4.508.1036	DIRTY WATER TANK	1	
4.508.1042	SOLUTION WATER TANK	2	
5.511.1411	DISC BRUSH PP D.360 VERTICAL B BRISTLES 0,3MM	3	O



Despiece KF36E

Articolo: **5.509.1451** **GRUPPO PIATTO FLICK / QUICK ELETTRICA**
Tavola: **D55090050/01** Inizio Validità **24/11/2015** Fine Validità:

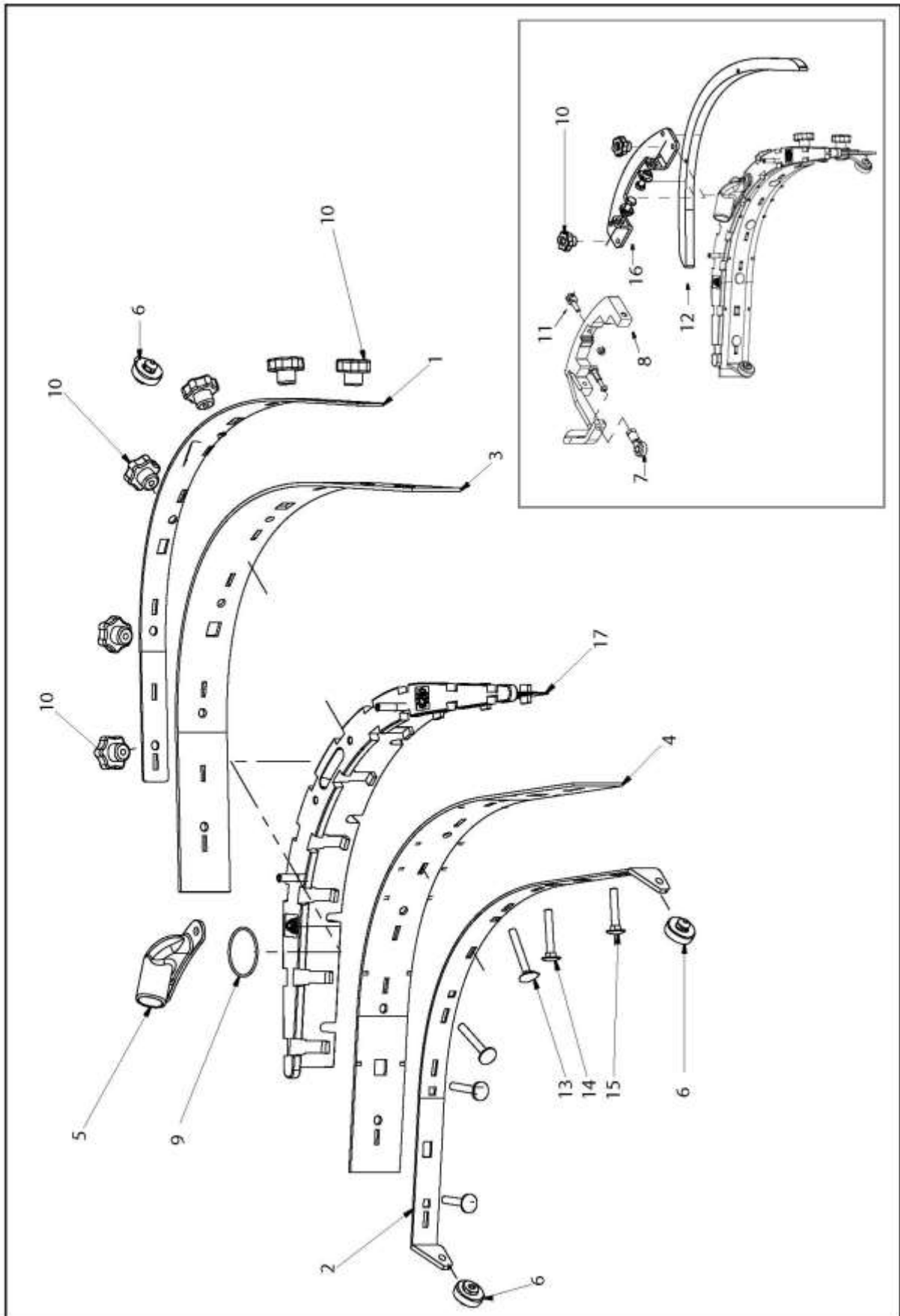
Componente	Descrizione	Pos.	Tipo Man.
5.501.0062	BRUSH MOTOR	1	S
5.511.1386	BRUSH PLATE COMPLETE	2	
3.099.1394	BRUSH BELD	3	S



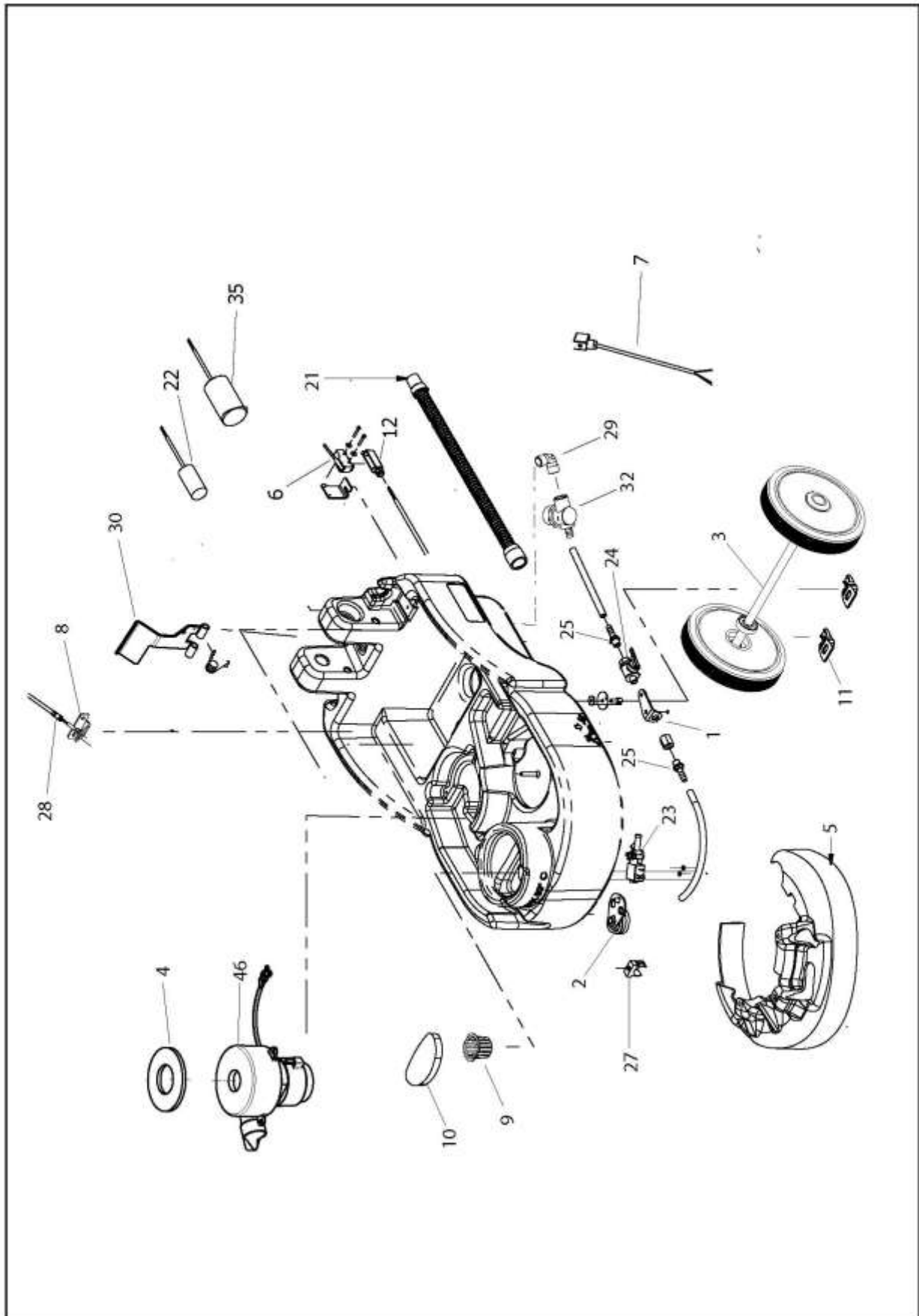
Despiece KF36E

Articolo: **5.509.2172** **GRUPPO SQUEEGEE FLICK / QUICK '16**
Tavola: **D55090034/01** Inizio Validità **11/11/2015** Fine Validità:

Componente	Descrizione	Pos.	Tipo Man.
5.513.0313	REAR SQUEEGEE BLADE HOLDER PLATE QUICK	1	
4.507.1554	BLADE HOLDER - FRONT QUICK	2	
4.508.1101	REAR SQUEEGEE BLADE (NATURAL RUBBER)	3	O
4.508.1100	FRONT SQUEEGEE BLADE (NATURAL RUBBER)	4	O
4.508.1039	VACCUM RACCORD	5	
4.508.1102	SQG. WHEEL D.35 QUICK	6	
3.099.1226	SPHERE CONNECTION	7	
5.513.0245	SWINGING SQUEEGEE SUPPORT	8	
3.200.0212	O-RING	9	
3.099.0477	KNOB M6 (THREADED PASS-THROUGH HOLE)	10	
4.507.1273	LIFT SQUEEGEE CABLE FORK	11	
4.507.1245	SQUEEGEE SUPPORT	12	
3.002.0822	SCREW M6 X 45	13	
3.002.0820	SCREW M6 X 35	15	
4.507.1130	SQUEEGEE BALLAST	16	
5.511.1884	SQUEEGEE ASSEMBLY	17	

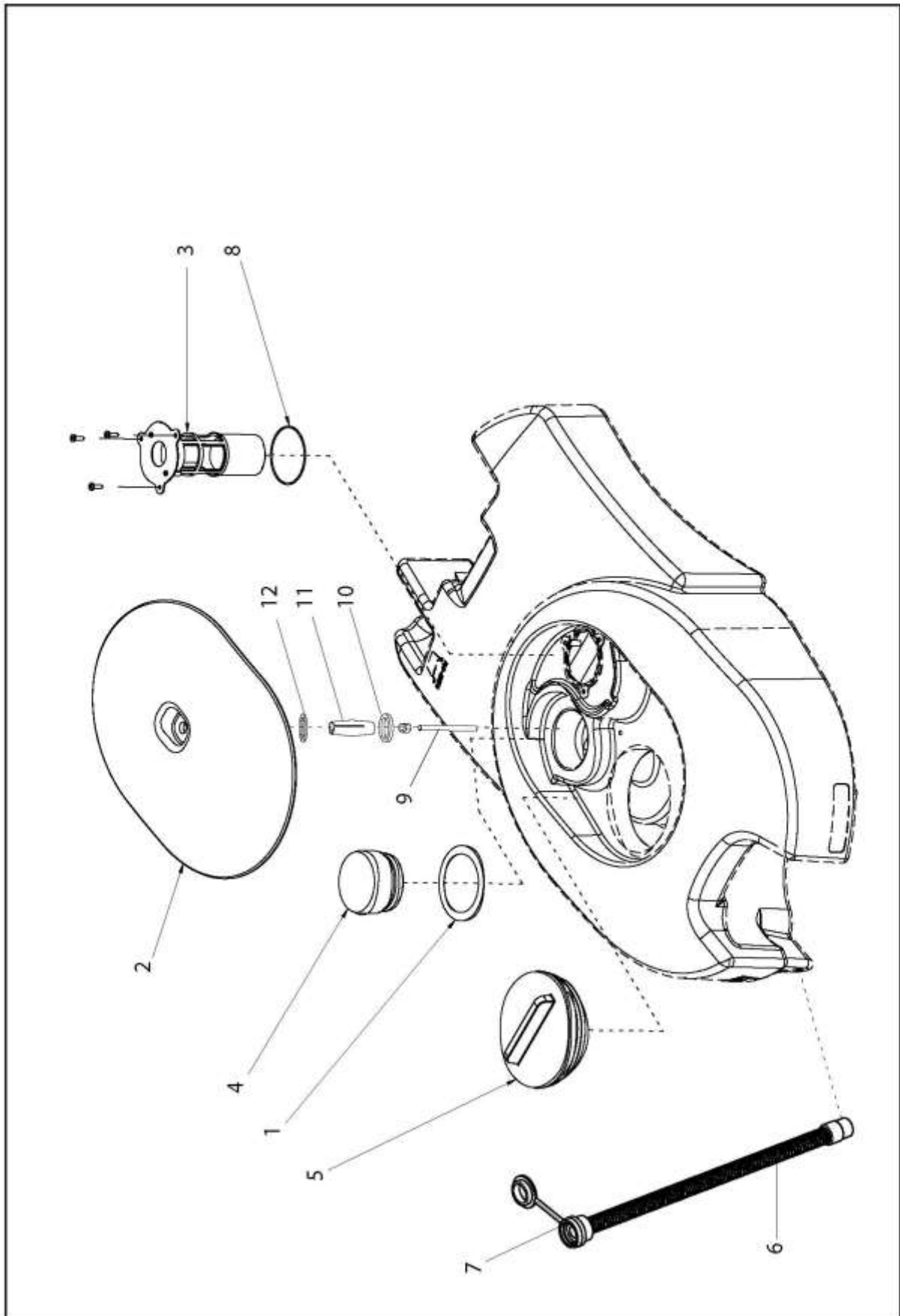


Articolo:	5.509.1445	GRUPPO SOLUZIONE FLICK/QUICK ELETTRICHE		
Tavola:	D55090052/01	Inizio Validità	24/11/2015	Fine Validità:
Componente	Descrizione	Pos.	Tipo Man.	
4.507.1123	WATER VALVE SUPPORT	1		
5.511.1407	BUMPER WHEEL SUPPORT COMPLETE	2		
5.511.1397	WHEEL SHAFT ASSEMBLY	3		
4.513.0375	BRUSH CARTER	5		
3.401.0175	MICROSWITCH	6	S	
3.499.0395	SOLENOID VALVE WIRING	7		
4.507.1251	SQUEEGEE LIFT CABLE SUPPORT	8		
4.508.1064	DETERGENT TANK FILTER FOR SWIFT/FLICK	9	O	
4.508.0739	SPONGE FILTER	10		
4.508.0689	FIXING WHEEL AXLE - SWIFT B	11		
3.401.0176	CONNECTION PROTECTION	12	S	
3.752.0190	VAC HOSE	21	S	
3.404.0077	CAPACITOR 12,5mF 425V	22	S	
3.412.0029	SOLENOID VALVE	23	S	
3.105.0012	VALVE	24		
3.100.0340	HOSE FITTING UNION G1/4 D10	25		
3.099.1409	CLIPS	27		
3.099.1459	SQUEEGEE LIFT CABLE COMPLETE	28	S	
3.100.0357	ELBOW 1/2"M 1/2"M	29		
5.513.0230	HANDLE LOCK PEDAL	30	S	
3.102.0020	WATER FILTER 1/2G D.13	32	O	
3.404.0076	CAPACITOR 040mF 220/240V D.50X120	35	S	
3.755.0078	VACCUM MOTOR 220-240V 50/60Hz 330W	46	S	



Despiece KF36E**Articolo: 5.509.1447 GRUPPO RECUPERO FLICK/QUICK****Tavola: D55090032/01 Inizio Validità 11/11/2015 Fine Validità:**

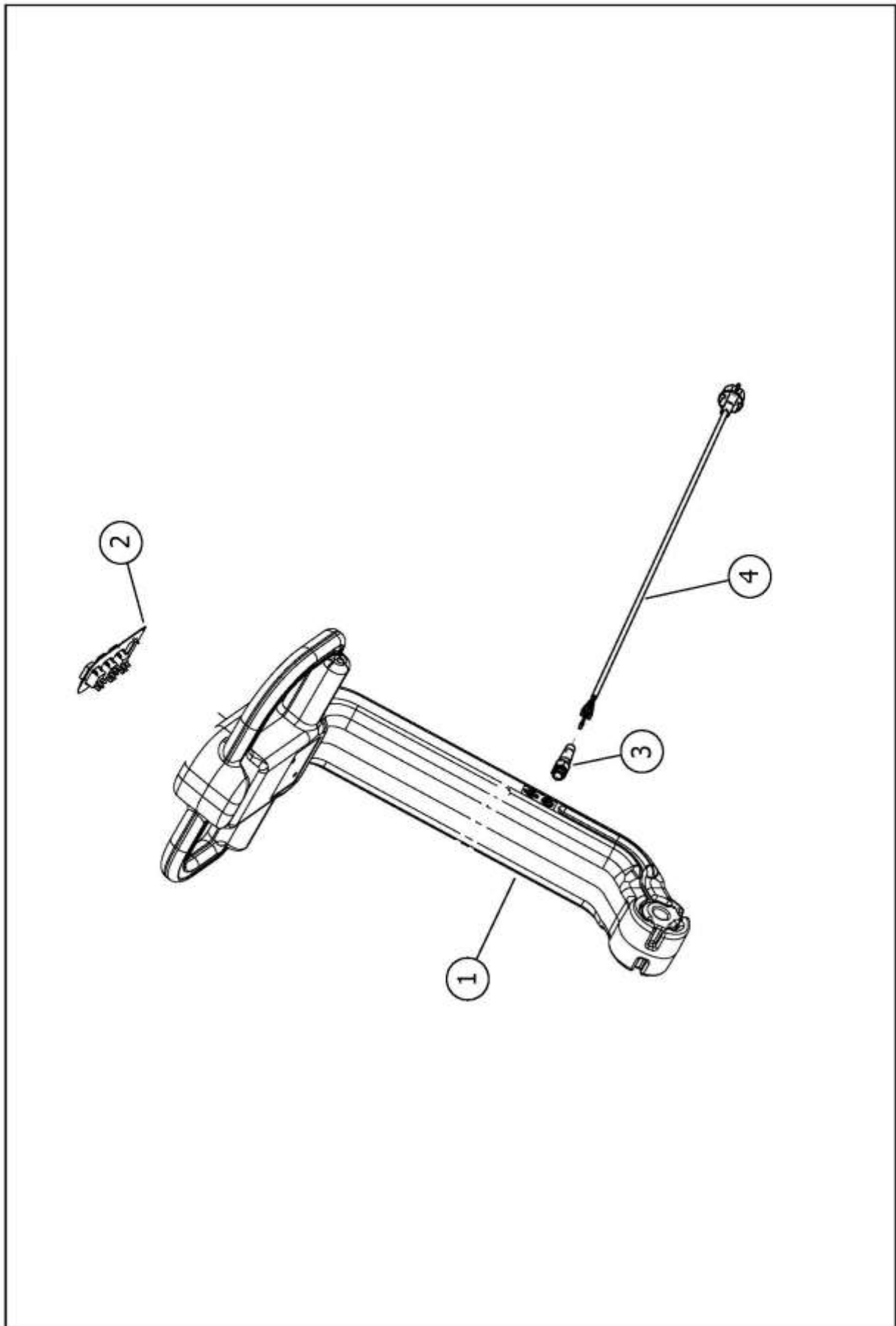
Componente	Descrizione	Pos.	Tipo Man.
7.503.0376	STICKER FOR SUCTION MOTOR COMP ARTMENT	1	
5.511.1400	VACCUM COVER ASSEMBLY	2	
5.511.1401	FLOAT ASSEMBLY	3	
5.511.1511	KIT FILTRE	4	O
5.511.0203	RECOVERY TANK CAP ASSEMBLY	5	
3.752.0256	EXHAUST PIPE	6	S
4.208.0274	DIAM.32mm CAP	7	S
3.200.0077	OR GASKET 64,39X1,78 NBR SH70	8	
4.507.0813	THREADED BAR M6X60	9	
4.507.1487	SPACER FOR COVER	10	
4.508.0565	INSERT	11	
4.508.1610	RING FOR COVER	12	S



Despiece KF36E

Articolo: **5.509.1449** **GRUPPO MANICO COMANDI FLICK/ QUICK ELETTRICA**
Tavola: **D55090051/01** Inizio Validità: **24/11/2015** Fine Validità:

Componente	Descrizione	Pos.	Tipo Man.
5.511.1404	HANDLE ASSEMBLY	1	
3.499.0398	DASHBOARD COMPLETE WITH WIRING	2	
3.406.0040	CABLE TERMINAL PG.11	3	
3.499.0394	MAIN POWER CABLE L=1 MT WITH SCHUKO PLUG	4	S

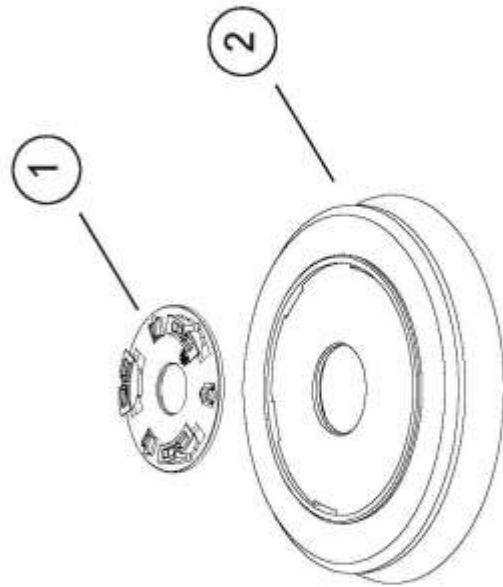


Despiece KF36E

Articolo: **5.511.1411** **ASSIEME SPAZZOLA PP D.360 SPESSORE 0.3 SETOLE VERTICALI**

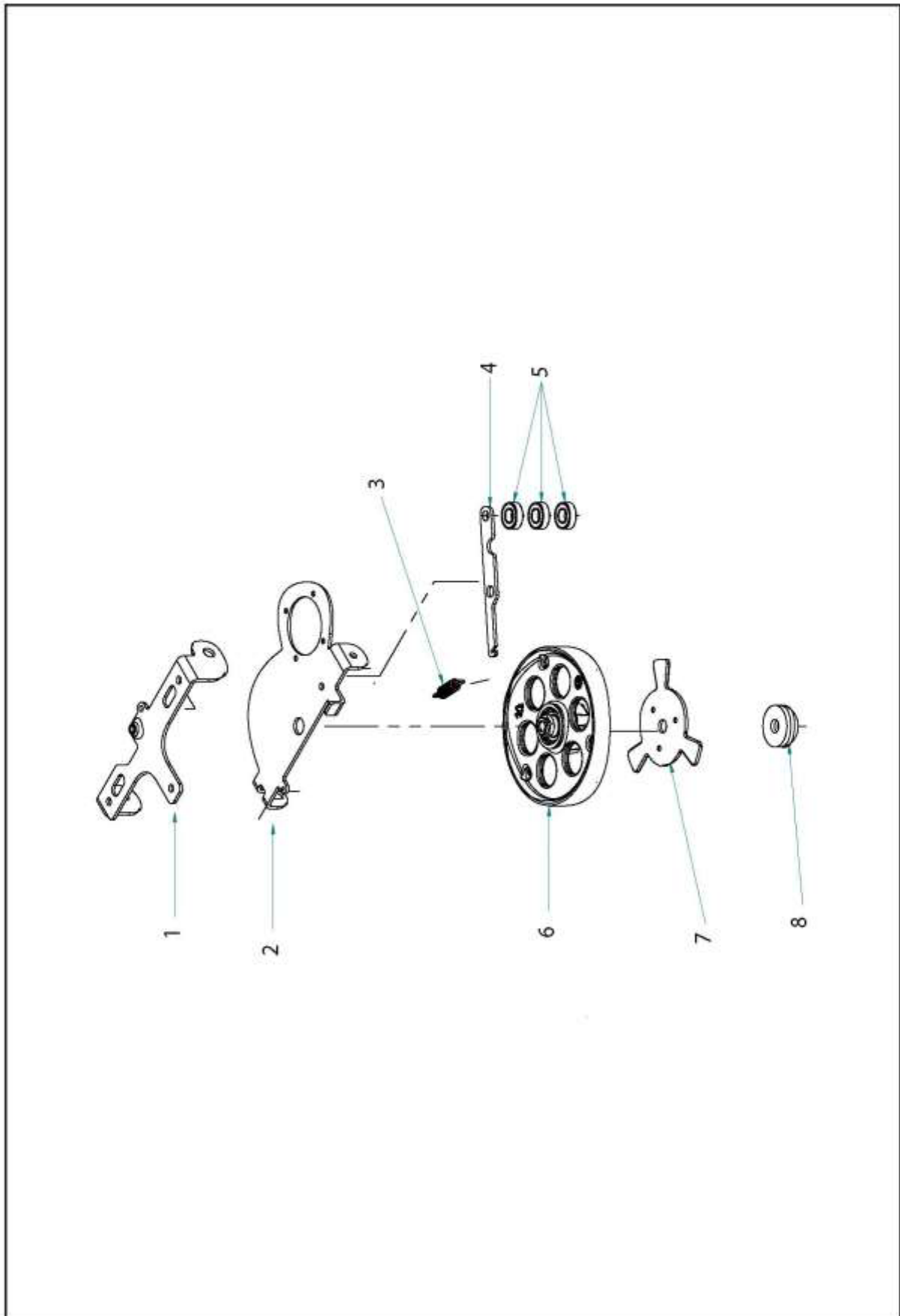
Tavola: **D55110033/01** Inizio Validità **16/11/2015** Fine Validità:

Componente	Descrizione	Pos.	Tipo Man.
4.508.1192	UNIFIED FLANGE FOR BRUSH COUPLING	1	S
3.602.0061		2	



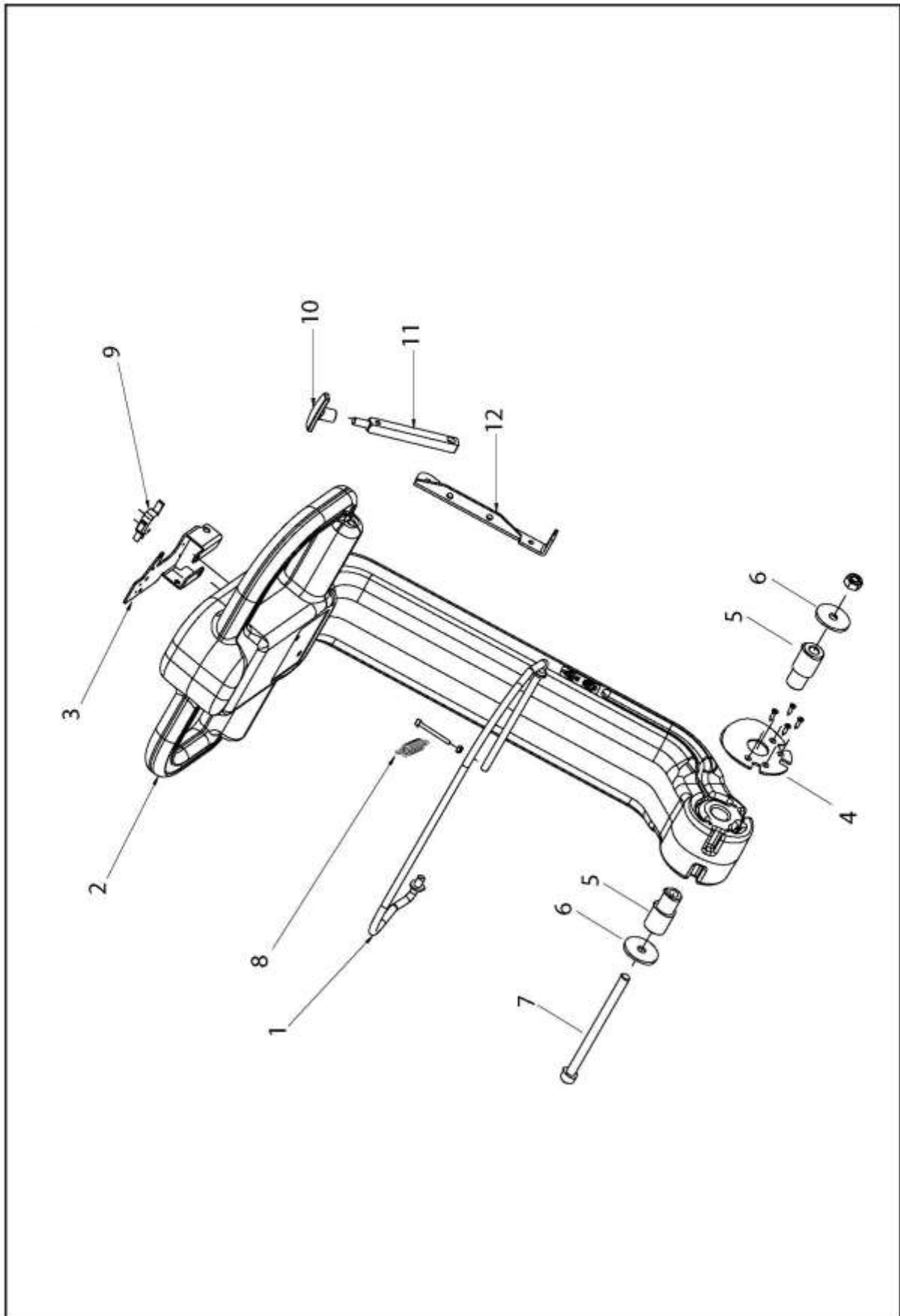
Despiece KF36EArticolo: **5.511.1386** **ASSIEME PIATTO**Tavola: **D55110049/01** Inizio Validità **24/11/2015** Fine Validità:

Componente	Descrizione	Pos.	Tipo Man.
5.513.0244	BRUSH PLATE SUPPORT	1	
4.507.1125	SWINGING SUPPORT	2	
4.507.1272	SPRING	3	
4.507.1124	BELD LEVER	4	
3.001.0032	BEARING 6002 2RS1	5	
5.511.1385	PULLEY ASSEMBLY	6	
4.507.0300	BRUSH COUPLING	7	
4.508.0290	BRUSH COUPLING CENTERING BUSHI NG	8	



Despiece KF36EArticolo: **5.511.1404** **ASSIEME MANICO COMANDO**Tavola: **D55110038/01** Inizio Validità **11/11/2015** Fine Validità:

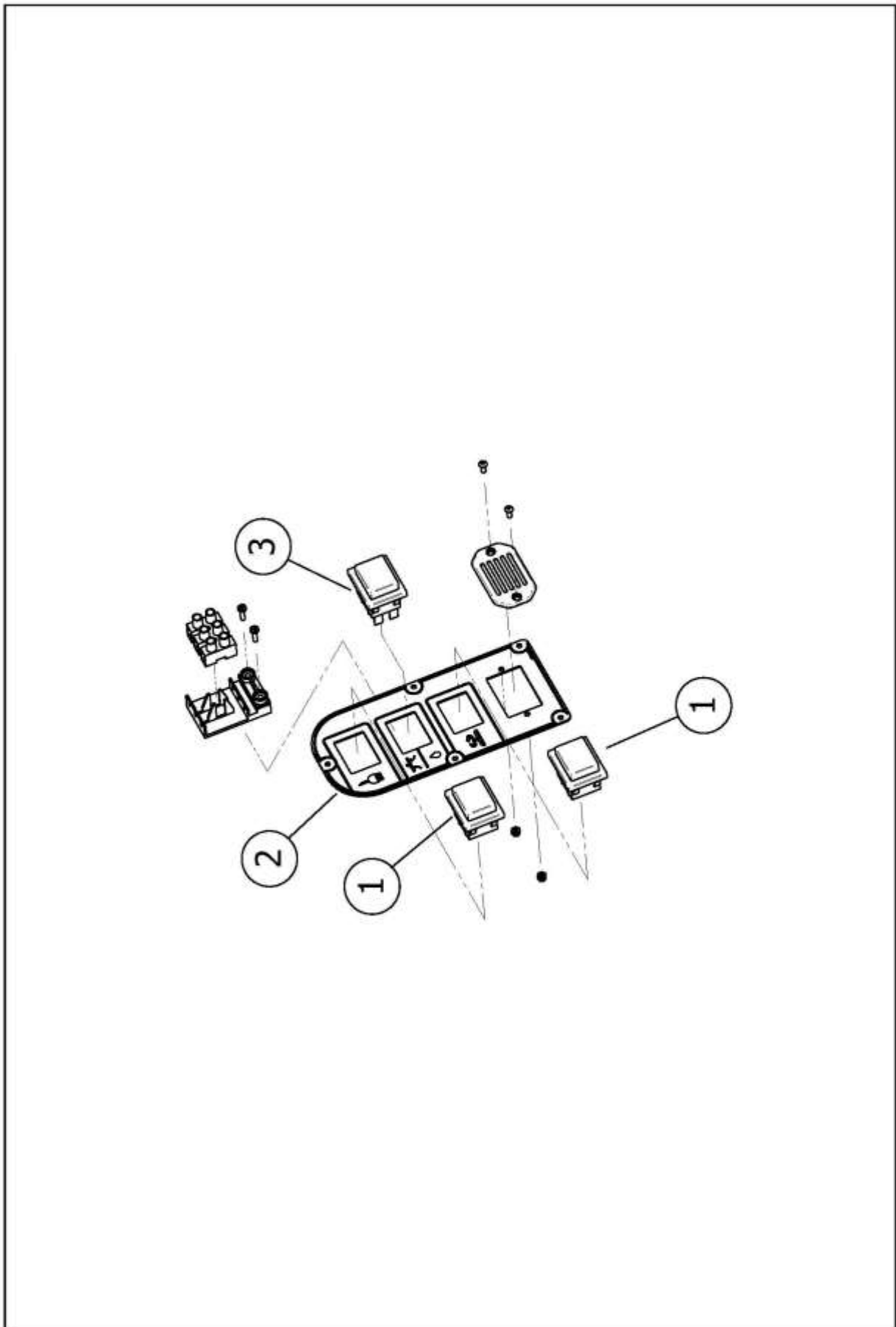
Componente	Descrizione	Pos.	Tipo Man.
5.513.0239	COMAND LEVER	1	
4.508.1035	HANDLE	2	
4.507.1248	MICROSWITCH INSIDE SUPPORT	3	
4.507.1269	STOP BUSH	4	
4.508.1026	HANDLE FIXING WASHER	5	
3.004.0105	PLAIN WASHER D.10X40X2.5 INOX UNI6593	6	
3.002.0819	SCREW 10 X 150	7	
4.507.0522	SPRING	8	
3.401.0157	MICROSWITCH WITH LEVER 20A 250 V	9	S
3.099.1338	TIE ROD	10	
4.507.1119	COMAND LEVER	11	
4.507.1247	SQUEEGEE LEVER SUPPORT	12	



Despiece KF36E

Articolo: **3.499.0398** **ASSIEME CRUSCOTTO CABLATO (FLICK/QUICK)**
Tavola: **D34990002/01** Inizio Validità **24/11/2015** Fine Validità:

Componente	Descrizione	Pos.	Tipo Man.
4.505.0879	DASH BOARD	2	

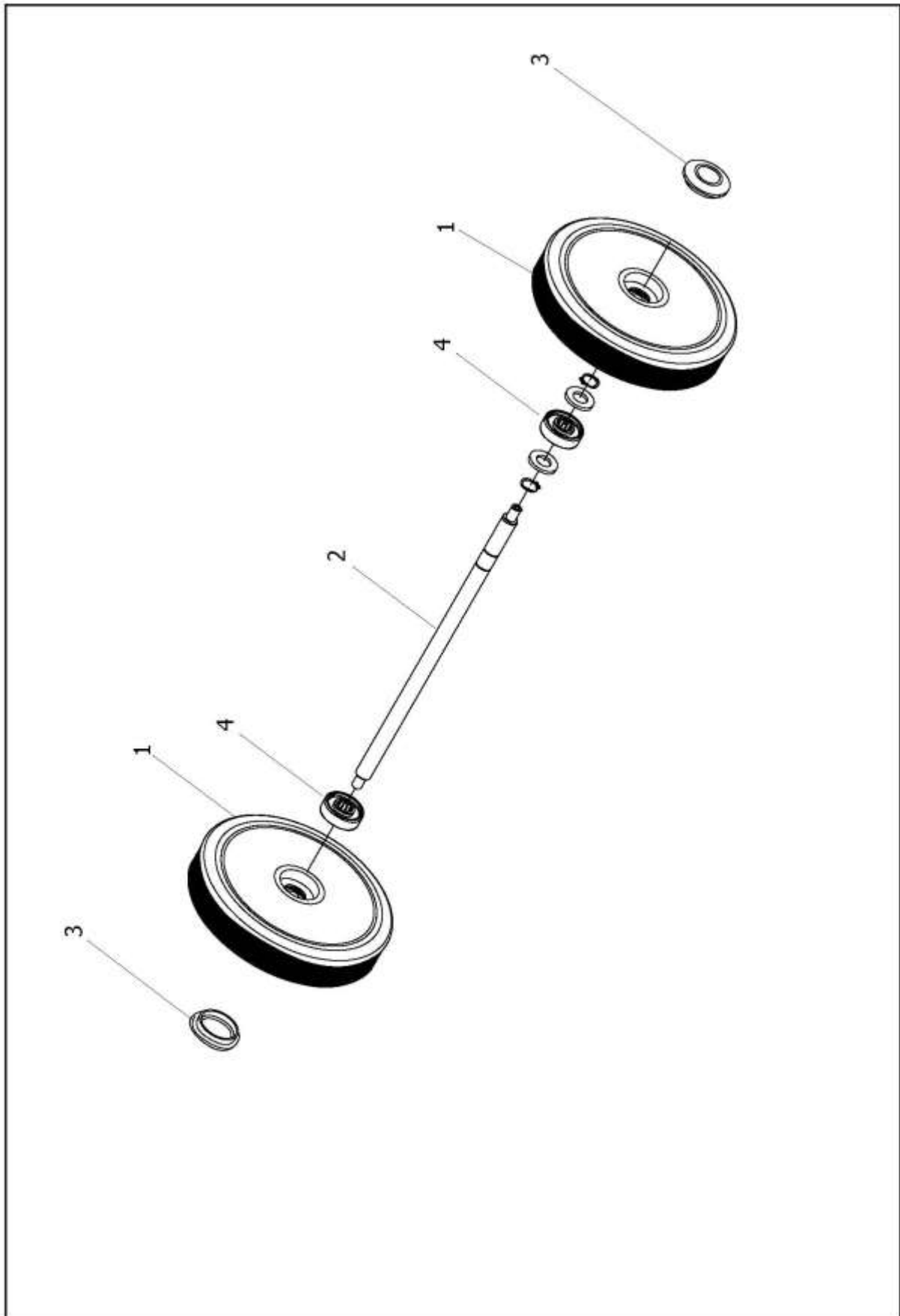


Despiece KF36E

Articolo: **5.511.1397** **ASSIEME ASSE RUOTE**

Tavola: **D55110036/01** Inizio Validità **11/11/2015** Fine Validità:

Componente	Descrizione	Pos.	Tipo Man.
3.006.0127	LOOSE WHEEL D=210 L=42 D10	1	S
4.507.1118	WHEEL SHAFT	2	
3.099.1066	CAP FOR WHEEL - GREY	3	
4.508.0687	AXLE SUPPORT - SWIFT B	4	





KRÜGER TECHNOLOGY S.L.
B-82526583
Polígono Agustinos C/G Parcela B2
31013 Pamplona (Navarra) - ESPAÑA
+34 948 343 393 - info@kruger.es - www.kruger.es